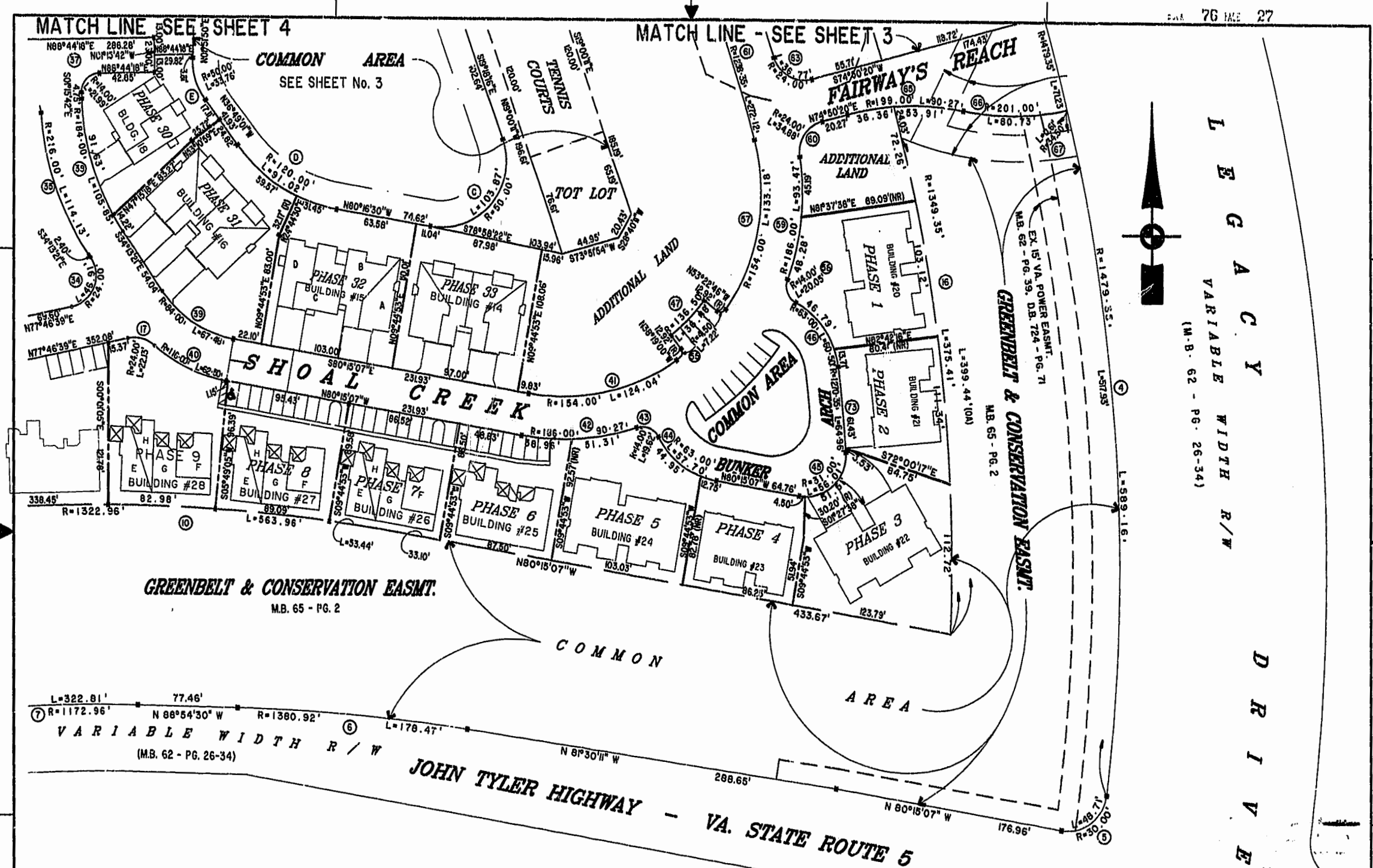


MATCH LINE - SEE SHEET 4

MATCH LINE - SEE SHEET 3

COMMON AREA
SEE SHEET No. 3



LEGACY
VARIABLE WIDTH R/W
(M.B. 62 - PG. 26-34)

GREENBELT & CONSERVATION EASMT.
M.B. 65 - PG. 2

VARIABLE WIDTH R/W
(M.B. 62 - PG. 26-34)

JOHN TYLER HIGHWAY - VA. STATE ROUTE 5

EXHIBIT "A" PHASE 20
FAIRWAYS VILLAS
AT
GREENSPRINGS, A CONDOMINIUM
FOR
GREENSPRINGS DEVELOPMENT, L.C.
BERKELEY DISTRICT JAMES CITY COUNTY, VIRGINIA



PLAN RECORDING BY
P.L. NO. 76000022

11:24 AM
13
RECORDING # 76000022
DATE 01/10/00

Hassell & Folkes, P.C.
Engineers Surveyors Planners
Chesapeake, VA 23320
(757)547-9531

SIZE	CONTRACT NO	DISK/BOX	FILENAME	REV.
C	95-079	60/16	FAIRWAY20.DWG	
SCALE: 1"=80'	DATE: 01/10/00	REF: 18/13	FWAY20.LAT.DWG	
			SHEET 2 of 6	