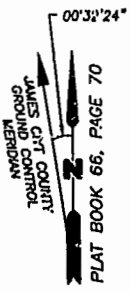


PLAT OF SUBDIVISION  
**WATERFORD**  
 AT  
**POWHATAN SECONDARY**  
 PHASE ELEVEN  
 BERKELEY DISTRICT  
 JAMES CITY COUNTY, VIRGINIA

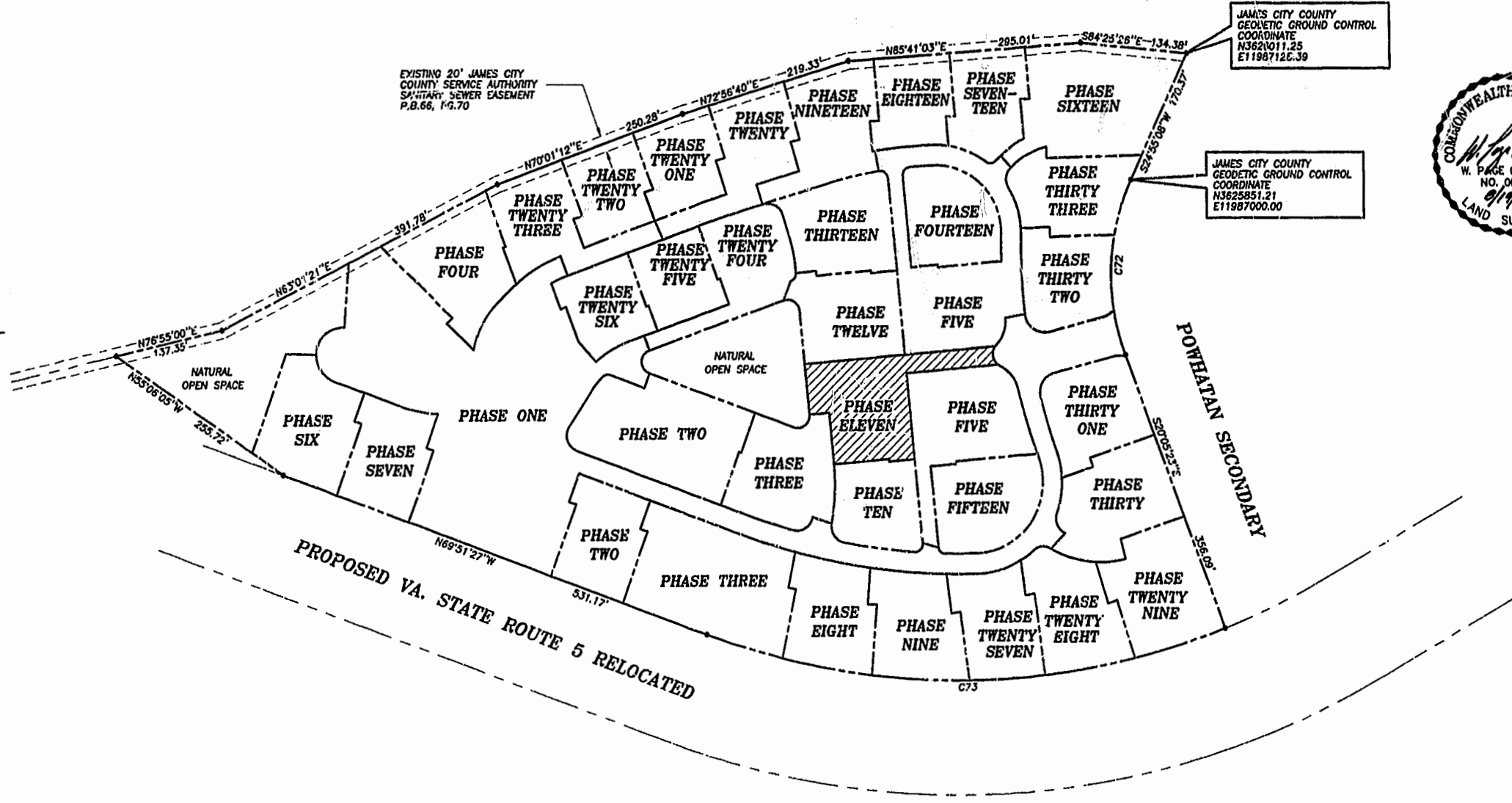
DATE: 10/21/98 SHEET 2 OF 3 SCALE: 1"=100'  
 PROJECT NO: 97-008 DRAWN BY: SJB



**SLEDD & ASSOCIATES, P.C.**  
 ENGINEERS PLANNERS SURVEYORS  
 11832 ROCK LANDING DRIVE, SUITE 203  
 NEWPORT NEWS, VIRGINIA 23606  
 (757) 873-3386

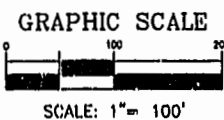


NOW OR FORMERLY  
 POWHATAN ENTERPRISES, INC.



**CURVE DATA**

NUMBER	DELTA	RADIUS	LENGTH	TANGENT	CHORD	CHORD BEARING
C72	45°00'31"	280.00'	219.95'	116.00'	214.34'	S02°24'52"W
C73	41°26'14"	924.91'	668.91'	349.84'	654.43'	S89°25'26"W



PLAT RECORDED IN  
 P.B. NO. *72* PAGE *1-3*

Recorded *30th day of December 99*  
 DOCUMENT # *990027007*  
*Steph J. W. [Signature]*