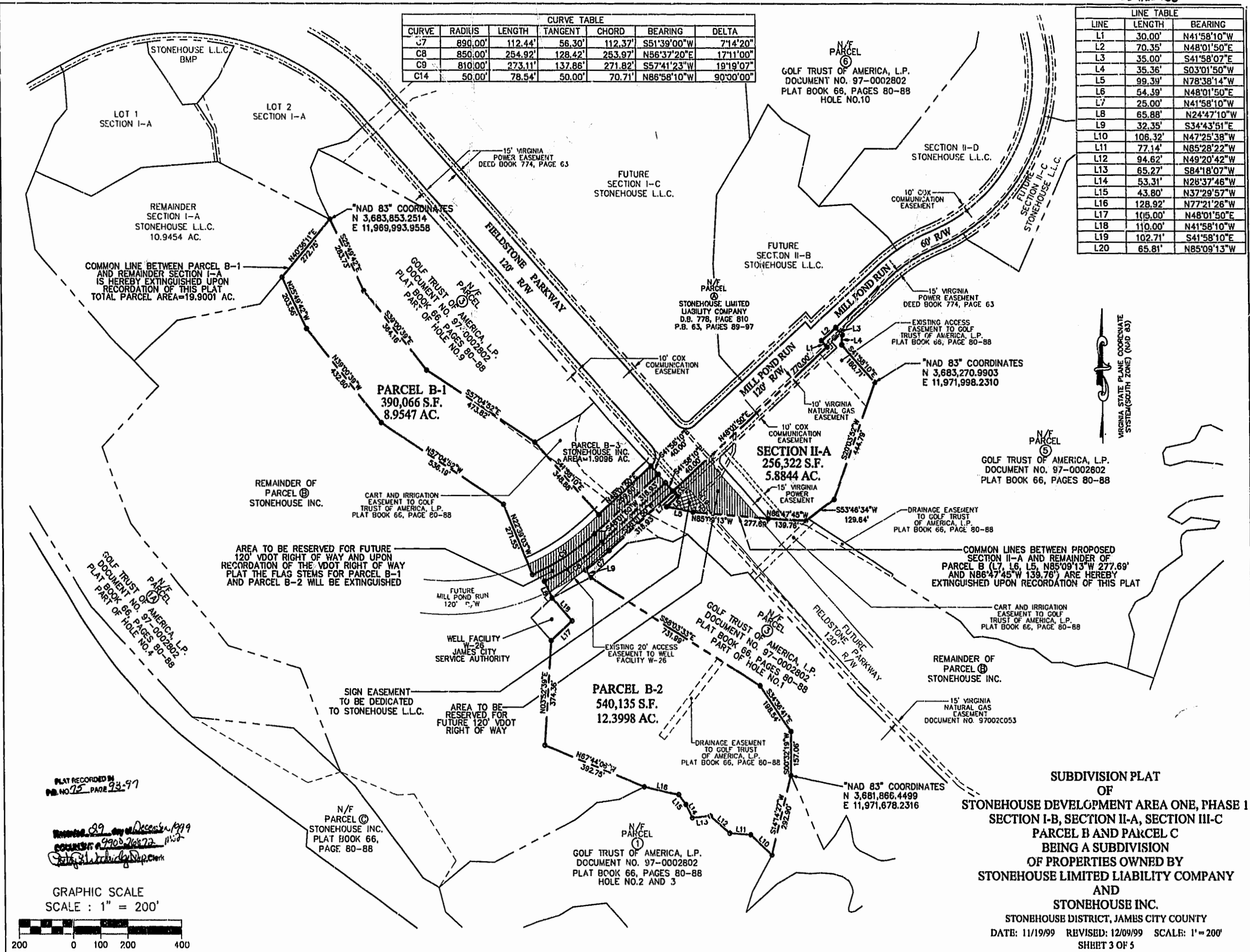


CURVE TABLE						
CURVE	RADIUS	LENGTH	TANGENT	CHORD	BEARING	DELTA
C7	890.00'	112.44'	56.30'	112.37'	S51°39'00"W	7°14'20"
C8	850.00'	254.92'	128.42'	253.97'	N56°37'20"E	17°11'00"
C9	810.00'	273.11'	137.86'	271.82'	S57°41'23"W	19°19'07"
C14	50.00'	78.54'	50.00'	70.71'	N86°58'10"W	90°30'00"

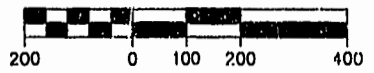
LINE TABLE		
LINE	LENGTH	BEARING
L1	30.00'	N41°58'10"W
L2	70.35'	N48°01'50"E
L3	35.00'	S41°58'07"E
L4	35.36'	S03°01'50"W
L5	99.39'	N78°38'14"W
L6	54.39'	N48°01'50"E
L7	25.00'	N41°58'10"W
L8	65.88'	N24°47'10"W
L9	32.35'	S34°43'51"E
L10	106.32'	N47°25'38"W
L11	77.14'	N85°28'22"W
L12	94.62'	N49°20'42"W
L13	65.27'	S84°18'07"W
L14	53.31'	N28°37'46"W
L15	43.80'	N37°29'57"W
L16	128.92'	N77°21'26"W
L17	115.00'	N48°01'50"E
L18	110.00'	N41°58'10"W
L19	102.71'	S41°58'10"E
L20	65.81'	N85°09'13"W



PLAT RECORDED IN
BOOK NO. 75 PAGE 93-97

Witnessed 29 day of December 1999
COUNTY OF 4900 2/16/72 11/50
[Signature]

GRAPHIC SCALE
SCALE: 1" = 200'



**SUBDIVISION PLAT
OF
STONEHOUSE DEVELOPMENT AREA ONE, PHASE I
SECTION I-B, SECTION II-A, SECTION III-C
PARCEL B AND PARCEL C
BEING A SUBDIVISION
OF PROPERTIES OWNED BY
STONEHOUSE LIMITED LIABILITY COMPANY
AND
STONEHOUSE INC.
STONEHOUSE DISTRICT, JAMES CITY COUNTY
DATE: 11/19/99 REVISED: 12/09/99 SCALE: 1" = 200'
SHEET 3 OF 5**