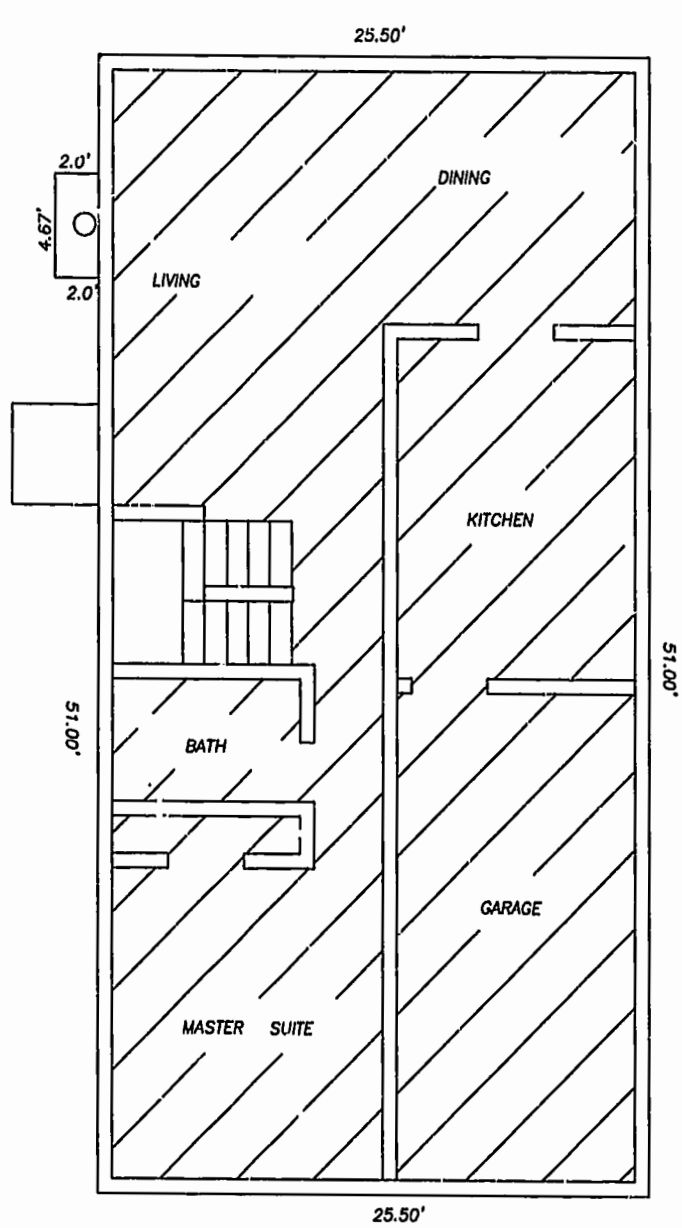
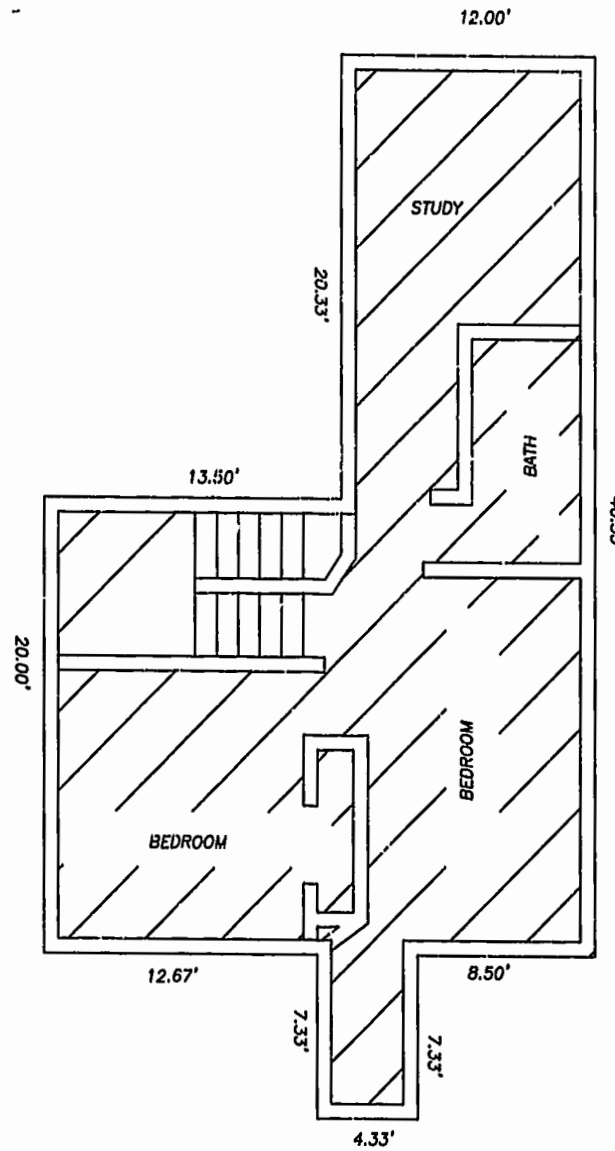


**NOTES:**

1. ALL BUILDING DIMENSIONS AND INTERIOR DIMENSIONS ARE IN FEET.
2. THE PORTION OF THE IMPROVEMENTS DESIGNATED AS A UNIT IS SUBJECT TO THE DEFINITION OF THE TERM "UNIT" IN THE DECLARATION. EXTERIOR WALLS, DIVIDING WALLS BETWEEN UNITS, AND COLUMNS OR LOAD BEARING MEMBERS WHICH SUPPORT MORE THAN ONE UNIT ARE NOT PART OF THE UNIT.
3. INTERIOR UNIT CONFIGURATIONS AND PARTITIONS AS DEPICTED HEREON ARE FOR ILLUSTRATION ONLY AND MAY NOT REPRESENT THE INTERIOR OF A UNIT AS ACTUALLY BUILT.

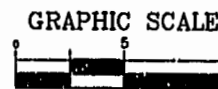


MODEL D  
FIRST FLOOR



MODEL D  
SECOND FLOOR

LEGEND  
 UNIT AREA



PLAY RECORDED IN  
P.B. NO. 75 PAGE 87-88

3:15 PM  
 Recorded 22 day of Dec 1999  
 DOCUMENT # 99-26706  
 Helene S. Wend Clerk  
 W. Page Cockrell, L.S.



THE UNDERSIGNED CERTIFIES THAT THESE PLANS ARE ACCURATE AND COMPLY WITH THE PROVISIONS OF CODE OF VIRGINIA, SECTION 55-79.58.B AND THAT ALL UNITS OR PORTIONS THEREOF DEPICTED HEREON AND ALL COMMON ELEMENTS HAVE BEEN SUBSTANTIALLY COMPLETED.

SIGNED:   
 W. PAGE COCKRELL, L.S.

EXHIBIT B-3

**SUPPLEMENTAL CONDOMINIUM PLAN  
 OF  
 CROMWELL RIDGE CONDOMINIUMS  
 JAMES CITY COUNTY, VIRGINIA**

DATE: 12/13/99 SHEET 4 OF 5 SCALE: 1"=5'  
 PROJECT NO: 30807.00 DRAWN BY: SAA

**VHIB** Vanasse Hangen Brustlin, Inc.  
 Transportation Land Development Environmental Services  
 11832 Rock Landing Drive, Suite 203  
 Newport News, Virginia 23608  
 (757) 873-3386 • FAX (757) 873-0757

\\vanawp\projects\97003\97003plt.dwg Fr:1 Dec 17 11:03:24 1999