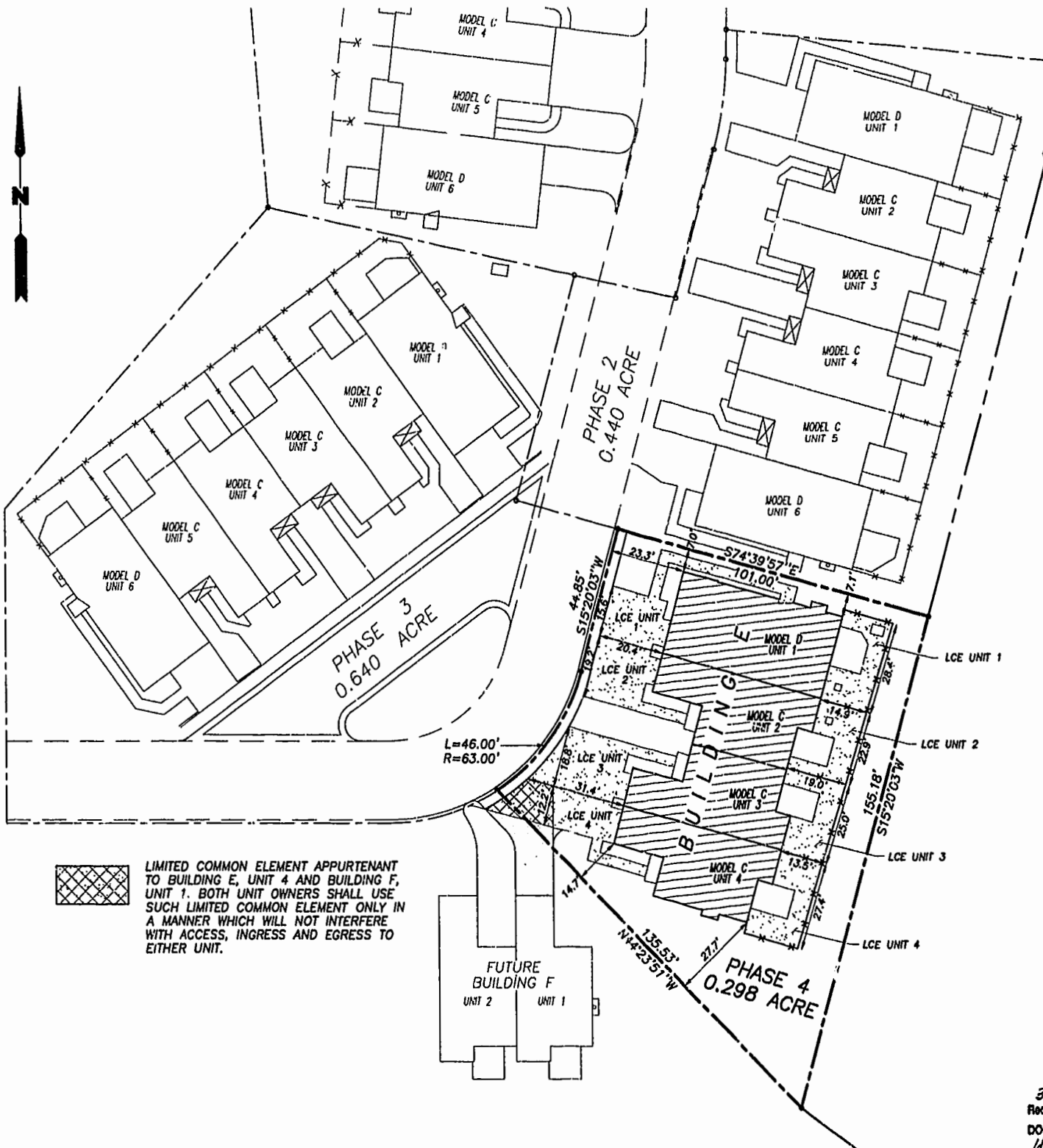


D.B. 804, PG. 740



NOTES:

1. MERIDIAN BASED ON PLAT RECORDED IN D.B. 803, PAGE 740.
2. SEE SHEET 3 OF 4 FOR EXTERIOR BUILDING DIMENSIONS.
3. THE PORTION OF THE IMPROVEMENTS DESIGNATED AS A UNIT IS SUBJECT TO THE DEFINITION OF THE TERM "UNIT" IN THE DECLARATION. EXTERIOR WALLS, DIVIDING WALLS BETWEEN UNITS, AND COLUMNS OR LOAD BEARING MEMBERS WHICH SUPPORT MORE THAN ONE UNIT ARE NOT PART OF THE UNIT.
4. INTERIOR UNIT CONFIGURATIONS AND PARTITIONS AS DEPICTED HEREON ARE FOR ILLUSTRATION ONLY AND MAY NOT REPRESENT THE INTERIOR OF A UNIT AS ACTUALLY BUILT.
5. THE DESIGNATION COMMON ELEMENTS IS NOT INTENDED TO IMPLY THAT ADDITIONAL LAND IS A COMMON ELEMENT.
6. THE DESIGNATION UNIT AREA IS SUPERSEDED BY THE DEFINITION OF UNIT AREA IN THE DECLARATION AND IS NOT INTENDED TO IMPLY THAT THE COMMON ELEMENTS ARE UNIT AREA.
7. "LCE UNIT \_\_\_\_" DESIGNATES LIMITED COMMON ELEMENT TO UNIT INDICATED.



LIMITED COMMON ELEMENT APPURTENANT TO BUILDING E, UNIT 4 AND BUILDING F, UNIT 1. BOTH UNIT OWNERS SHALL USE SUCH LIMITED COMMON ELEMENT ONLY IN A MANNER WHICH WILL NOT INTERFERE WITH ACCESS, INGRESS AND EGRESS TO EITHER UNIT.



THE UNDERSIGNED CERTIFIES THAT THESE PLATS ARE ACCURATE AND COMPLY WITH THE PROVISIONS OF CODE OF VIRGINIA, SECTION 55-79.58.A AND THAT ALL UNITS OR PORTIONS THEREOF DEPICTED HEREON AND ALL COMMON ELEMENTS HAVE BEEN SUBSTANTIALLY COMPLETED.

SIGNED: *W. Page Cockrell*  
W. PAGE COCKRELL, L.S.

EXHIBIT B-3

**SUPPLEMENTAL CONDOMINIUM PLAT  
OF  
CROMWELL RIDGE CONDOMINIUMS**

JAMES CITY COUNTY, VIRGINIA

DATE: 12/13/99 SHEET 2 OF 5 SCALE: 1"=25'

PROJECT NO: 30807.00 DRAWN BY: SAA



Vanasse Hangen Brustlin, Inc.  
Transportation Land Development Environmental Services  
11832 Rock Landing Drive, Suite 203  
Newport News, Virginia 23608  
(757) 873-3380 • FAX (757) 873-0157

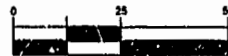
LEGEND

- PROPERTY BOUNDARY LINE
- PHASE LINE
- UNIT AREA
- LIMITED COMMON ELEMENT
- COMMON ELEMENT

3:15PM  
Recorded 22 day of Dec 1999  
DOCUMENT # 99022670 C  
Helen S. ... Clerk  
By Claudia ... 3

PLAT RECORDED IN  
P.D. NO. 75 PAGE 85

GRAPHIC SCALE



SCALE: 1"=25'