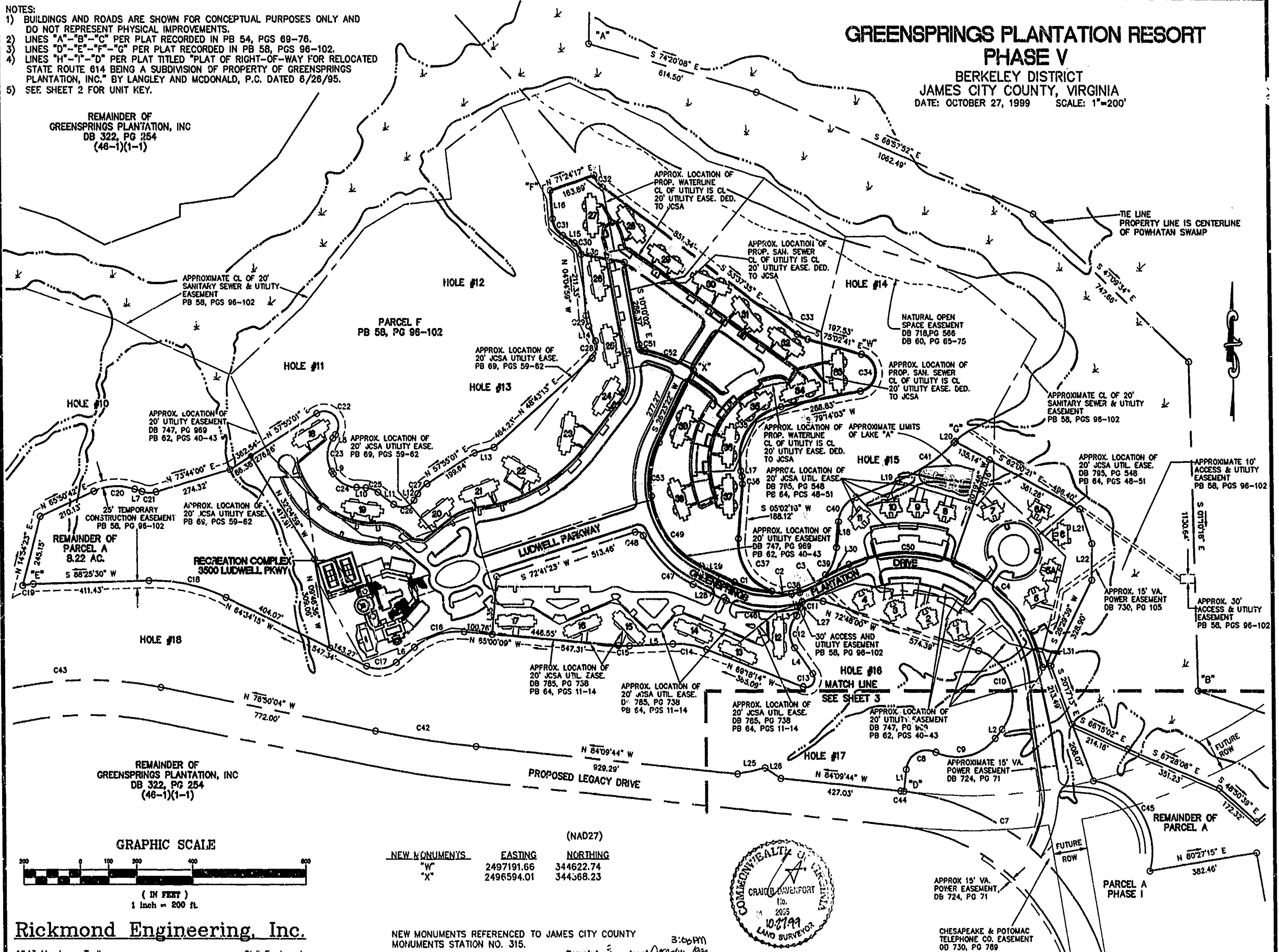


- NOTES:
- 1) BUILDINGS AND ROADS ARE SHOWN FOR CONCEPTUAL PURPOSES ONLY AND DO NOT REPRESENT PHYSICAL IMPROVEMENTS.
 - 2) LINES "A"- "B"- "C" PER PLAT RECORDED IN PB 54, PGS 89-78.
 - 3) LINES "D"- "E"- "F"- "G" PER PLAT RECORDED IN PB 58, PGS 96-102.
 - 4) LINES "H"- "I"- "D" PER PLAT TITLED "PLAT OF RIGHT-OF-WAY FOR RELOCATED STATE ROUTE 814 BEING A SUBDIVISION OF PROPERTY OF GREENSPRINGS PLANTATION, INC." BY LANGLEY AND MCDONALD, P.C. DATED 6/26/95.
 - 5) SEE SHEET 2 FOR UNIT KEY.

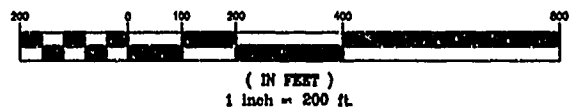
GREENSPRINGS PLANTATION RESORT PHASE V

BERKELEY DISTRICT
JAMES CITY COUNTY, VIRGINIA
DATE: OCTOBER 27, 1999 SCALE: 1"=200'

REMAINDER OF
GREENSPRINGS PLANTATION, INC
DB 322, PG 254
(48-1)(1-1)



GRAPHIC SCALE



(NAD27)

NEW MONUMENTS	EASTING	NORTHING
"W"	2497191.66	344622.74
"X"	2496594.01	344368.23



NEW MONUMENTS REFERENCED TO JAMES CITY COUNTY
MONUMENTS STATION NO. 315.

Recorded 3 day of October 1999
DOCUMENT # 910-26352 3:00 PM

PLAT RECORDED IN
P.B. NO. 75 PAGE 63-66

CHESAPEAKE & POTOMAC
TELEPHONE CO. EASEMENT
DB 730, PG 789

Rickmond Engineering, Inc.

1643 Merrimac Trail
Williamsburg VA 23185
(757)229-1776

Civil Engineering
Environmental Engineering
Land Surveying