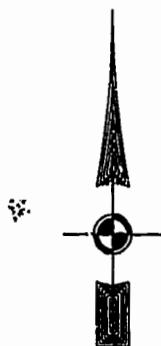


PLAT RECORDED IN
P.B. NO. 92 PAGE 20-67

Recorded 30 day of October 1999
DOCUMENT # 990225005 2:57
Robert S. Wood Clerk



46-1-01-0-0001
"GREENSPRINGS PLANTATION"
(DB 322, PG 254)

EXIST. 20' JAMES CITY COUNTY SERVICE
AUTHORITY SAN. SEWER EASEMENT AS
SHOWN IN AS-BUILT LOCATION. D.B. 141 - PG. 388

EXIST. 20' DRAINAGE EASEMENT
M.B. 65 - PG. 2

EXIST. 20' DRAINAGE EASMT.
M.B. 65 - PG. 2

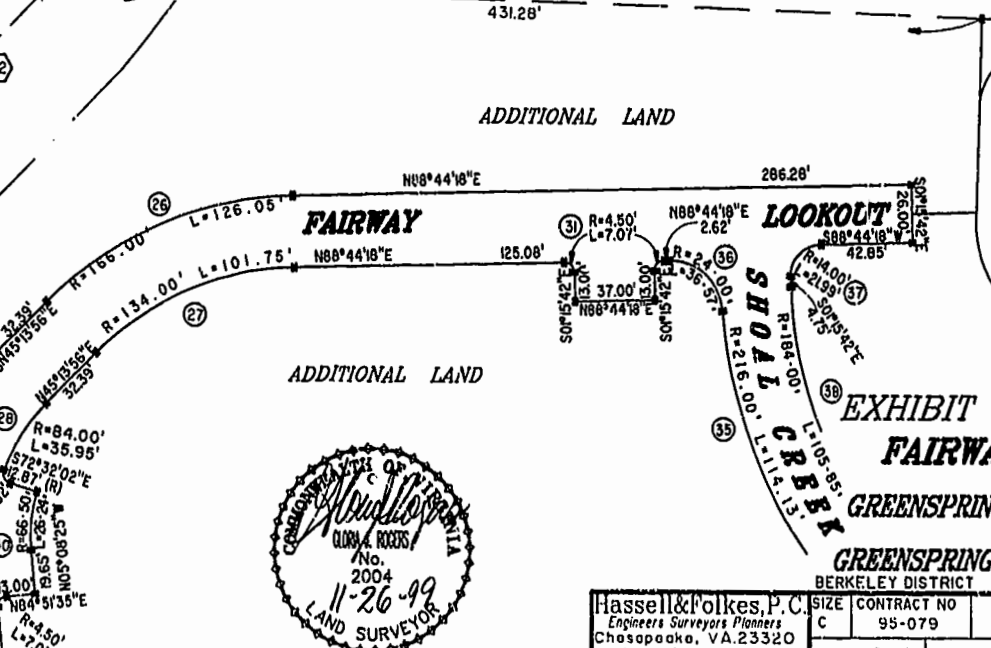
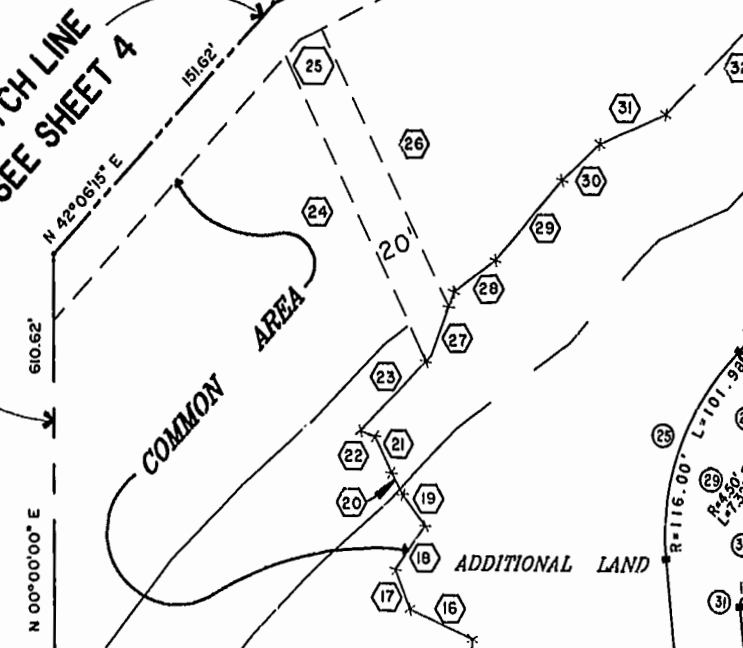
N 76° 40' 21" E
20' SANITARY SEWER EASEMENT

COMMON AREA
LIMITS OF 50' RPA
LIMITS OF 100' RPA

EX. 50' COLONIAL PIPELINE EASEMENT (D.B. 90 PG. 1)
COMMON AREA

MATCH LINE
SEE SHEET 4

MATCH LINE - SEE SHEET 3



COMMON AREA
BMP LAKE # 1
AREA = 38,052 SQ. FT. =
0.8735 AC.
SEE SHEET 3 FOR DETAIL

EXHIBIT "A" PHASE 39
FAIRWAYS VILLAS
AT
GREENSPRINGS, A CONDOMINIUM
FOR
GREENSPRINGS DEVELOPMENT, L.C.
BERKELEY DISTRICT JAMES CITY COUNTY, VIRGINIA



Hassell & Folkes, P.C. Engineers Surveyors Planners Chasapeake, VA 23320 (757) 547-9531	SIZE C CONTRACT NO 95-079	DISK/BOX 6P/16 REF: 10/13	FILENAME FAIRWAY39.DWG FWAYPLAT.DWG	REV.
SCALE: 1" = 50'		DATE: 07/29/99		SHEET 5 of 6

CONDO-3