

46-1-01-0-0001  
"GREENSPRINGS PLANTATION"  
(08 322, PG 254)

PLAT RECORDED IN  
P.B. NO. 75 PAGE 101

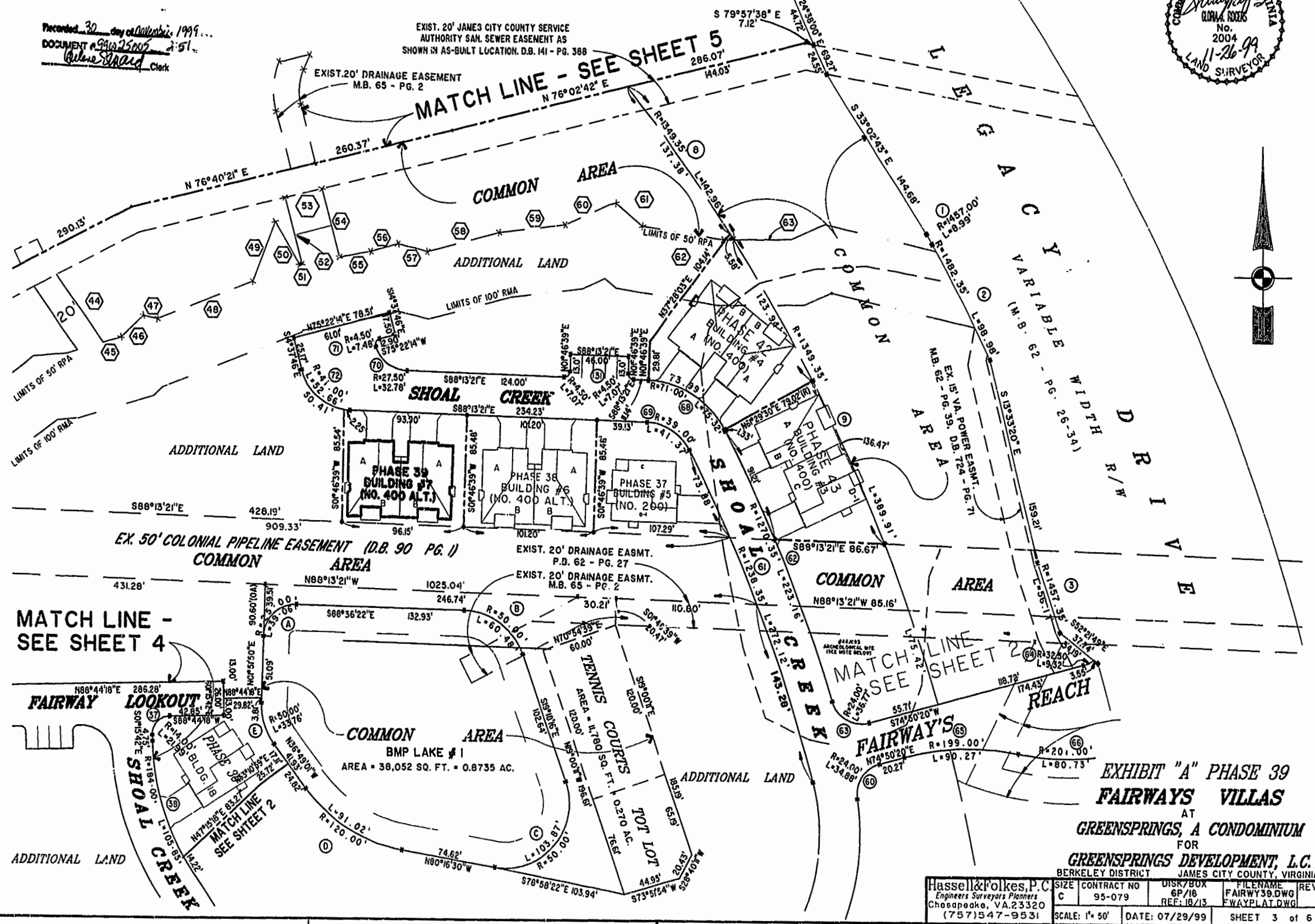
Recorded 30 day of October, 1999...  
DOCUMENT # 941025005  
Arlene Shand Clerk

EXIST. 20' JAMES CITY COUNTY SERVICE  
AUTHORITY SAN. SEWER EASEMENT AS  
SHOWN IN AS-BUILT LOCATION, D.B. 141 - PG. 388



MATCH LINE - SEE SHEET 5  
N 76°02'42" E  
286.07'  
144.03'

EXIST. 20' DRAINAGE EASEMENT  
M.B. 65 - PG. 2



EX. 50' COLONIAL PIPELINE EASEMENT (D.B. 90 PG. 1)  
COMMON AREA

MATCH LINE -  
SEE SHEET 4

MATCH LINE  
SEE SHEET 2

EXHIBIT "A" PHASE 39  
FAIRWAYS VILLAS  
AT  
GREENSPRINGS, A CONDOMINIUM  
FOR  
GREENSPRINGS DEVELOPMENT, L.C.  
BERKELEY DISTRICT JAMES CITY COUNTY, VIRGINIA

Hassell & Folkes, P.C. Engineers Surveyors Planners Chesapeake, VA 23320 (757)547-9531		SIZE C	CONTRACT NO 95-079	DISK/BOX 6P/16	FILENAME FAIRWAY39.DWG	REV. REF: 10/13 FWAYPLAT.DWG
SCALE: 1" = 50'		DATE: 07/29/99		SHEET 3 of 6		

Conto-3