

"GREENSPRINGS PLANTATION"

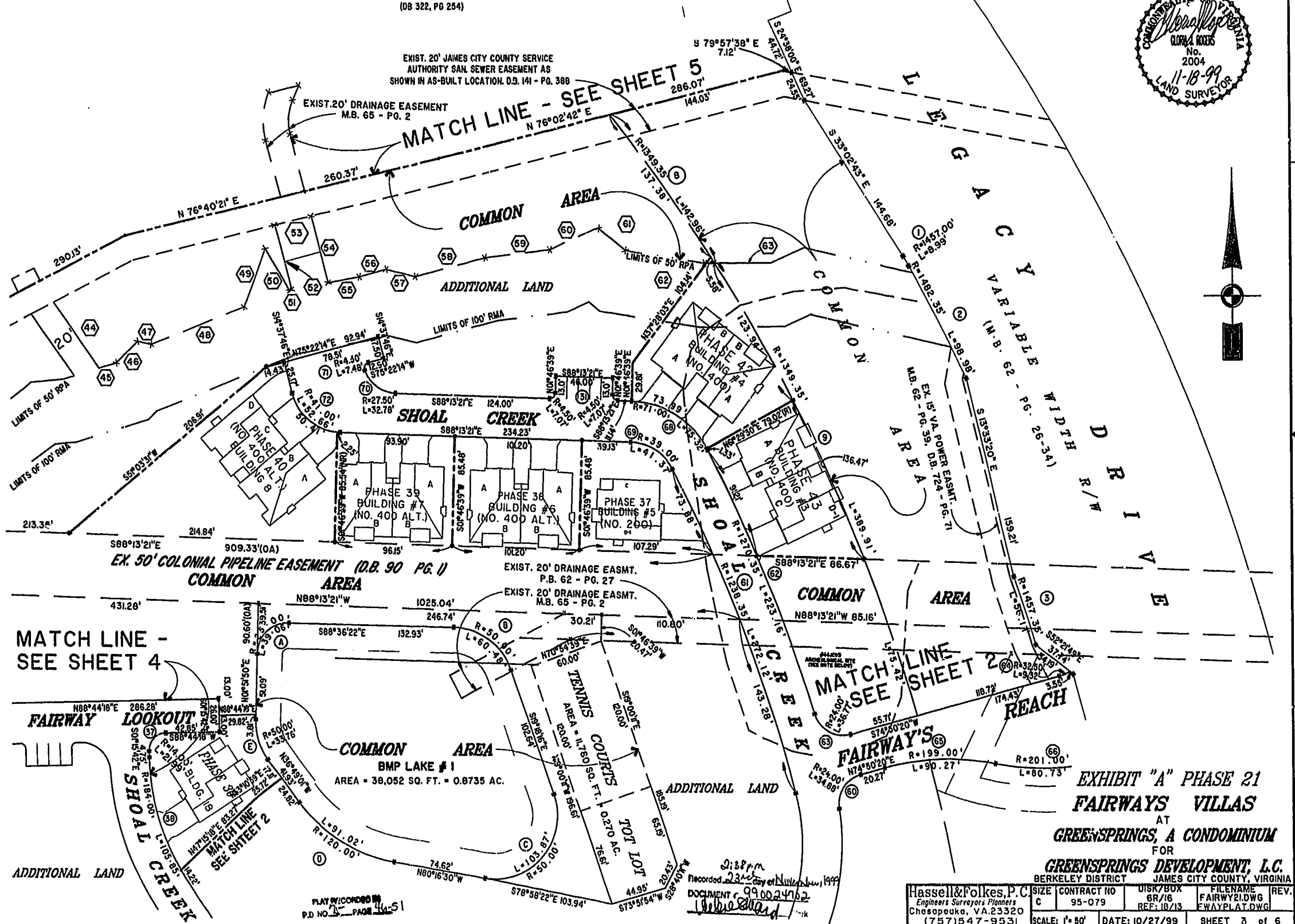
46-1-01-0-0001
(OB 322, PG 254)

EXIST. 20' JAMES CITY COUNTY SERVICE
AUTHORITY SAN. SEWER EASEMENT AS
SHOWN IN AS-BUILT LOCATION. D.S. 141 - PG. 388



MATCH LINE - SEE SHEET 5

EXIST. 20' DRAINAGE EASEMENT
M.B. 65 - PG. 2



EX. 50' COLONIAL PIPELINE EASEMENT (D.B. 90 PG. 1)
COMMON AREA

MATCH LINE -
SEE SHEET 4

MATCH LINE
SEE SHEET 2

COMMON AREA
BMP LAKE # 1
AREA = 38,052 SQ. FT. = 0.8735 AC.

EXHIBIT "A" PHASE 21
FAIRWAYS VILLAS
AT
GREENSPRINGS, A CONDOMINIUM
FOR

GREENSPRINGS DEVELOPMENT, L.C.
BERKELEY DISTRICT JAMES CITY COUNTY, VIRGINIA

Hassell & Folkes, P.C. Engineers Surveyors Planners Chesapeake, VA 23320 (757) 547-9531	SIZE CONTRACT NO C 95-079	DISK/BOX 6R/16 REF: 18/13	FILENAME FAIRWAY21.DWG FWAYPLAT.DWG	REV.
SCALE: 1" = 60'	DATE: 10/27/99	SHEET 3 of 6		

PLAY BY: CONDO 99
P.D. NO. 1 PAGE 44-51

Recorded 232
DOCUMENT 990024762
11-18-99