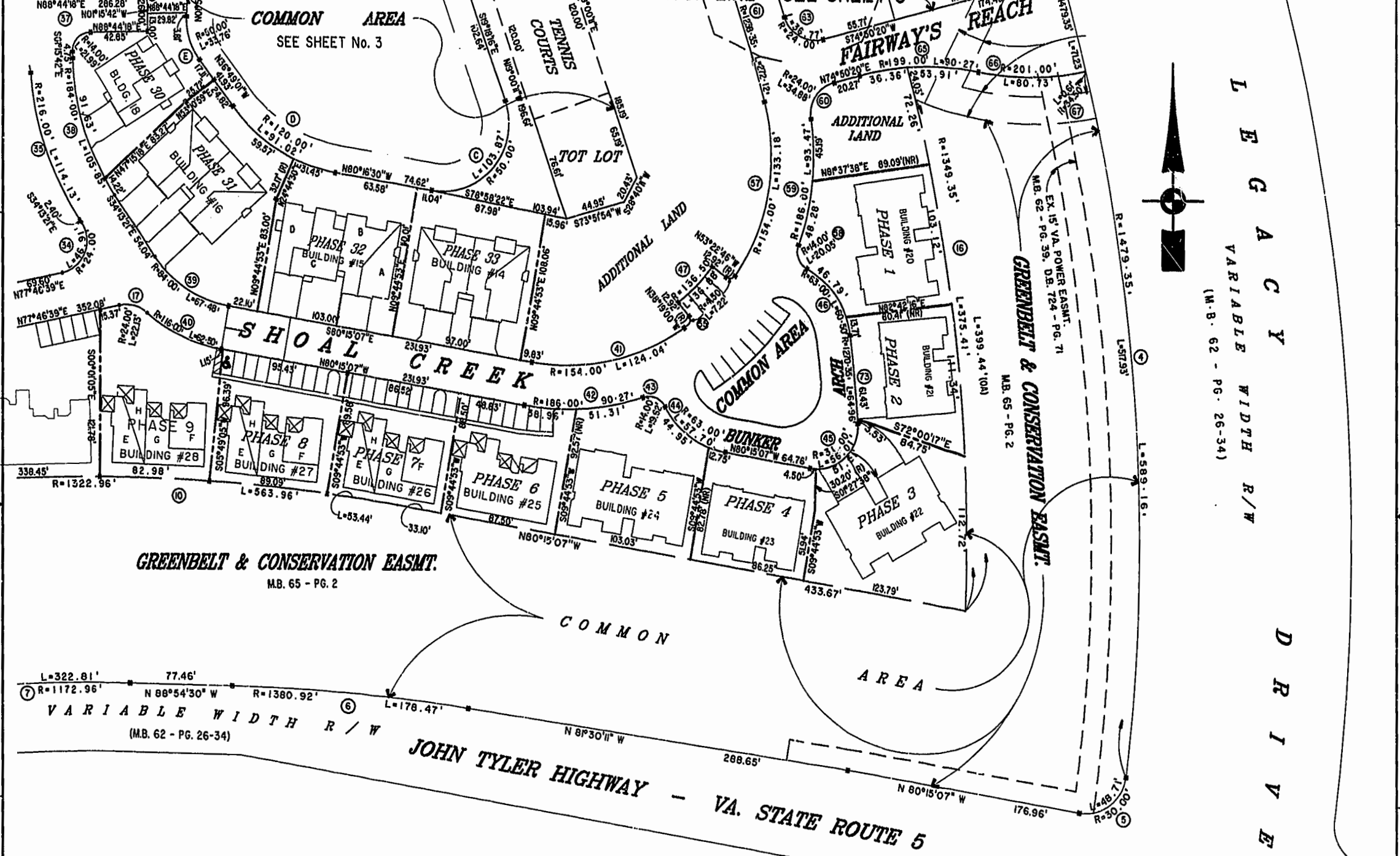


MATCH LINE SEE SHEET 4

MATCH LINE - SEE SHEET 3



LEGACY VARIABLE WIDTH R/W (M.B. 62 - PG. 26-34)

DRIVE

**GREENBELT & CONSERVATION EASMT.**  
M.B. 65 - PG. 2

**VARIABLE WIDTH R/W**  
(M.B. 62 - PG. 26-34)

**JOHN TYLER HIGHWAY - VA. STATE ROUTE 5**

2:38 p.m.  
Recorded 23rd day of November 1999  
DOCUMENT # 990024702



PLAT RECORDED  
P.B. NO. 75 PAGE 46-51

**EXHIBIT "A" PHASE 21  
FAIRWAYS VILLAS  
AT  
GREENSPRINGS, A CONDOMINIUM  
FOR  
GREENSPRINGS DEVELOPMENT, L.C.**  
BERKELEY DISTRICT JAMES CITY COUNTY, VIRGINIA

Hassell & Folkes, P.C. Engineers Surveyors Planners Chesapeake, VA. 23320 (757)547-9531	SIZE: C CONTRACT NO: 95-079	DISK/BOX: 6R/16 REF: 18/13	FILENAME: FAIRWY21.DWG FWAYPLAT.DWG	REV.
SCALE: 1" = 50'	DATE: 10/27/99	SHEET 2 of 6		