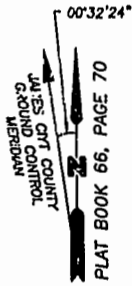


PLAT OF SUBDIVISION
WATERFORD
AT
POWHATAN SECONDARY
PHASE THIRTEEN
BERKELEY DISTRICT
JAMES CITY COUNTY, VIRGINIA

DATE: 10/21/98 SHEET 2 OF 3 SCALE: 1"=100'
PROJECT NO: 97-008 DRAWN BY: SJB



SLEDD & ASSOCIATES, P.C.
ENGINEERS PLANNERS SURVEYORS
11832 ROCK LANDING DRIVE, SUITE 203
NEWPORT NEWS, VIRGINIA 23606
(757) 873-3386

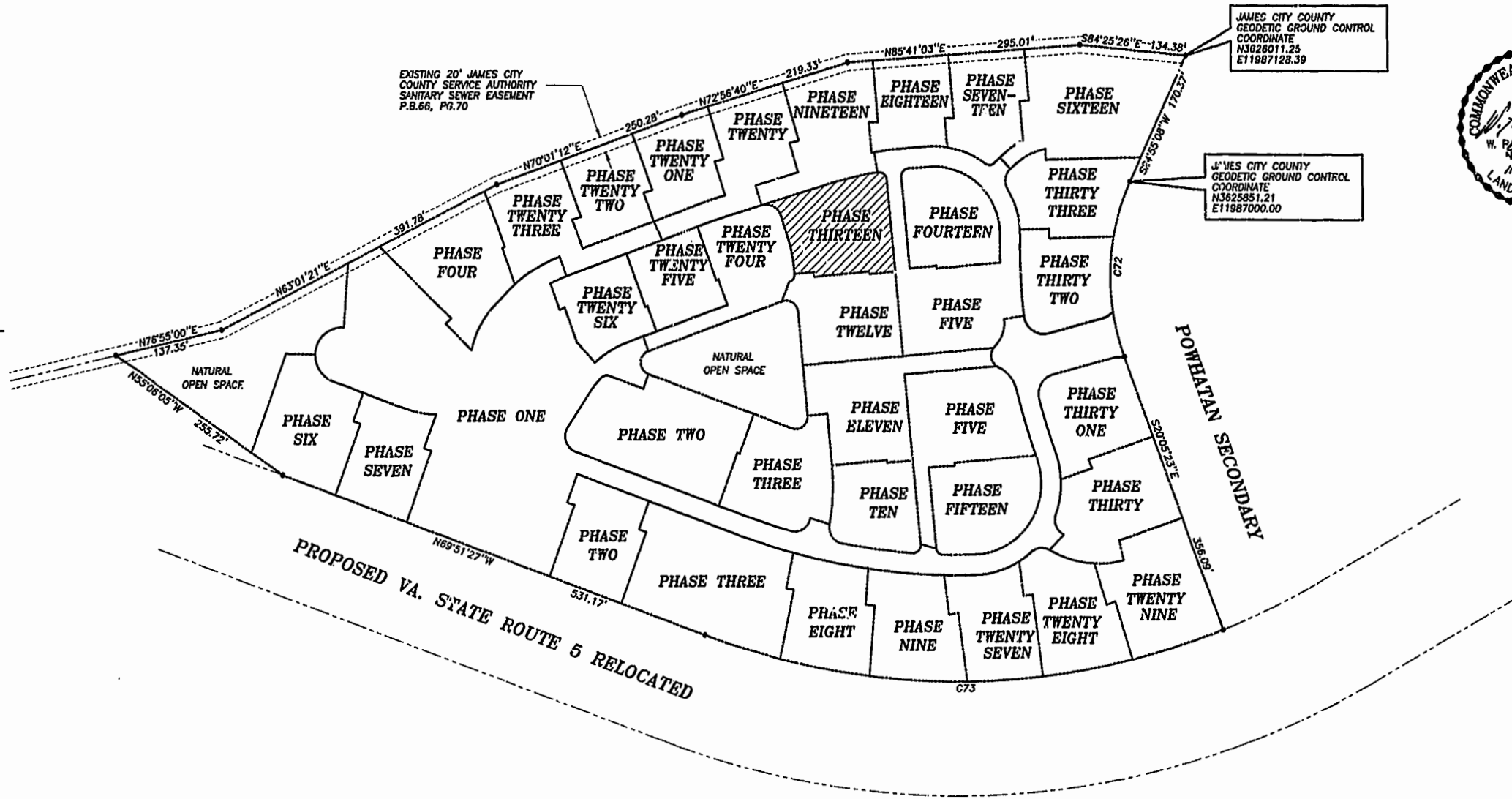


NOW OR FORMERLY
POWHATAN ENTERPRISES, INC.

EXISTING 20' JAMES CITY
COUNTY SERVICE AUTHORITY
SANITARY SEWER EASEMENT
P.B.66, PG.70

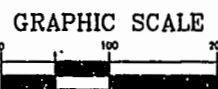
JAMES CITY COUNTY
GEODETIC GROUND CONTROL
COORDINATE
N3826011.25
E11987128.39

JAMES CITY COUNTY
GEODETIC GROUND CONTROL
COORDINATE
N3825851.21
E11987000.00



CURVE DATA

NUMBER	DELTA	RADIUS	LENGTH	TANGENT	CHORD	CHORD BEARING
C72	45°00'31"	280.00'	219.95'	116.00'	214.34'	S02°24'52"W
C73	41°26'14"	924.91'	668.91'	349.84'	654.43'	S89°25'26"W



SCALE: 1"= 100'

11:48 AM
Recorded 19 day of Nov 1999
DOCUMENT # 990024072
W. Page Cockrell Clerk

PLAT RECORDED IN
P.D. NO. 75 PAGE 42-45