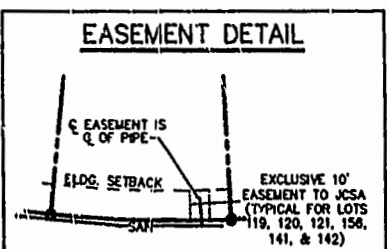


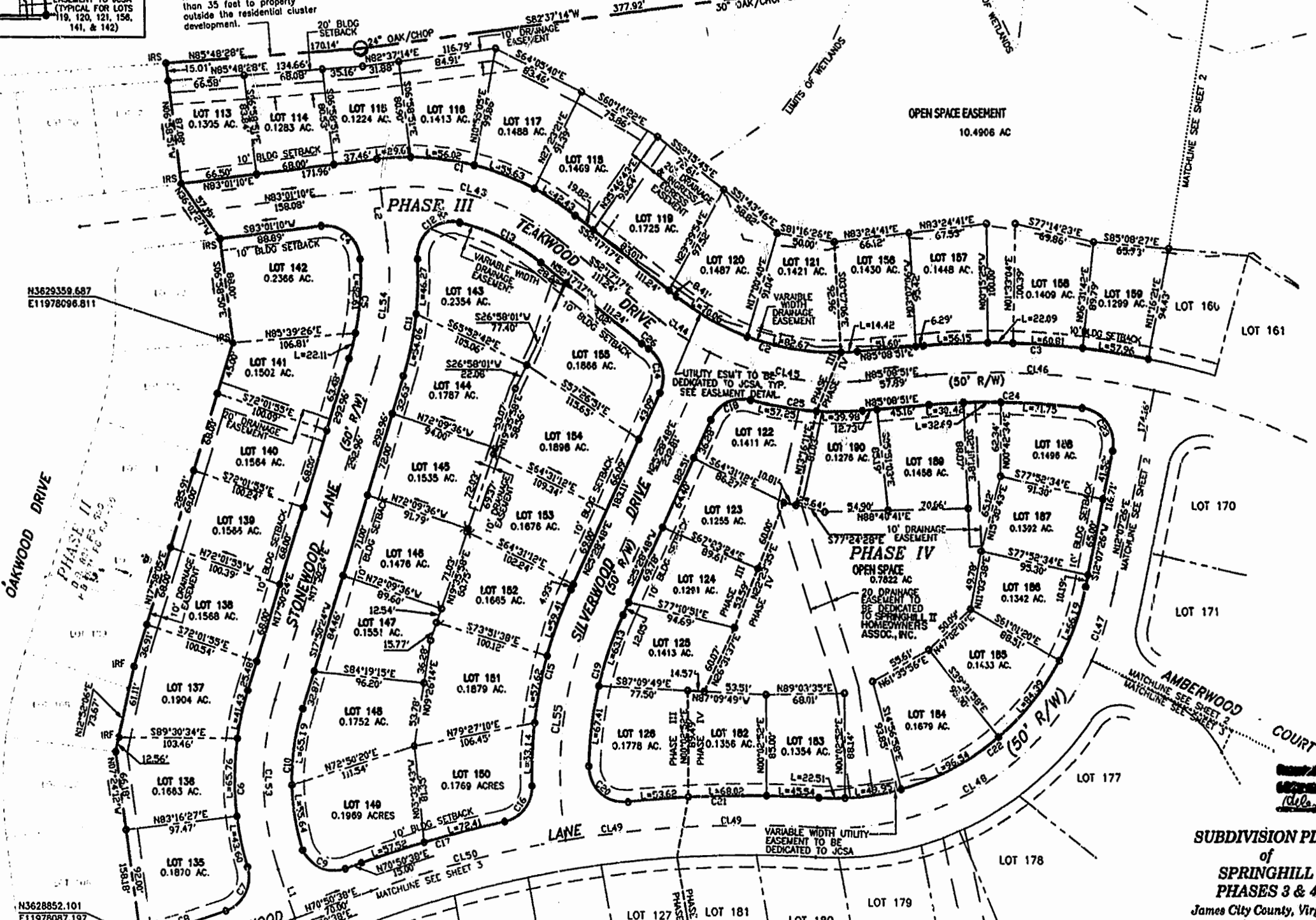
**EASEMENT DETAIL**



THE COORDINATES SHOWN ON THIS PLAT ARE REFERENCED TO VIRGINIA STATE PLANE COORDINATES SOUTH ZONE (NAD83), IN U.S. SURVEY FEET, BASED ON JAMES CITY COUNTY MONUMENT STATION NO. 322.

N/F  
CHARLES NEW  
(P.B. 6 PG. 31)  
D.R. 28 PG. 293)

No building may be closer than 35 feet to property outside the residential cluster development.



N3628852.101  
E11978087.197

N38°34'54"E  
79.50'

APPROVED BY: [Signature]  
DATE: 6/30/1999  
RELEASED BY: [Signature]

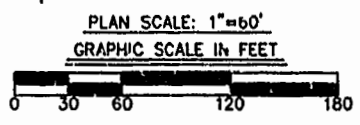
**SUBDIVISION PLAT**  
of  
**SPRINGHILL**  
PHASES 3 & 4  
James City County, Virginia  
Berkeley District  
Scale: 1"=60' Date: 6/30/1999

PLAT RECORDED IN  
P.B. NO. 75 PAGE 31-34

SHEET 1 OF 4

**SHEET INDEX**

SHEET 1	: Lots 113-126; Lots 135-159; Lots 182-190
SHEET 2	: Lots 160-173
SHEET 3	: Lots 127-134; Lots 174-181
SHEET 4	: Curve Table; Notes; Certifications



**Langley and McDonald, Inc.**  
Engineers, Surveyors, Planners  
Landscape Architects, Environmental Consultants  
4029 Ironbound Road Suite 100  
Williamsburg, VA (757)253-2975

DRAWN BY: LJV  
CHKD. BY: AJR  
PROJ. NO.: 1930039-000.56  
DWG. NO.: 10780W