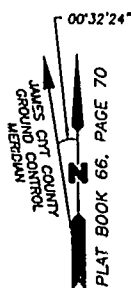


PLAT OF SUBDIVISION
WATERFORD
 AT
POWHATAN SECONDARY
 PHASE TWENTY-SIX
 BERKELEY DISTRICT
 JAMES CITY COUNTY, VIRGINIA

DATE: 10/21/98 SHEET 2 OF 3 SCALE: 1"=100'
 PROJECT NO: 97-008 DRAWN BY: SJB

SA SLEDD & ASSOCIATES, P.C.
 ENGINEERS PLANNERS SURVEYORS
 11832 ROCK LANDING DRIVE, SUITE 203
 NEWPORT NEWS, VIRGINIA 23806
 (757) 873-3386

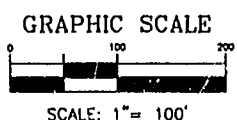
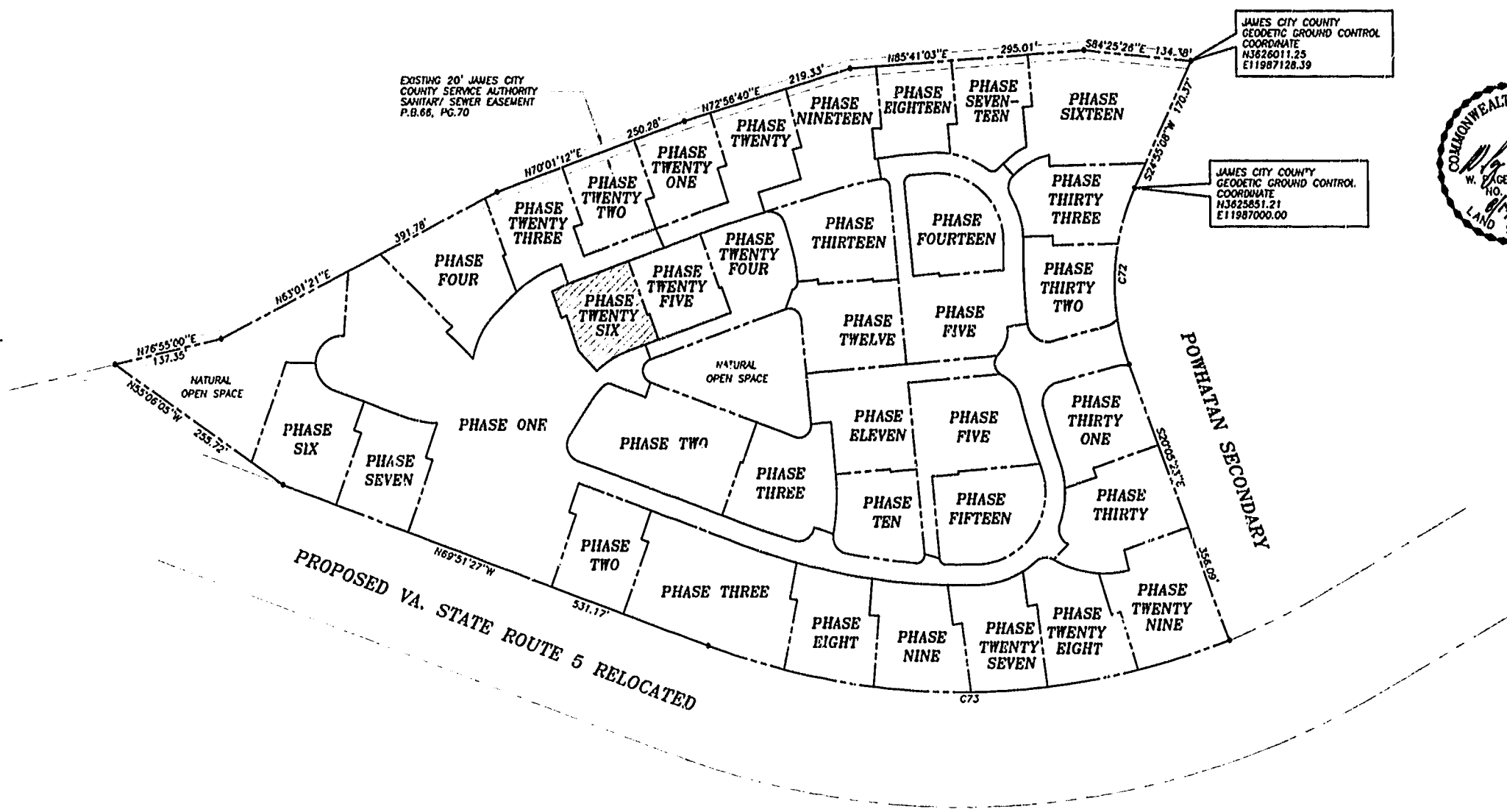
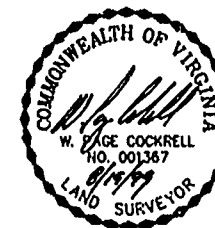


NOW OR FORMERLY
 POWHATAN ENTERPRISES, INC.

EXISTING 20' JAMES CITY
 COUNTY SERVICE AUTHORITY
 SANITARY/SEWER EASEMENT
 P.B.66, PG.70

JAMES CITY COUNTY
 GEODETIC GROUND CONTROL
 COORDINATE
 N3626011.25
 E11987128.39

JAMES CITY COUNTY
 GEODETIC GROUND CONTROL
 COORDINATE
 N3625851.21
 E11987000.00



11:56 AM
 Recorded 3 days of Nov. 1999
 DOCUMENT # 99-0023108
 [Signature] Clerk

CURVE DATA

NUMBER	DELTA	RADIUS	LENGTH	TANGENT	CHORD	CHORD BEARING
C72	45°00'31"	280.00'	219.95'	116.00'	214.34'	S02°24'52"W
C73	41°26'14"	924.91'	668.91'	349.84'	654.43'	S85°25'26"W

PLAT RECORDED IN
 PL. NO. 72 PAGE 27-29