

PLAT OF SUBDIVISION
WATERFORD
 AT
POWHATAN SECONDARY
 PHASE TWENTY-THREE
 BERKELEY DISTRICT
 JAMES CITY COUNTY, VIRGINIA

DATE: 10/21/98 SHEET 2 OF 3 SCALE: 1"=100'

PROJECT NO: 97-008 DRAWN BY: SJB



SLEDD & ASSOCIATES, P.C.
 ENGINEERS PLANNERS SURVEYORS
 11832 ROCK LANDING DRIVE, SUITE 203
 NEWPORT NEWS, VIRGINIA 23606
 (757) 873-3386



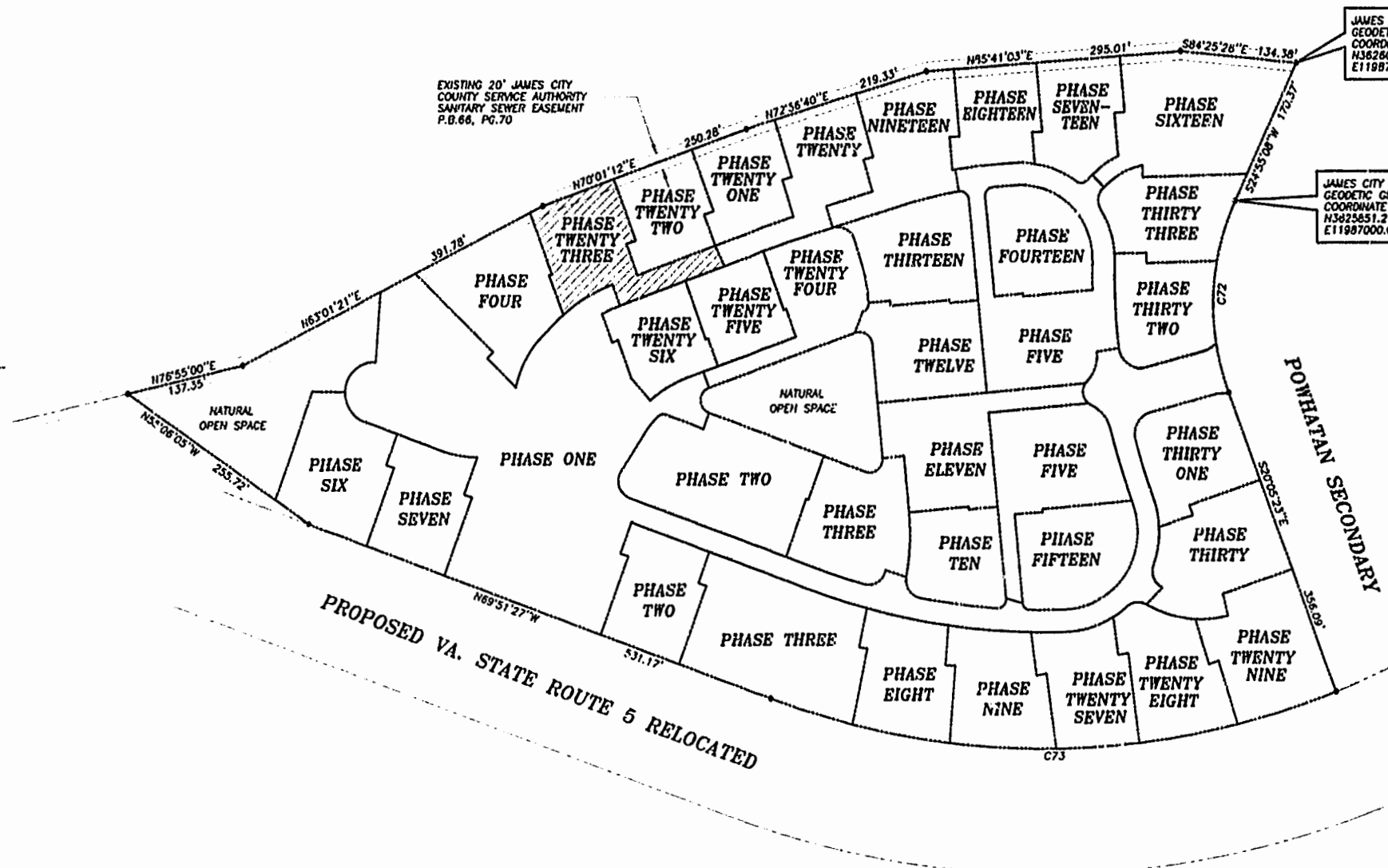
00'32'24"
 JAMES CITY COUNTY
 GROUND CONTROL
 MERIDIAN
 PLAT BOOK 66, PAGE 70

NOW OR FORMERLY
 POWHATAN ENTERPRISES, INC.

EXISTING 20' JAMES CITY
 COUNTY SERVICE AUTHORITY
 SANITARY SEWER EASEMENT
 P.B. 66, PG. 70

JAMES CITY COUNTY
 GEODETIC GROUND CONTROL
 COORDINATE
 N3828011.25
 E11987128.39

JAMES CITY COUNTY
 GEODETIC GROUND CONTROL
 COORDINATE
 N3825851.21
 E11987000.00



CURVE DATA

| NUMBER | DELTA | RADIUS | LENGTH | TANGENT | CHORD | CHORD BEARING |
|--------|-----------|---------|---------|---------|---------|---------------|
| C72 | 45°00'31" | 280.00' | 219.95' | 116.00' | 214.34' | S02°24'52"W |
| C73 | 41°26'14" | 924.91' | 668.91' | 349.84' | 654.43' | S89°25'26"W |

