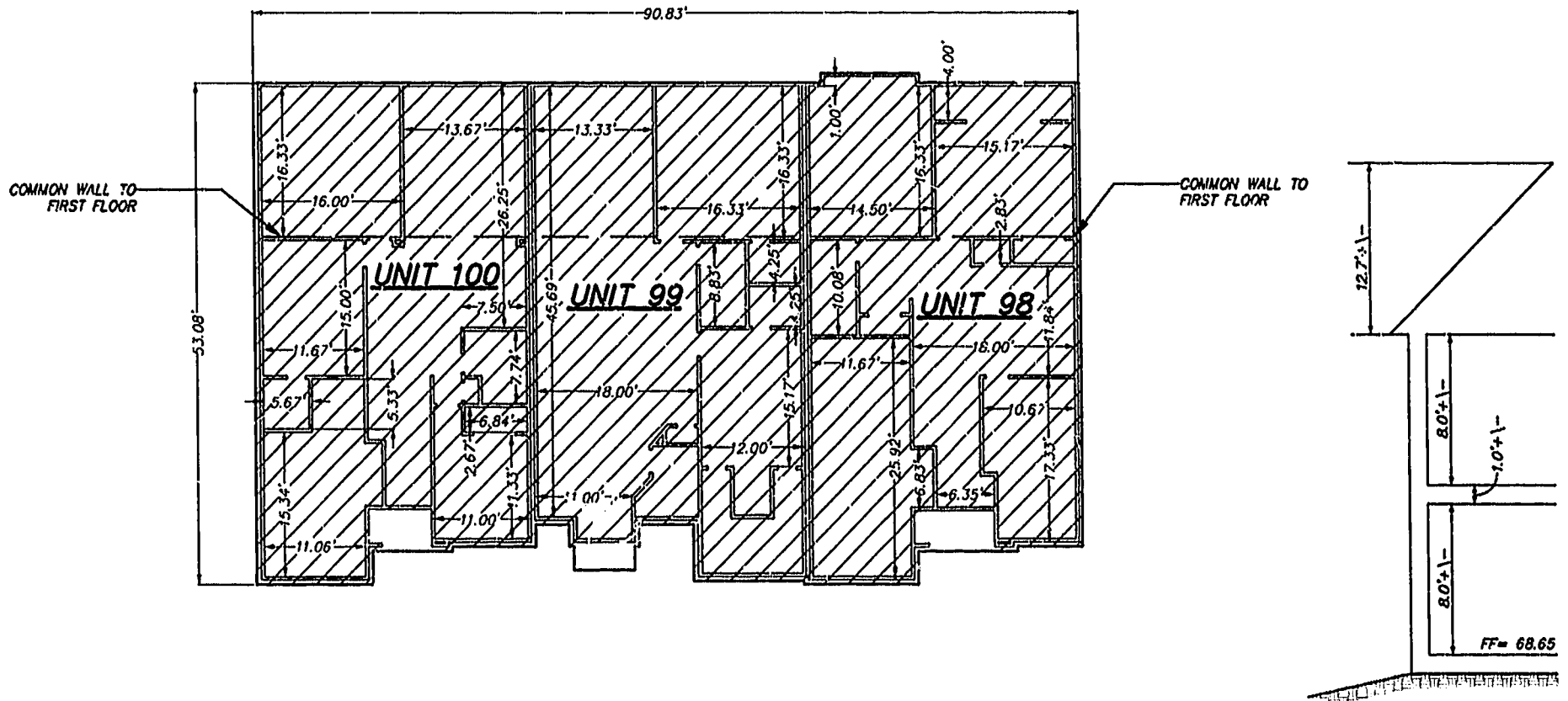


EXHIBIT B
CONDOMINIUM PLATS AND PLANS FOR
WYNDHAM PLANTATION
CONDOMINIUM

SECOND FLOOR BUILDING 18

SCALE: 1" = 10'

WILLIAMSBURG, VIRGINIA
 DATE: SEPTEMBER 27, 1999 SCALE: 1"=10'



NOTES:

- 1) BUILDING DIMENSIONS SHOWN HEREON ARE INTERIOR DIMENSIONS. THESE DIMENSIONS ARE IN FEET AND WERE TAKEN FROM PLANS SUPPLIED ENTITLED "WYNDHAM PLANTATION AT WILLIAMSBURG, FLOOR PLANS" BY PROGRESSIVE DESIGNS DATED 11/19/98
- 2) INTERIOR UNIT CONFIGURATIONS AND PARTITIONS AS DEPICTED HEREON ARE FOR THE PURPOSE OF ILLUSTRATION ONLY AND MAY NOT REPRESENT THE INTERIOR OF A UNIT AS ACTUALLY CONSTRUCTED.

PHASE	UNIT No.	UNIT ADDRESS	UNIT AREA
1	98	436 ZELKOVA DRIVE	1,799 S.F.
1	99	440 ZELKOVA DRIVE	1,957 S.F.
1	100	444 ZELKOVA DRIVE	1,853 S.F.

I HEREBY CERTIFY THAT THIS PLAN IS ACCURATE AND THAT IT COMPLIES WITH SECTION 55-79.58(B) OF THE VIRGINIA CONDOMINIUM ACT AS AMENDED AND THAT ALL UNITS OR PORTIONS THEREOF DEPICTED HEREON HAVE BEEN SUBSTANTIALLY COMPLETED EXCEPT AS OTHERWISE NOTED.

SIGNED: LA DATE: 9.21.99

9.21.99

1:31 PM
 Recorded 29 day of Oct 1999
 DOCUMENT # 991382

RECORDED IN
 P.D. NO. 25 PAGE 15-20

By Charles S. Ward Clerk
 By Clarence J. Smith By Blair

Rickmond Engineering, Inc.

1643 Merrimac Trail
 Williamsburg VA 23185
 Voice: (757) 229-1776
 Fax No. (757) 229-4683

Engineering
 Surveying
 Land Planning
 www.rickmond.com