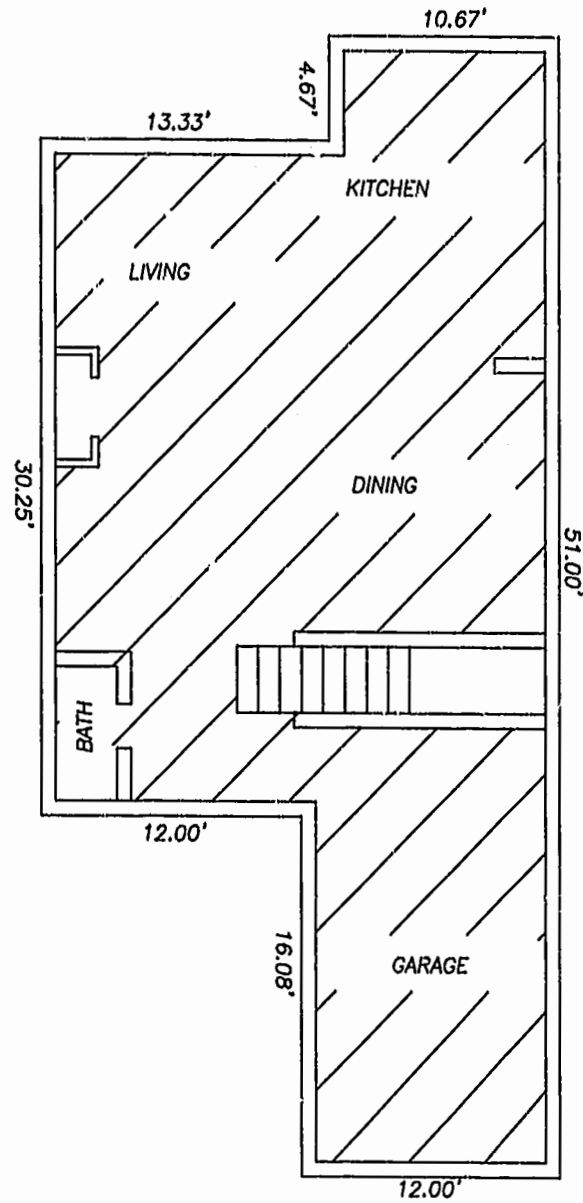
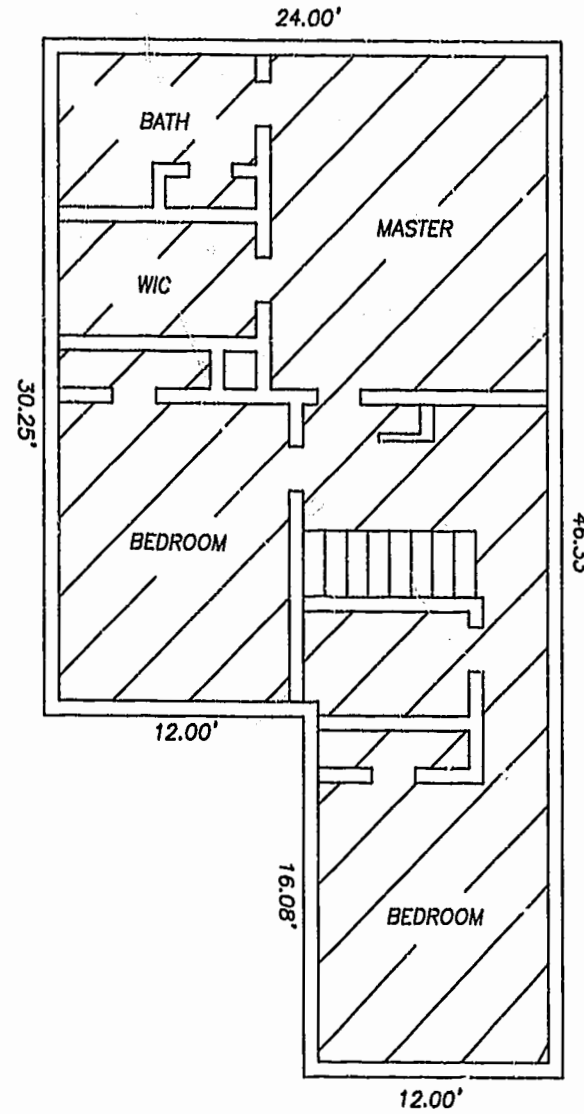


NOTES:

1. ALL BUILDING DIMENSIONS AND INTERIOR DIMENSIONS ARE IN FEET.
2. THE PORTION OF THE IMPROVEMENTS DESIGNATED AS A UNIT IS SUBJECT TO THE DEFINITION OF THE TERM "UNIT" IN THE DECLARATION. EXTERIOR WALLS, DIVIDING WALLS BETWEEN UNITS, AND COLUMNS OR LOAD BEARING MEMBERS WHICH SUPPORT MORE THAN ONE UNIT ARE NOT PART OF THE UNIT.
3. INTERIOR UNIT CONFIGURATIONS AND PARTITIONS AS DEPICTED HEREON ARE FOR ILLUSTRATION ONLY AND MAY NOT REPRESENT THE INTERIOR OF A UNIT AS ACTUALLY BUILT.



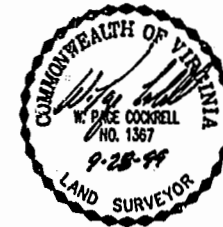
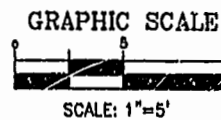
MODEL C
FIRST FLOOR



MODEL C
SECOND FLOOR

LEGEND
 UNIT AREA

PLAY RECORDED BY
 P.B. NO. 74 PAGE 23
 RECORDED 4 OCT 11 1999
 DOCUMENT # 9912208/3 11:39
 W. Page Cockrell, Clerk



THE UNDERSIGNED CERTIFIES THAT THESE PLANS ARE ACCURATE AND COMPLY WITH THE PROVISIONS OF CODE OF VIRGINIA, SECTION 55-79.5BB AND THAT ALL UNITS OR PORTIONS THEREOF DEPICTED HEREON AND ALL COMMON ELEMENTS HAVE BEEN SUBSTANTIALLY COMPLETED.

SIGNED: 
 W. PAGE COCKRELL, L.S.

EXHIBIT B-2

SUPPLEMENTAL CONDOMINIUM PLAN
OF
CROMWELL RIDGE CONDOMINIUMS
 JAMES CITY COUNTY, VIRGINIA

DATE: 9/28/99	SHEET 5 OF 5	SCALE: 1"=5'
PROJECT NO: 30807.00		DRAWN BY: SAA

SLEDD & ASSOCIATES, P.C.
 ENGINEERS PLANNERS SURVEYORS
 11832 ROCK LANDING DRIVE, SUITE 203
 NEWPORT NEWS, VIRGINIA 23606
 (767) 873-3386