

ROUTE 5
VARIABLE R/W

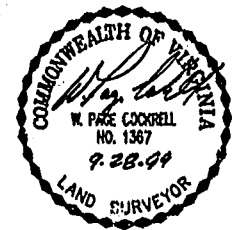
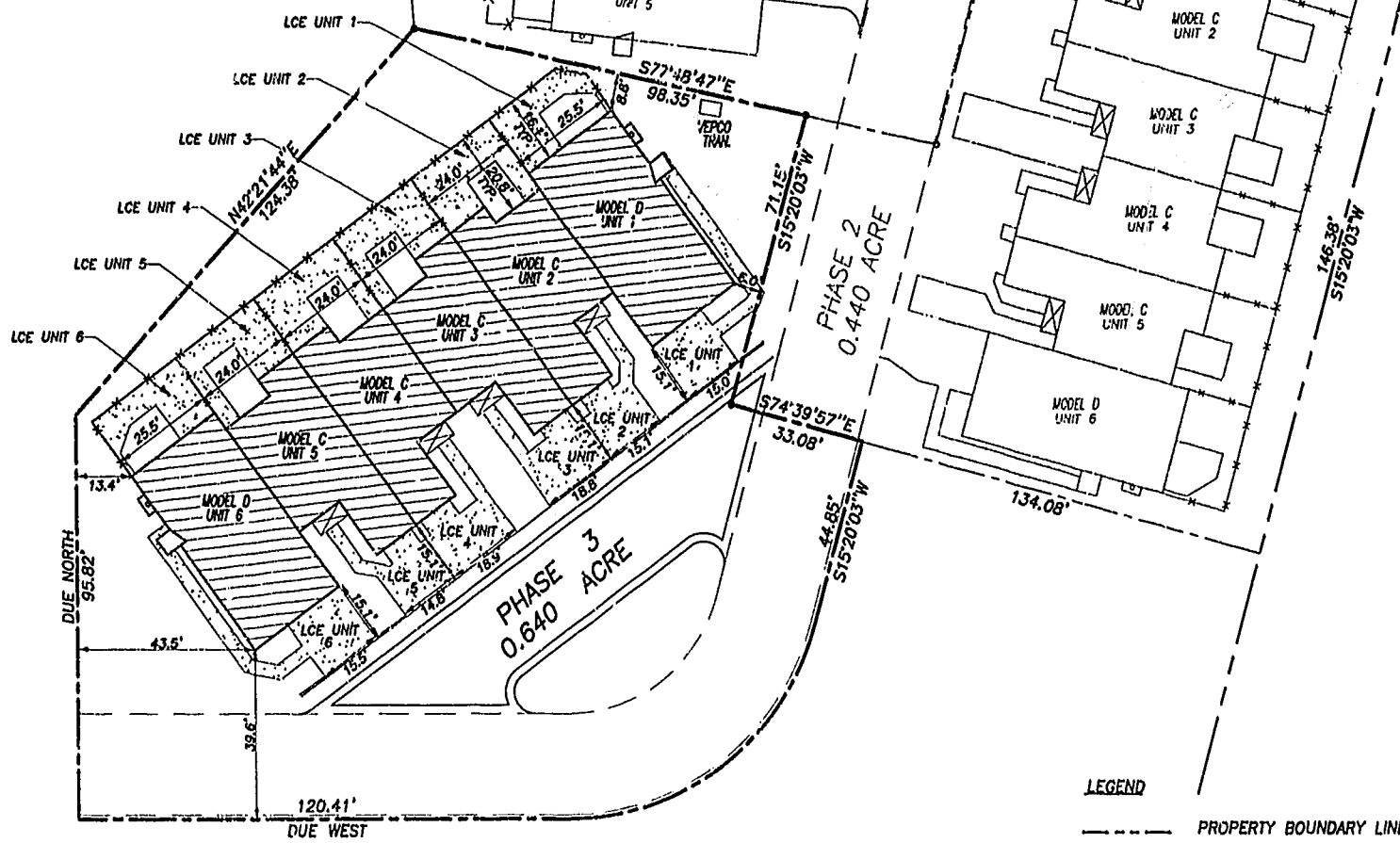
PHASE A
1.196 ACRES

501'11'37"W 260.91'

NOTES:

1. MERIDIAN BASED ON PLAT RECORDED IN D.B. 803, PAGE 740.
2. SEE SHEET 3 OF 4 FOR EXTERIOR BUILDING DIMENSIONS.
3. THE PORTION OF THE IMPROVEMENTS DESIGNATED AS A UNIT IS SUBJECT TO THE DEFINITION OF THE TERM "UNIT" IN THE DECLARATION. EXTERIOR WALLS, DIVIDING WALLS BETWEEN UNITS, AND COLUMNS OR LOAD BEARING MEMBERS WHICH SUPPORT MORE THAN ONE UNIT ARE NOT PART OF THE UNIT.
4. INTERIOR UNIT CONFIGURATIONS AND PARTITIONS AS DEPICTED HEREON ARE FOR ILLUSTRATION ONLY AND MAY NOT REPRESENT THE INTERIOR OF A UNIT AS ACTUALLY BUILT.
5. THE DESIGNATION COMMON ELEMENTS IS NOT INTENDED TO IMPLY THAT ADDITIONAL LAND IS A COMMON ELEMENT.
6. THE DESIGNATION UNIT AREA IS SUPERSEDED BY THE DEFINITION OF UNIT AREA IN THE DECLARATION AND IS NOT INTENDED TO IMPLY THAT THE COMMON ELEMENTS ARE UNIT AREA.
7. "LCE UNIT ____" DESIGNATES LIMITED COMMON ELEMENT TO UNIT INDICATED.

D.B. 804, PG. 740



THE UNDERSIGNED CERTIFIES THAT THESE PLATS ARE ACCURATE AND COMPLY WITH THE PROVISIONS OF CODE OF VIRGINIA, SECTION 55-79.58.A AND THAT ALL UNITS OR PORTIONS THEREOF DEPICTED HEREON AND ALL COMMON ELEMENTS HAVE BEEN SUBSTANTIALLY COMPLETED.

SIGNED: *W. Page Cockrell*
W. PAGE COCKRELL, L.S.

EXHIBIT B-2

**SUPPLEMENTAL CONDOMINIUM PLAT
OF
CROMWELL RIDGE CONDOMINIUMS**

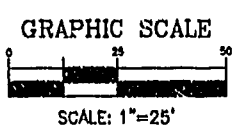
JAMES CITY COUNTY, VIRGINIA

DATE: 9/28/99 SHEET 2 OF 5 SCALE: 1"=25'

PROJECT NO: 30807.00 DRAWN BY: SAA

SLEDD & ASSOCIATES, P.C.
ENGINEERS, PLANNERS, SURVEYORS
11732 ROCK LANDING DRIVE, SUITE 203
NEWPORT NEWS, VIRGINIA 23606
(757) 873-3386

- LEGEND**
- PROPERTY BOUNDARY LINE
 - - - PHASE LINE
 - ▨ UNIT AREA
 - ▤ LIMITED COMMON ELEMENT
 - COMMON ELEMENT



PLAT RECORDED IN
D.B. NO. 804 PAGE 740-743

Recorded 4 days of 09/28/99
DOCUMENT # 206269/3 11/3/99
W. Page Cockrell