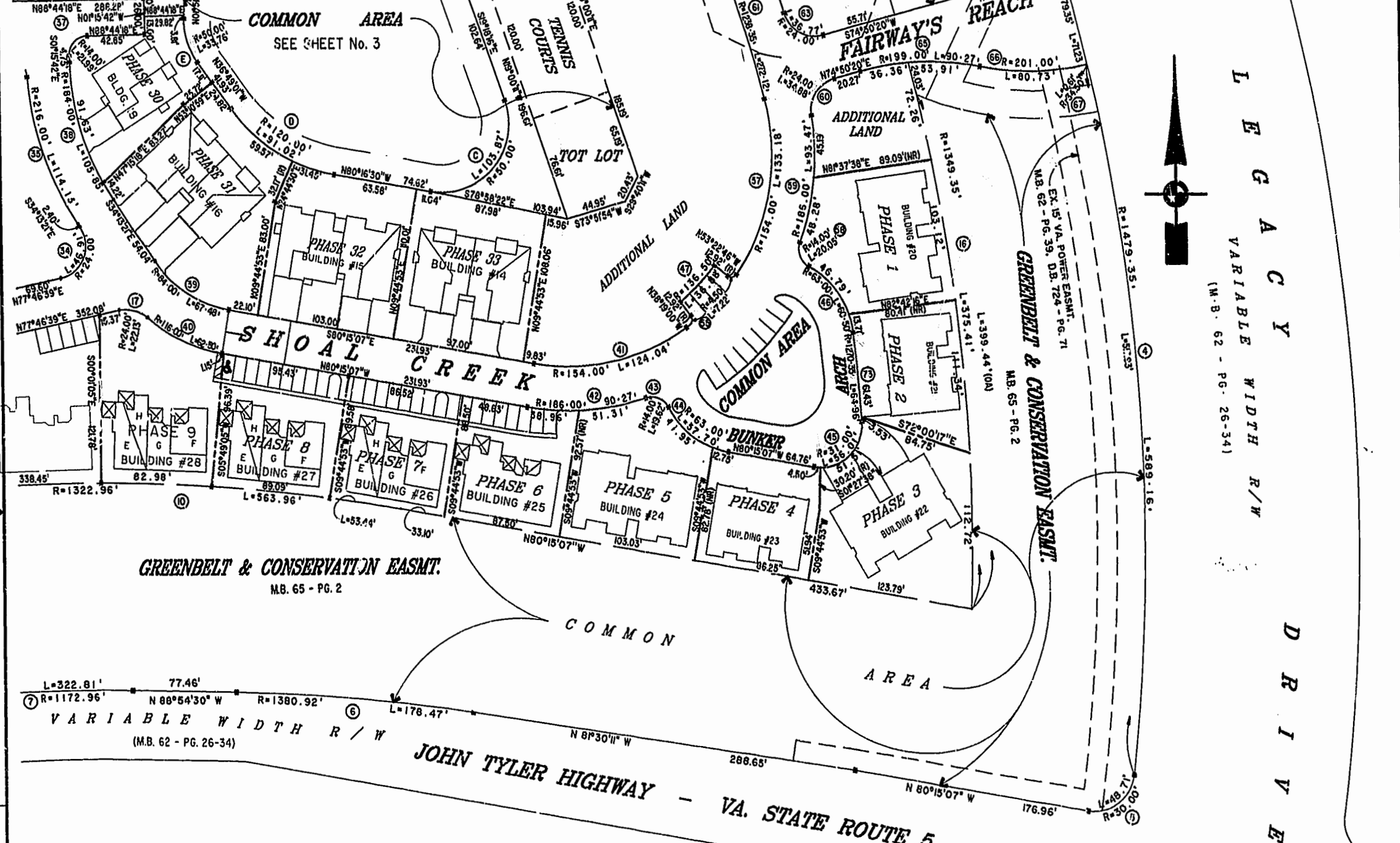


MATCH LINE - SEE SHEET 4

MATCH LINE - SEE SHEET 3



LEGACY
 VARIABLE WIDTH R/W
 (M.B. 62 - PG. 26-34)

DRIVE

GREENBELT & CONSERVATION EASMT.
 M.B. 65 - PG. 2

L=322.81' 77.46'
 R=1172.96' N 88°54'30" W R=1380.92'
VARIABLE WIDTH R/W
 (M.B. 62 - PG. 26-34)

JOHN TYLER HIGHWAY - VA. STATE ROUTE 5

11:55 AM
 Recorded 29 Oct 1999
 DOCUMENT 96 02 20580
 [Signature]

PLAN RECORDED
 P.D. NO. 74 PAGE 1-86



**EXHIBIT "A" PHASE 38
 FAIRWAYS VILLAS
 AT
 GREENSPRINGS, A CONDOMINIUM
 FOR
 GREENSPRINGS DEVELOPMENT, L.C.
 BERKELEY DISTRICT JAMES CITY COUNTY, VIRGINIA**

Hassell & Folkes, P.C. Engineers, Surveyors, Planners Chesapeake, VA. 23320 (757) 547-9531	SIZE	CONTRACT NO	DISK/BOX	FILENAME	REV.
	C	95-079	5M/16	FAIRWAY38.DWG	
SCALE: 1"=50'		DATE: 07/14/99	REF: 19/13	FWAYPLAT.DWG	