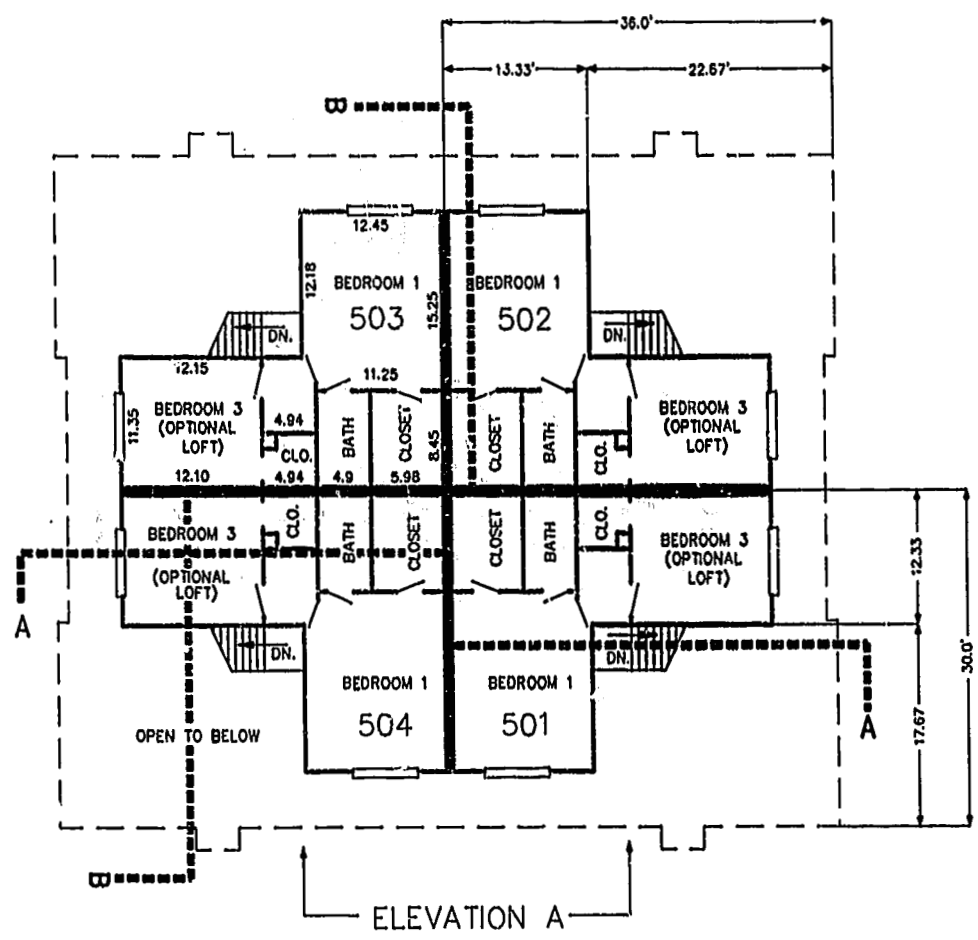


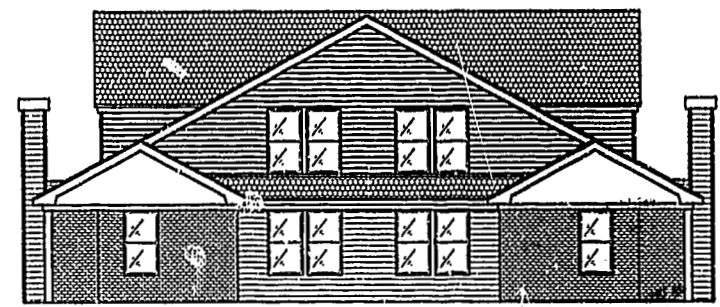
FIRST FLOOR PLAN  
(UNIT 503 IS TYPICAL EXCEPT WHERE NOTED)



SECOND FLOOR PLAN  
(UNIT 503 IS TYPICAL)

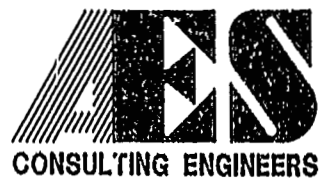


ELEVATION A



ELEVATION B

PLAT RECORDED BY  
P.B. NO. 29 FROM 70-75



5248 Olde Towne Road, Suite 1  
Williamsburg, Virginia 23188  
(757) 253-0040  
Fax (757) 220-8994

PLAT OF CONDOMINIUM  
WESTGATE AT WILLIAMSBURG,  
A CONDOMINIUM  
PHASE FOUR  
OWNED BY: 752 L.L.C.,  
A VIRGINIA LIMITED LIABILITY COMPANY  
CITY OF WILLIAMSBURG VIRGINIA



No.	DATE	REVISION / COMMENT / NOTE	BY

Designed GTW/ADS	Drawn JFS
Scale 1" = 10'	Date 8/25/99
Project No. 8395-6	
Drawing No. 5 OF 6	

08.27.99-14:21 8395pl-45.dwg JFS