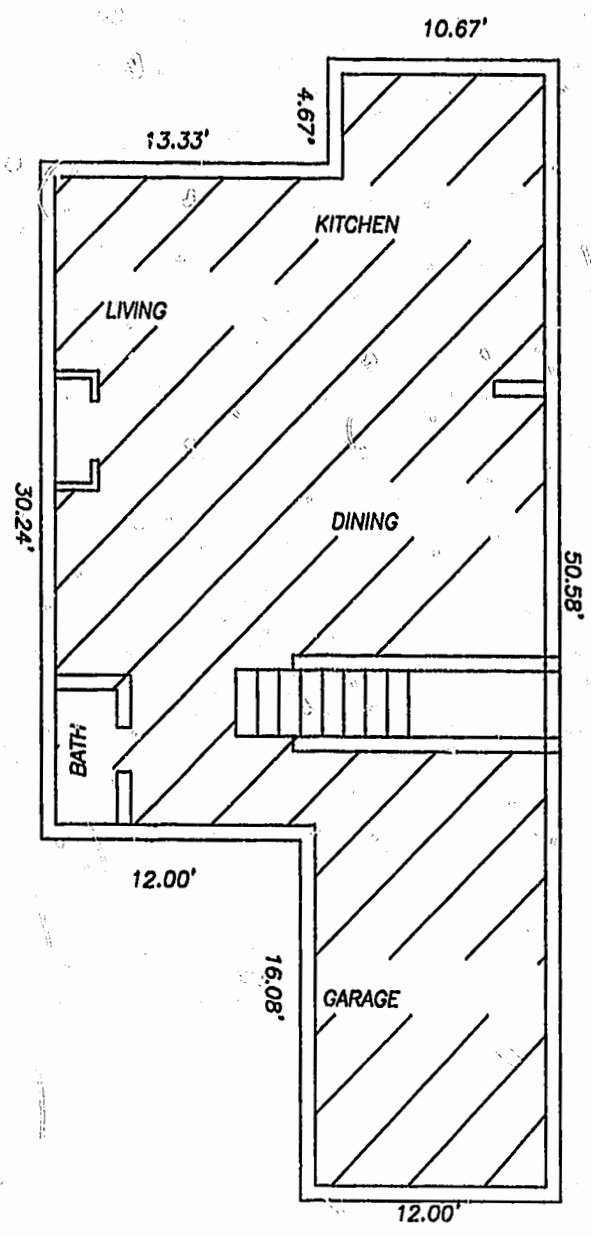
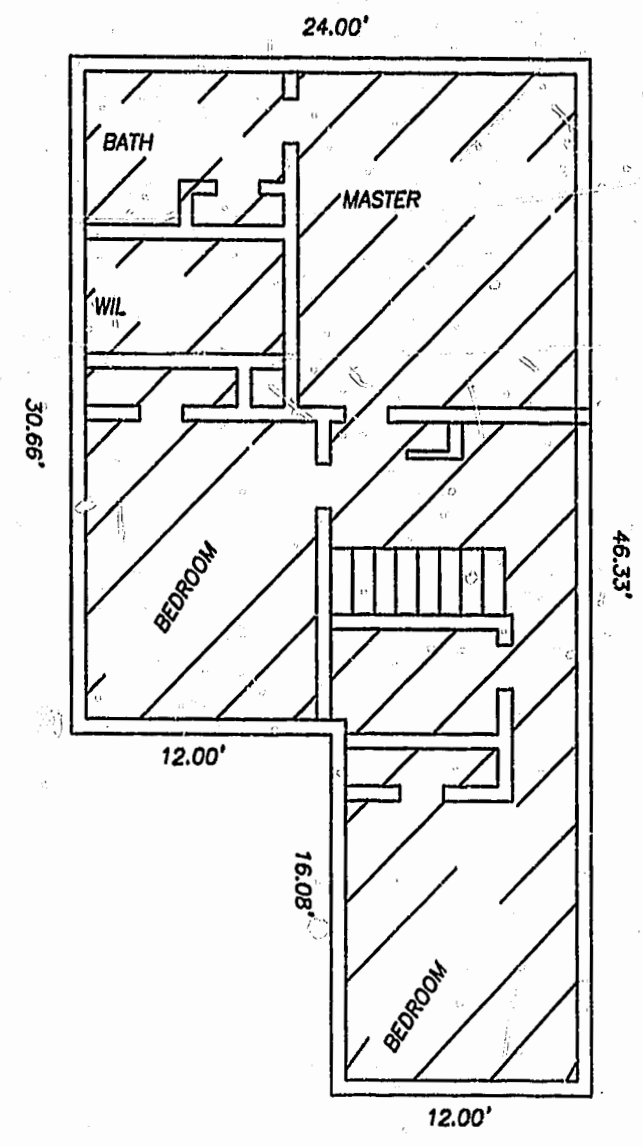


NOTES:

1. ALL BUILDING DIMENSIONS AND INTERIOR DIMENSIONS ARE IN FEET.
2. THE PORTION OF THE IMPROVEMENTS DESIGNATED AS A UNIT IS SUBJECT TO THE DEFINITION OF THE TERM "UNIT" IN THE DECLARATION, EXTERIOR WALLS, DIVIDING WALLS BETWEEN UNITS, AND COLUMNS OR LOAD BEARING MEMBERS WHICH SUPPORT MORE THAN ONE UNIT ARE NOT PART OF THE UNIT.
3. INTERIOR UNIT CONFIGURATIONS AND PARTITIONS AS DEPICTED HEREON ARE FOR ILLUSTRATION ONLY AND MAY NOT REPRESENT THE INTERIOR OF A UNIT AS ACTUALLY BUILT.



MODEL C
FIRST FLOOR

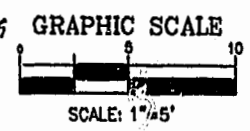


MODEL C
SECOND FLOOR

LEGEND
 UNIT AREA

1:48 pm
 recorded 21 Aug 1999
 DOCUMENT # 95-02-15881
 Andrew S. Washburn
 By Claudia Adickes
 Sp. Clerk

PLAT RECORDED
 P.B. NO. 74 PART 59-63



THE UNDERSIGNED CERTIFIES THAT THESE PLANS ARE ACCURATE AND COMPLY WITH THE PROVISIONS OF CODE OF VIRGINIA, SECTION 55-79.5BB AND THAT ALL UNITS OR PORTIONS THEREOF DEPICTED HEREON AND ALL COMMON ELEMENTS HAVE BEEN SUBSTANTIALLY COMPLETED.

SIGNED:
 W. PAGE COCKRELL, L.S.

EXHIBIT B-1

SUPPLEMENTAL CONDOMINIUM PLAN OF CROMWELL RIDGE CONDOMINIUMS		
JAMES CITY COUNTY, VIRGINIA		
DATE: 8/4/99	SHEET 5 OF 5	SCALE: 1"=5'
PROJECT NO: 97-003	DRAWN BY: SAA	
SLEDD & ASSOCIATES, P.C. ENGINEERS PLANNERS SURVEYORS 11832 ROCK LANDING DRIVE, SUITE 203 NEWPORT NEWS, VIRGINIA 23606 (757) 673-3586		