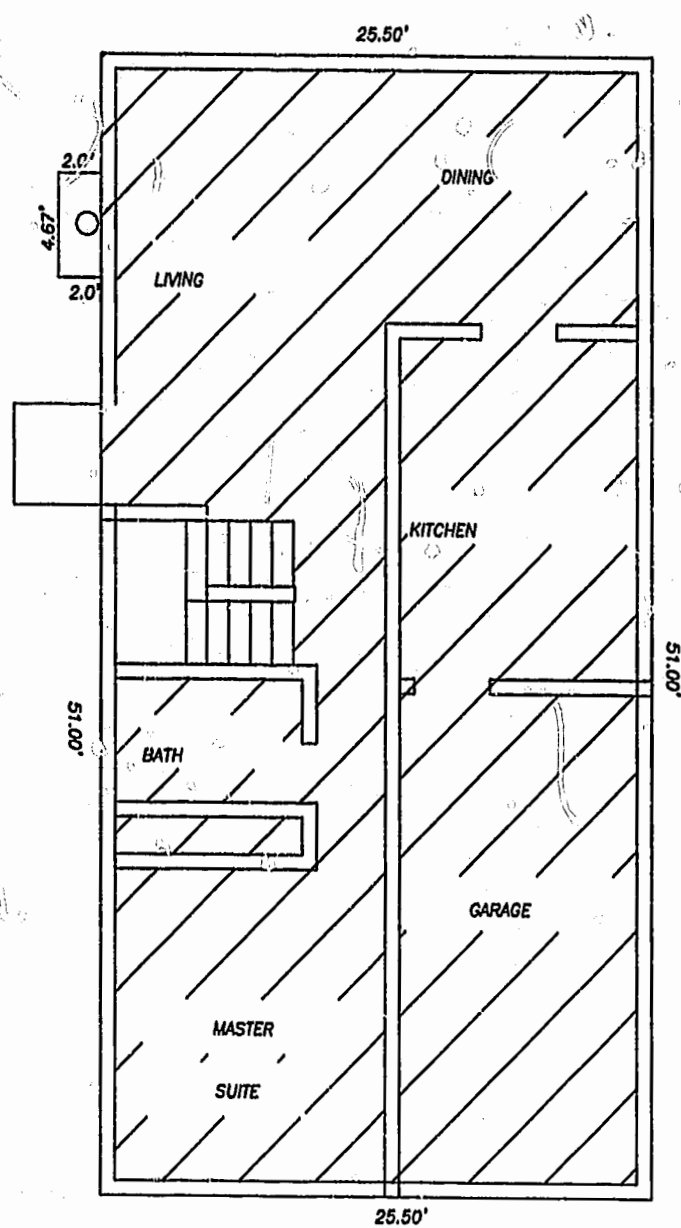
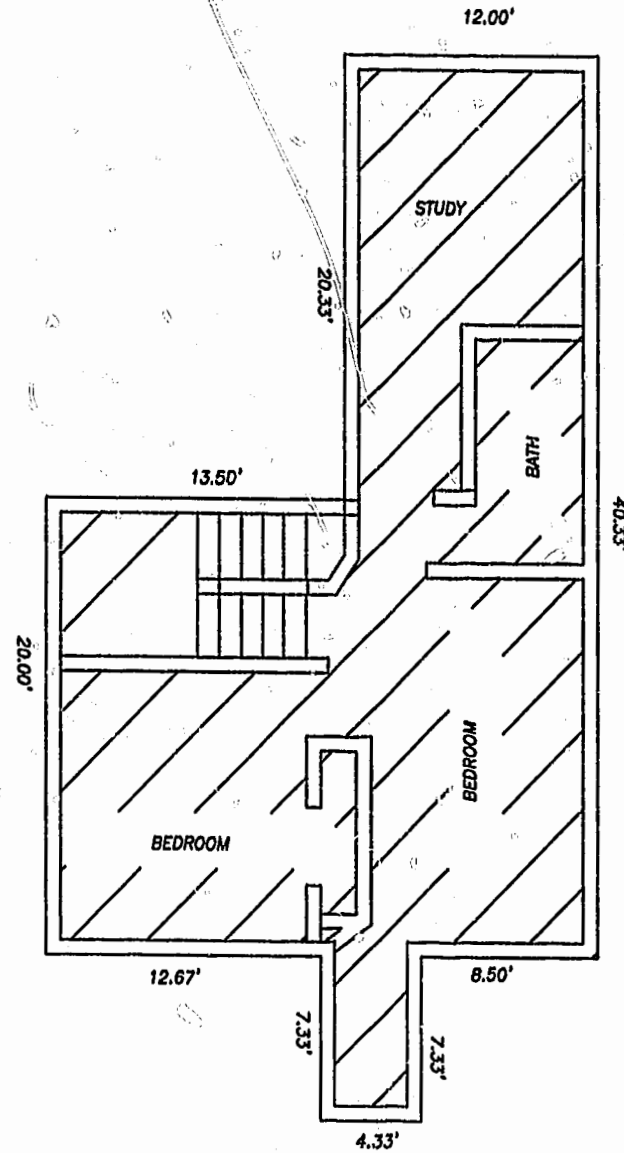


NOTES:

- 1. ALL BUILDING DIMENSIONS AND INTERIOR DIMENSIONS ARE IN FEET.
- 2. THE PORTION OF THE IMPROVEMENTS DESIGNATED AS A UNIT IS SUBJECT TO THE DEFINITION OF THE THE TERM "UNIT" IN THE DECLARATION, EXTERIOR WALLS, DIVIDING WALLS BETWEEN UNITS, AND COLUMNS OR LOAD BEARING MEMBERS WHICH SUPPORT MORE THAN ONE UNIT ARE NOT PART OF THE UNIT.
- 3. INTERIOR UNIT CONFIGURATIONS AND PARTITIONS AS DEPICTED HEREON ARE FOR ILLUSTRATION ONLY AND MAY NOT REPRESENT THE INTERIOR OF A UNIT AS ACTUALLY BUILT.



MODEL D  
FIRST FLOOR



MODEL D  
SECOND FLOOR



THE UNDERSIGNED CERTIFIES THAT THESE PLANS ARE ACCURATE AND COMPLY WITH THE PROVISIONS OF CODE OF VIRGINIA, SECTION 55-79.5B.B AND THAT ALL UNITS OR PORTIONS THEREOF DEPICTED HEREON AND ALL COMMON ELEMENTS HAVE BEEN SUBSTANTIALLY COMPLETED.

SIGNED: *W. Page Cockrell*  
W. PAGE COCKRELL, L.S.

EXHIBIT B-1

PLAT RECORDED  
P.S. NO. 74 PAGE 52-63

LEGEND  
 UNIT AREA

1:48 P.M.  
 Recorded *Sept. 1999* GRAPHIC SCALE  
 DOCUMENT # *99-0315281*  
*William S. Williams*  
*By Claudia J. Hart, L.S.*  
 SCALE: 1"=5'

**SUPPLEMENTAL CONDOMINIUM PLAN OF CROMWELL RIDGE CONDOMINIUMS**  
 JAMES CITY COUNTY, VIRGINIA

DATE: 8/4/99	SHEET 4 OF 5	SCALE: 1"=5'
PROJECT NO: 97-003	DRAWN BY: SAA	

**SA SLEDD & ASSOCIATES, P.C.**  
 ENGINEERS PLANNERS SURVEYORS  
 11832 ROCK LANDING DRIVE, SUITE 203  
 NEWPORT NEWS, VIRGINIA 23606  
 (757) 873-3388