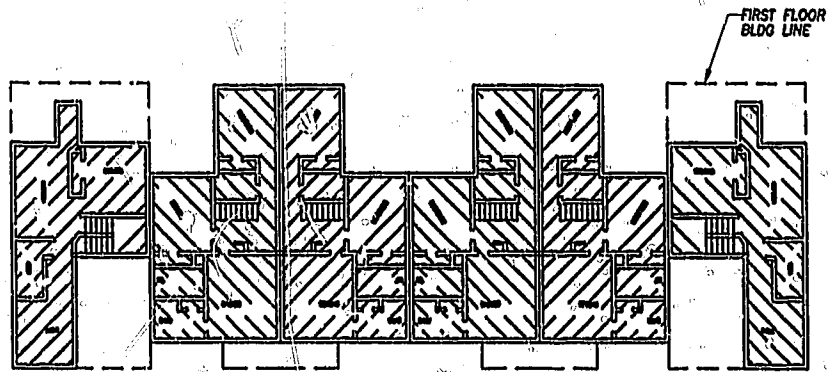
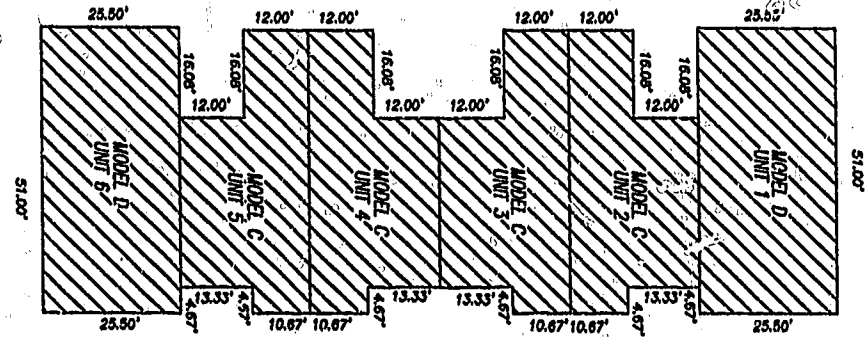


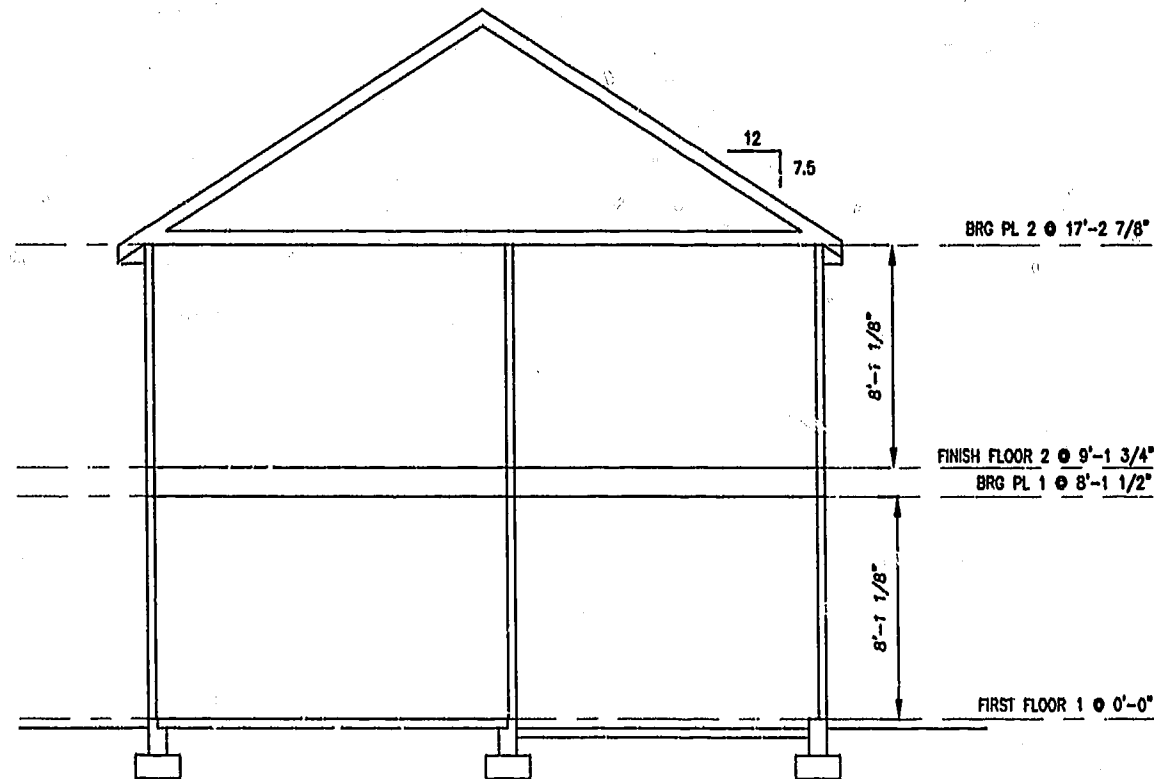
NOTE: 74 INC 61
 ALL BUILDING DIMENSIONS SHOWN ARE EXTERIOR DIMENSIONS



SECOND FLOOR



FIRST FLOOR



TYPICAL BUILDING SECTION



THE UNDERSIGNED CERTIFIES THAT THESE PLANS ARE ACCURATE AND COMPLY WITH THE PROVISIONS OF CODE OF VIRGINIA, SECTION 55-79.58.B AND THAT ALL UNITS OR PORTIONS THEREOF DEPICTED HEREON AND ALL COMMON ELEMENTS HAVE BEEN SUBSTANTIALLY COMPLETED.

SIGNED: *W. Page Cockrell*
 W. PAGE COCKRELL, L.S.

EXHIBIT B-1

PLAN RECORDED IN
 P.B. NO. 11, PAGE 59-63

LEGEND

UNIT AREA

GRAPHIC SCALE



SCALE: 1"=20'

*Recorded at 1995
 DOCUMENT # 990219801
 Helen S. Wilkerson
 By Claudia St. Bernhart
 Sp. Clerk*

SUPPLEMENTAL CONDOMINIUM PLAT
 OF

CROMWELL RIDGE CONDOMINIUMS

JAMES CITY COUNTY, VIRGINIA

DATE: 8/4/99 SHEET 3 OF 5 SCALE: 1"=20'
 PROJECT NO: 97-003 DRAWN BY: SAA



SLEDD & ASSOCIATES, P.C.
 ENGINEERS PLANNERS SURVEYORS
 11832 RUCK LANDING DRIVE, SUITE 203
 NEWPORT NEWS, VIRGINIA 23606
 (757) 873-3386