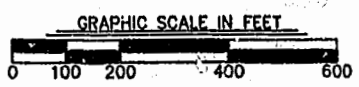


AMENDED PLAT
SHOWING
RELOCATION OF ACCESS EASEMENT
FOR
LEGACY (GREENSPRINGS) LIMITED PARTNERSHIP
A VIRGINIA LIMITED PARTNERSHIP
AND
JAMESTOWN, L.L.C.
BERKELEY DISTRICT JAMES CITY COUNTY, VIRGINIA
DATE: 5/27/99 SCALE: 1"=200'
SHEET 4 OF 5

Langley and McDonald, P.C.
Engineers Surveyors Planners
Landscape Architects Environmental Consultants
VIRGINIA BEACH WILLIAMSBURG



MATCHLINE SEE SHEET 2

N 3442° 07' 00" E 3492.13.669 (NAD83)
15' VIRGINIA ELECTRIC AND POWER COMPANY EASEMENT (D.B. 40, PG. 331)
RELOCATED SR 6H ROAD CENTERLINE
 $\Delta = 30'10'25"$
 $R = 1967.00'$
 $T = 530.25'$
 $C = 1036.87'$
 $CB = N18'19'51"W$

S-1A FORMERLY S-1, S-2 & S-4 (AS DESIGNATED ON APPROVED MASTER PLAN)
NEW 30' ACCESS AND UTILITY EASEMENT

EXIST. EASEMENT HEREBY EXTINGUISHED
NEW VARIABLE WIDTH ACCESS & UTILITY EASEMENT

N43°29'04"E 41.88'
S87°48'00"E 36.84'
N85°02'48"E 800.91'
S58°23'52"W 55.00'
S87°44'06"E 74.08'
S74°44'34"E 111.61'
R=85.00'
L=232.92'

N/F LEGACY LIMITED PARTNERSHIP DB.678, PG.175 PARCEL A 10.0789 ACRES
791.46'
S72°13'24"W

$\Delta = 18'15'29"$
 $R = 1833.00'$
 $T = 294.55'$
 $L = 584.11'$
 $C = 581.64'$
 $CB = N 12'22'23" W$

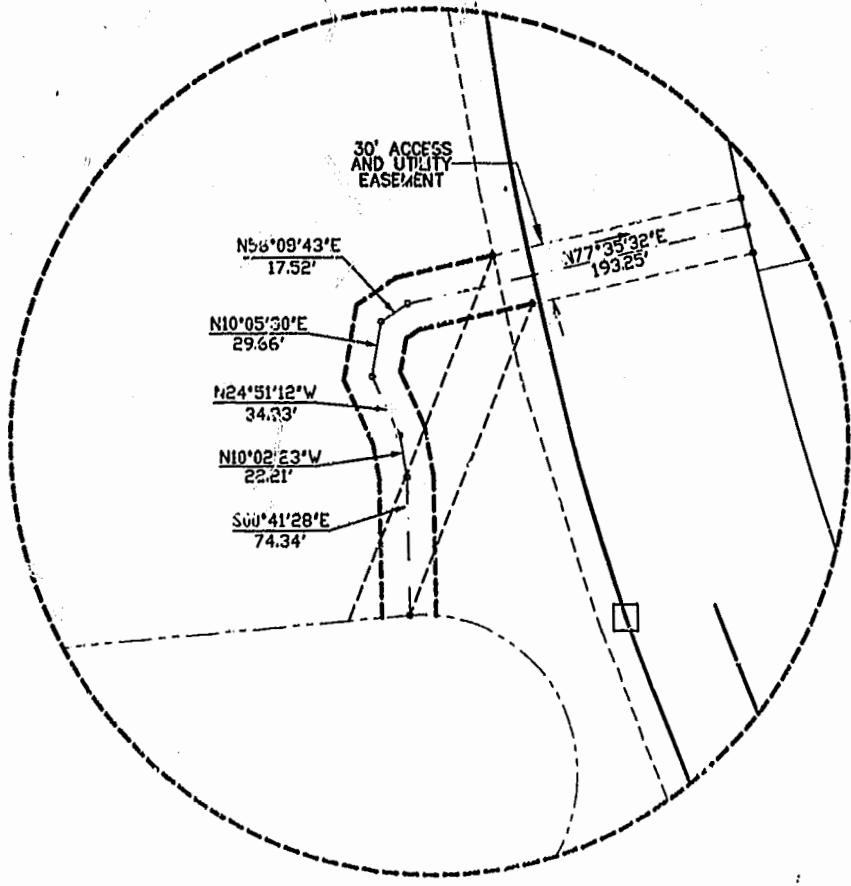
SEE DETAIL
MONTICELLO AVENUE

U.S.A. GREENSPRINGS PLANTATION NATIONAL HISTORIC SITE

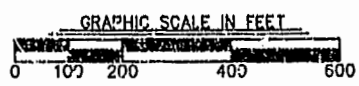
N 3429° 02' 63" E 3493.187.861 (NAD83)

U.S.A. GREENSPRINGS PLANTATION NATIONAL HISTORIC SITE

FUTURE GREENSPRINGS PLANTATION MONTICELLO AVENUE (ALTERNATE ROUTE 5)



DETAIL
N.T.S.



3:36 p.m.
Recorded 15th day of September, 1999
DOCUMENT # 99-00-11-30
Mylene S. Hill, Clerk

PLAN RECORDED
P.M. NO. 114 PAGE 51/51

102200W