

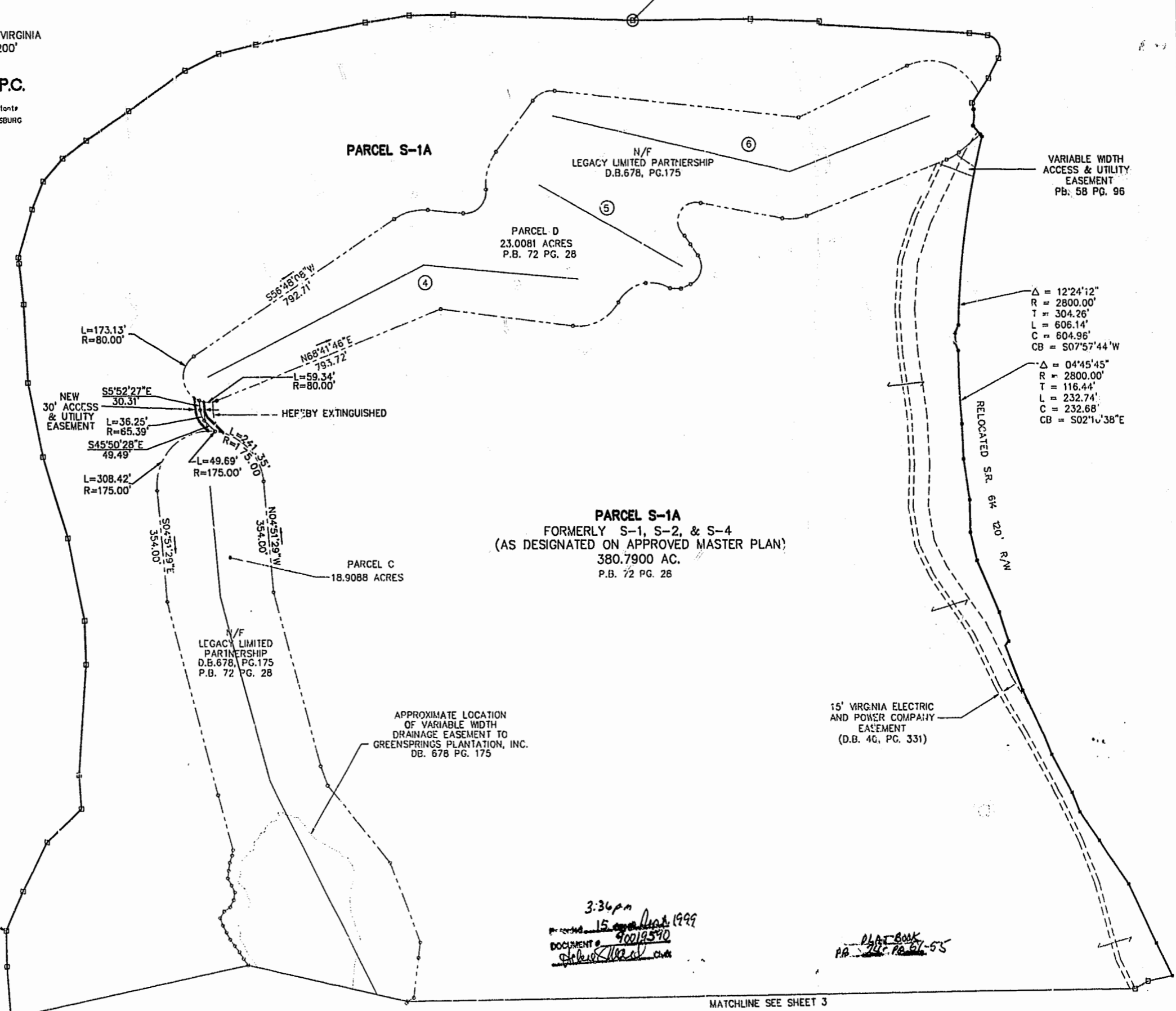
AMENDED PLAT
 SHOWING
 RELOCATION OF ACCESS EASEMENT
 FOR
 LEGACY (GREENSPRINGS) LIMITED PARTNERSHIP
 A VIRGINIA LIMITED PARTNERSHIP
 AND
 JAMESTOWN, L.L.C.
 BERKELEY DISTRICT JAMES CITY COUNTY, VIRGINIA
 DATE: 5/27/99 SCALE: 1"=200'
 SHEET 2 OF 5



BRICK BAT ROAD STATE ROUTE 813
 30' R/W

N 3623563.613
 E 11971239.481
 (NAD83)

74 INC 52



Δ = 12'24'12"
 R = 2800.00'
 T = 304.26'
 L = 606.14'
 C = 604.96'
 CB = S07'57'44"W

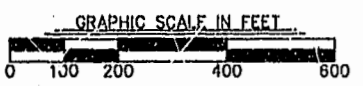
Δ = 04'45'45"
 R = 2800.00'
 T = 116.44'
 L = 232.74'
 C = 232.68'
 CB = S02'10'38"E

PARCEL S-1A
 FORMERLY S-1, S-2, & S-4
 (AS DESIGNATED ON APPROVED MASTER PLAN)
 380.7900 AC.
 P.B. 72 PG. 28

N344437.022
 E2489018.359

3:36 pm
 15 May 1999
 DOCUMENT # 90019590
 [Signature]

PLAT BOOK
 PA 74C PG 51-55



MATCHLINE SEE SHEET 3