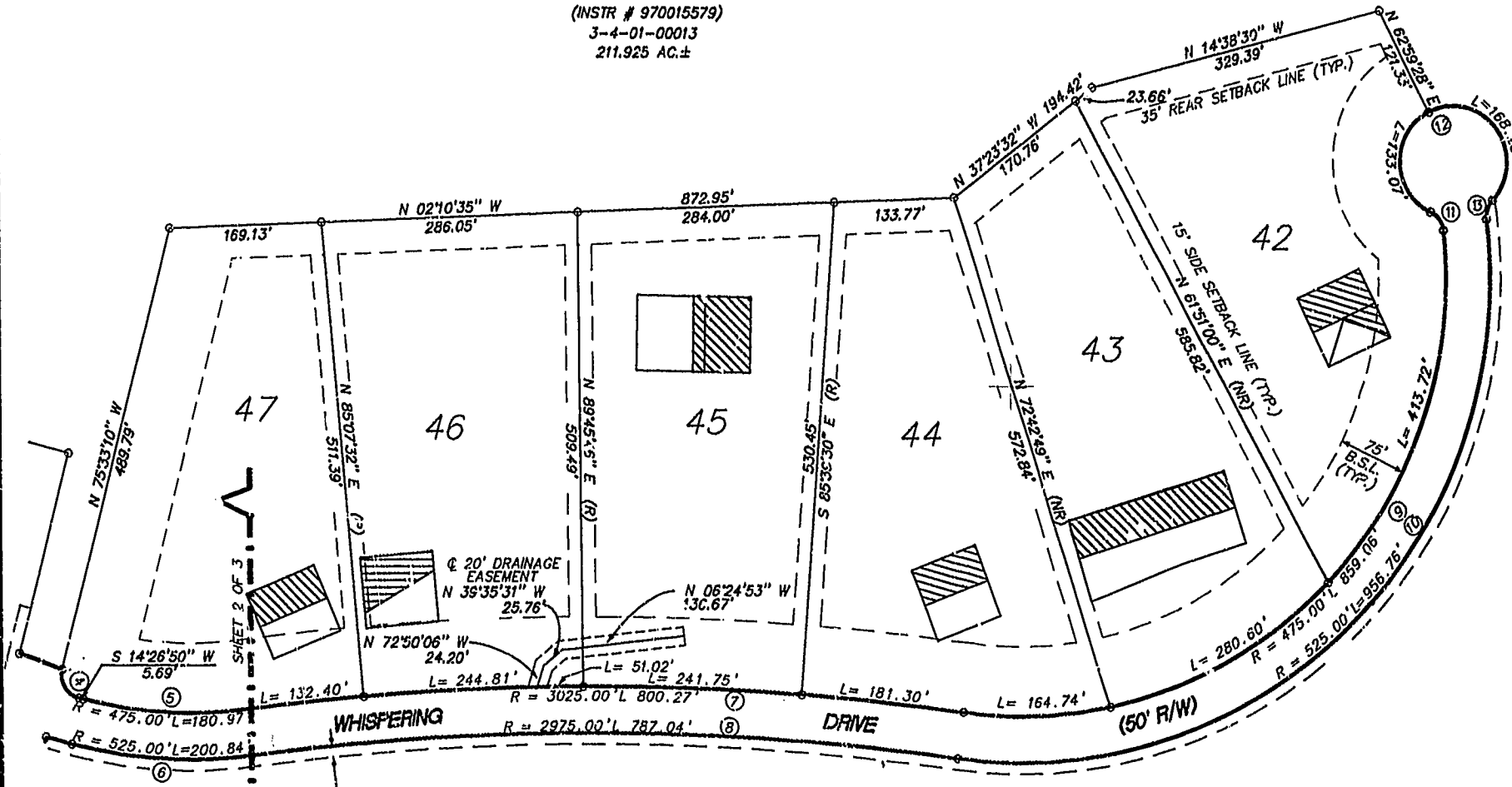


SUBDIVISION PLAT
OF
THE RETREAT
PHASE ONE, SECTION ONE
FOR
LHIW-3, LLC
STONEHOUSE DISTRICT
JAMES CITY COUNTY, VIRGINIA
MAY 17 1999, SHEET 3 OF 3



SEE NOTE 1 ON SHEET 1 OF 3

RESIDUAL PARCEL
PROPERTY OF LHIW-3, LLC
(INSTR # 970015579)
3-4-01-00013
211.925 AC.±

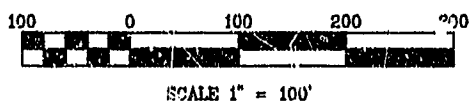


LEGEND

PRIMARY DRAIN FIELD

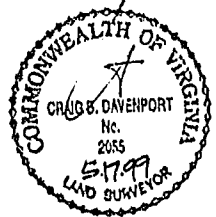
RESERVE DRAIN FIELD

- NOTE:**
- UNLESS OTHERWISE NOTED ALL DRAINAGE EASEMENTS ARE TO BE PRIVATELY MAINTAINED.
 - ALL STREETS ARE HEREBY DEDICATED FOR PUBLIC USE.



PLAT RECORDED IN
P.B. NO. 44, PAGE 44-46

RESIDUAL PARCEL
PROPERTY OF LHIW-3, LLC
(INSTR # 970015579)
3-4-01-00013
211.925 AC.±



1:40 pm
Recorded 31 day of Aug 1999
DOCUMENT # 990015579
Helena S. Ward, Clerk of Circuit Court
By: Dawn R. Mates, Dep. Clerk

STATE OF VIRGINIA
COUNTY OF JAMES CITY
IN THE CLERK'S OFFICE OF THE CIRCUIT COURT FOR THE COUNTY
OF JAMES CITY THE 31st DAY OF August, 1999 THIS
MAP WAS PRESENTED AND ADMITTED TO RECORD AS THE LAW
DIRECTS IN PLAT BOOK 74 PAGE 44-46

TESTE: Helena S. Ward, Clerk of Circuit Court
Dawn R. Mates, Dep. Clerk

Rickmond Engineering, Inc.

1643 Merrimac Trail
Williamsburg, VA 23185
Voice: (757)229-1776
Fax: (757)229-4683
www.rickmond.com

Engineering
Surveying
Land Planning

| | | | |
|-----------------------|---------------------|-------------------|------------------|
| Checked By: C.B.D. | Drawn By: M.C.G. | Scale: 1"=100' | Date: 5/17/99 |
|-----------------------|---------------------|-------------------|------------------|

SEE SHEET 1 OF 3 FOR NOTES AND CERTIFICATIONS
SEE SHEET 2 OF 3 FOR CURVE TABLES AND LOT AREA TABLES