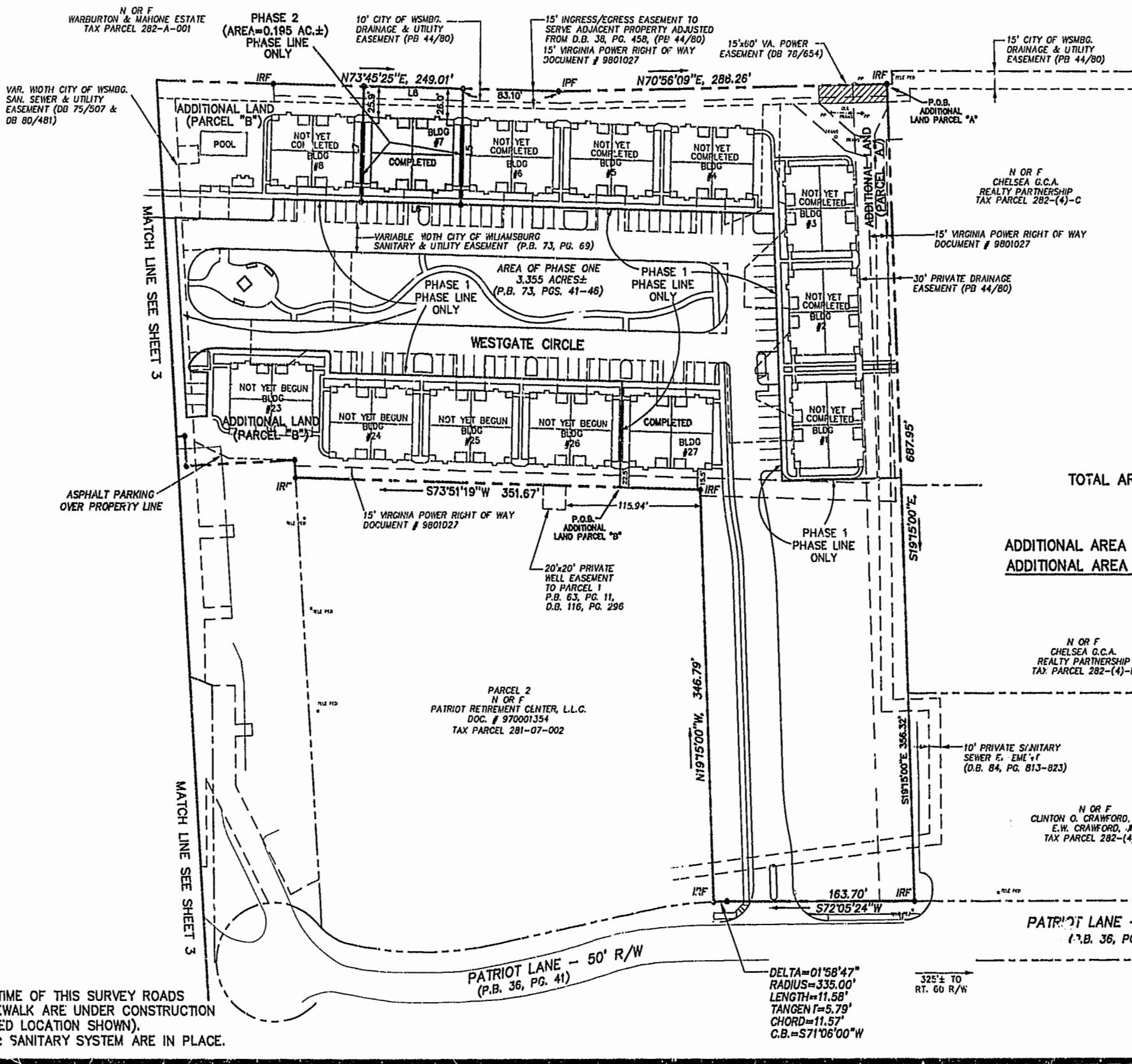


RECORD MERIDIAN
PLAT BOOK 63, PAGE 11



PHASE 2 LINE TABLE

NUMBER	BEARING	DISTANCE
L5	S16°08'41\"E	97.83'
L6	S73°51'19\"W	87.00'
L7	N16°08'41\"W	97.68'
L8	N73°45'25\"E	87.00'

AREA

TOTAL AREA PARCEL 1=	11.913 AC±
PHASE TWO=	0.195 AC±
PHASE ONE=	3.355 AC±
ADDITIONAL AREA (PARCEL "A")=	1.412 AC±
ADDITIONAL AREA (PARCEL "B")=	6.951 AC±
TOTAL=	11.913 AC±



5248 Olde Towne Road, Suite 1
Williamsburg, Virginia 23188
(757) 253-0040
Fax (757) 220-8994

PLAT OF CONDOMINIUM
WESTGATE AT WILLIAMSBURG,
A CONDOMINIUM
PHASE TWO
OWNED BY: 752 L.L.C.,
A VIRGINIA LIMITED LIABILITY COMPANY
CITY OF WILLIAMSBURG VIRGINIA



No.	DATE	REVISION / COMMENT / NOTE	BY
		PLAT RECORDED IN P.B. NO. 74 PAGE 36-30	
		Recorded 25 day of August 1999 DOCUMENT # 991102 3:07	
		Helene S. Ward, Clerk of Circuit Court, Clerk Ref. Dawn R. Matlock, Dep. Clerk	

Designed GTW/ADS	Drawn JFS
Scale 1" = 60'	Date 8/16/99
Project No. 8395-6	
Drawing No. 2 OF 6	

NOTE:
AT THE TIME OF THIS SURVEY ROADS
AND SIDEWALK ARE UNDER CONSTRUCTION
(PROPOSED LOCATION SHOWN).
WATER & SANITARY SYSTEM ARE IN PLACE.

08.24.99-10.45 8395P42.DWG

RICHMOND ROAD - U.S. ROUTE 60
TO RICHMOND

TO WILLIAMSBURG