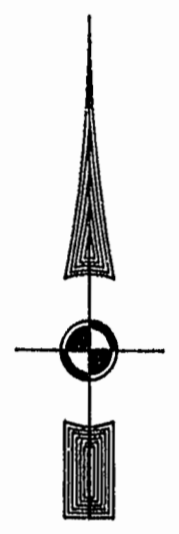


EXIST. 20' JAMES CITY COUNTY SERVICE AUTHORITY SAN. SEWER EASEMENT AS SHOWN IN AS-BUILT LOCATION. D.B. 141 - PG. 388

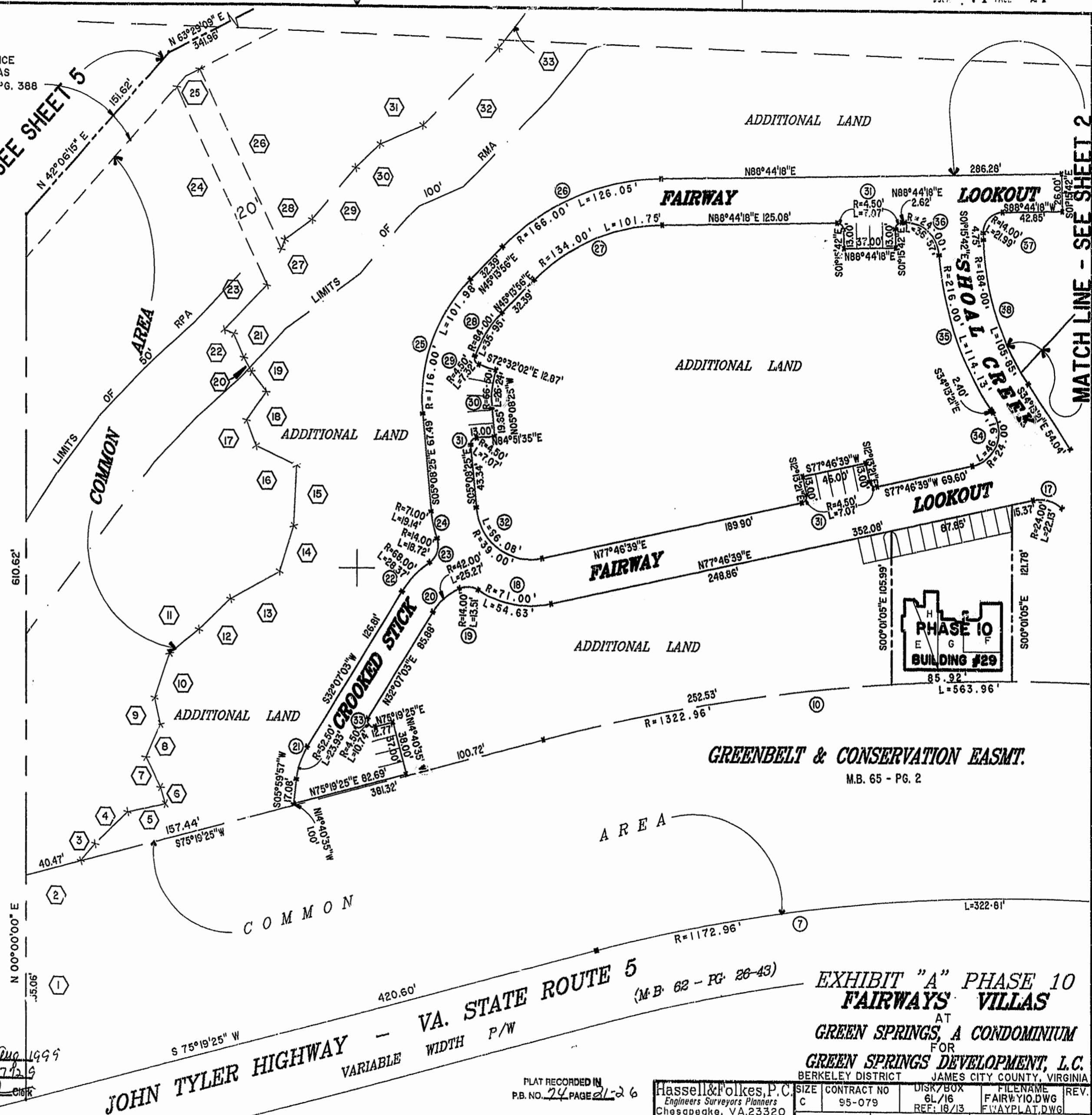


MATCH LINE - SEE SHEET 5

46-1-01-0-0001  
"GREENSPRINGS PLANTATION"  
(DB 322, PG 254)



3:23 PM  
Recorded 18 day of Aug 1999  
DOCUMENT # 29 0217 19  
GJR



MATCH LINE - SEE SHEET 2

JOHN TYLER HIGHWAY - VA. STATE ROUTE 5  
VARIABLE WIDTH P/W

GREENBELT & CONSERVATION EASMT.  
M.B. 65 - PG. 2

EXHIBIT "A" PHASE 10  
FAIRWAYS VILLAS  
AT  
GREEN SPRINGS, A CONDOMINIUM  
FOR  
GREEN SPRINGS DEVELOPMENT, L.C.  
BERKELEY DISTRICT JAMES CITY COUNTY, VIRGINIA

PLAT RECORDED IN  
P.B. NO. 74 PAGE 21-26

Hassell & Folkes, P.C.  
Engineers Surveyors Planners  
Chesapeake, VA. 23320  
(757) 547-9531

SIZE	CONTRACT NO	DISK/BOX	FILENAME	REV.
C	95-079	6L/16	FAIRWAY10.DWG	
SCALE:	DATE:	REF:	FILENAME	REV.
1"=50'	07/02/99	18/13	FWAYPLAT.DWG	