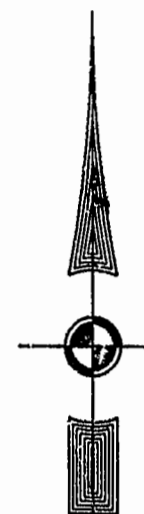
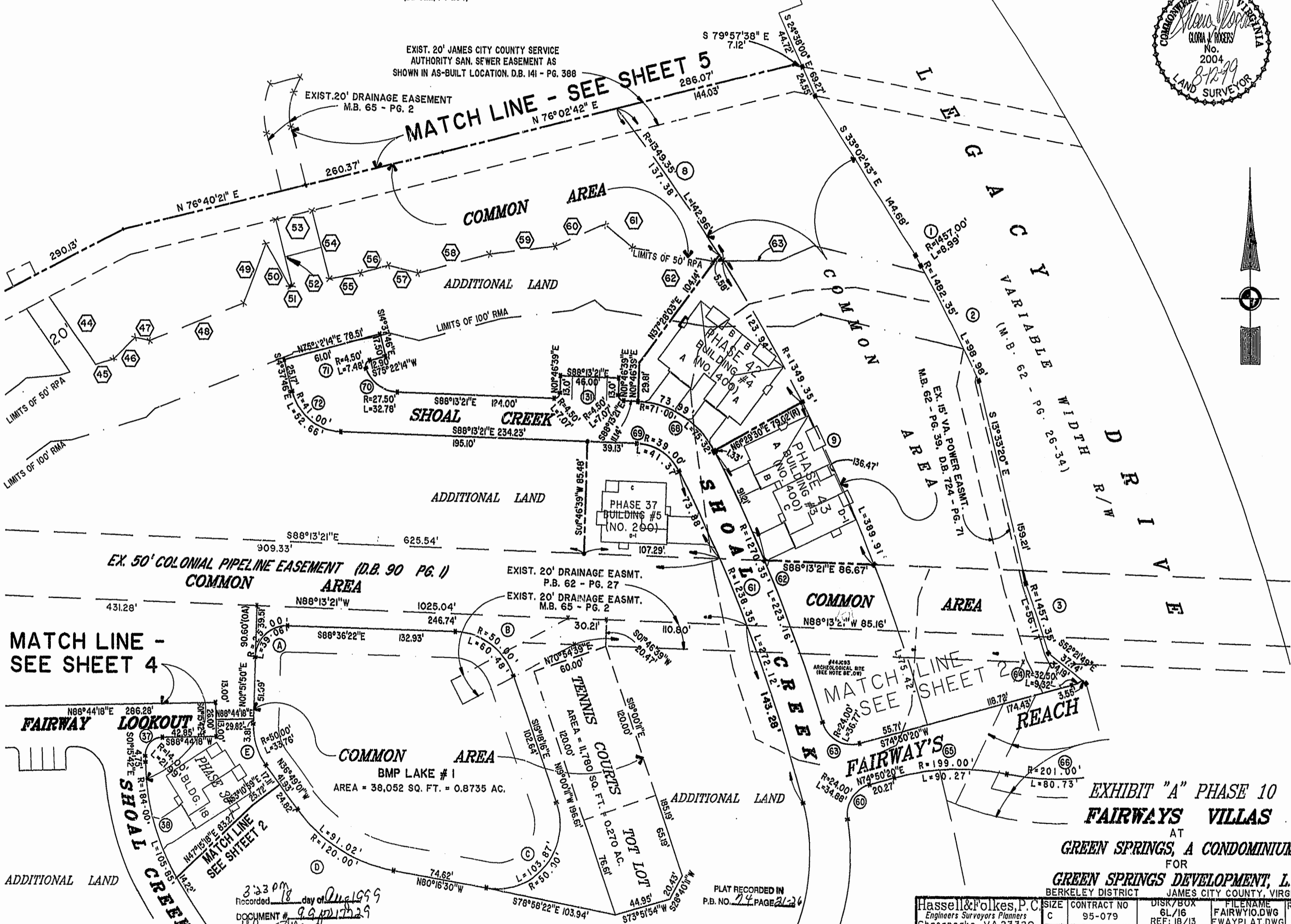
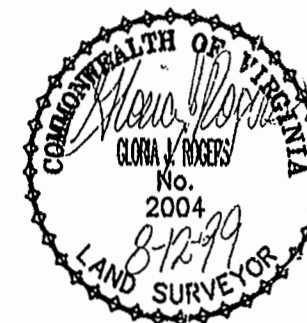


46-1-01-0-0001  
"GREENSPRINGS PLANTATION"  
(DB 322, PG 254)

EXIST. 20' JAMES CITY COUNTY SERVICE  
AUTHORITY SAN. SEWER EASEMENT AS  
SHOWN IN AS-BUILT LOCATION, D.B. 141 - PG. 388

EXIST. 20' DRAINAGE EASEMENT  
M.B. 65 - PG. 2

MATCH LINE - SEE SHEET 5



EX. 50' COLONIAL PIPELINE EASEMENT (D.B. 90 PG. 1)  
COMMON AREA

MATCH LINE -  
SEE SHEET 4

MATCH LINE  
SEE SHEET 2

EXHIBIT "A" PHASE 10  
FAIRWAYS VILLAS  
AT  
GREEN SPRINGS, A CONDOMINIUM  
FOR  
GREEN SPRINGS DEVELOPMENT, L.C.  
BERKELEY DISTRICT JAMES CITY COUNTY, VIRGINIA

3:23 PM  
Recorded day of Aug 1999  
DOCUMENT # 99-011729  
Clerk

PLAT RECORDED IN  
P.B. NO. 74 PAGE 21-26

Hassell & Folkes, P.C. Engineers Surveyors Planners Chesapeake, VA 23320 (757) 547-9531	SIZE C	CONTRACT NO 95-079	DISK/BOX 6L/16	FILENAME FAIRWY10.DWG	REV. REV. 18/13 FWAYPLAT.DWG
SCALE: 1" = 50'		DATE: 07/02/99		SHEET 3 of 6	