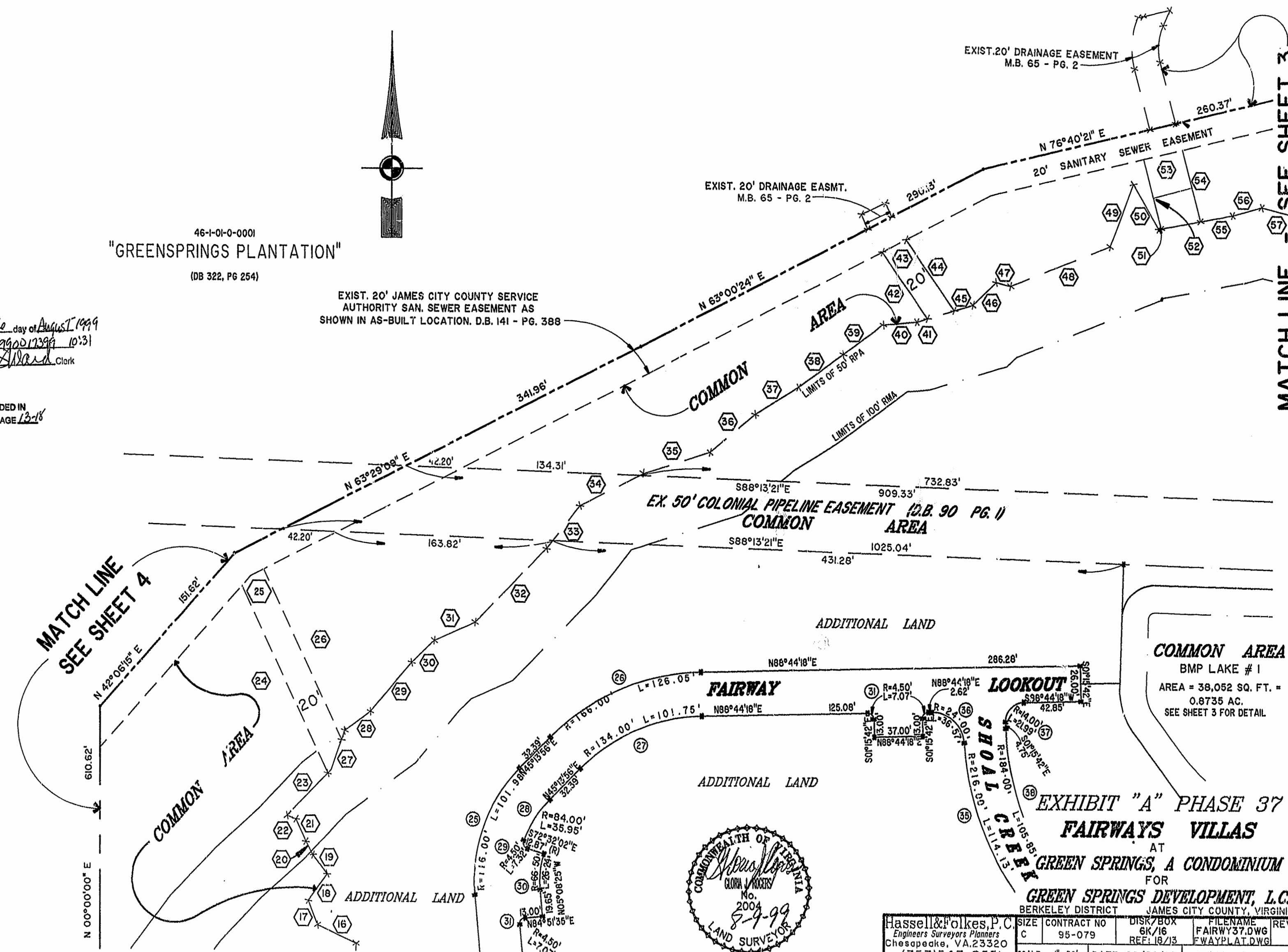


46-1-01-0-0001  
"GREENSPRINGS PLANTATION"  
(DB 322, PG 254)

EXIST. 20' JAMES CITY COUNTY SERVICE  
AUTHORITY SAN. SEWER EASEMENT AS  
SHOWN IN AS-BUILT LOCATION. D.B. 141 - PG. 388

Recorded 16 day of August 1999  
DOCUMENT # 990012399 10:31  
Debrae Shaver Clerk

PLAT RECORDED IN  
P.B. NO. 74 PAGE 13-18

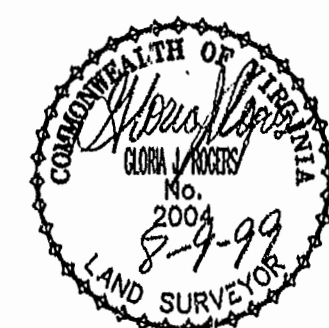


MATCH LINE  
SEE SHEET 4

MATCH LINE - SEE SHEET 3

**COMMON AREA**  
BMP LAKE # 1  
AREA = 38,052 SQ. FT. =  
0.8735 AC.  
SEE SHEET 3 FOR DETAIL

**EXHIBIT "A" PHASE 37  
FAIRWAYS VILLAS**  
AT  
**GREEN SPRINGS, A CONDOMINIUM**  
FOR  
**GREEN SPRINGS DEVELOPMENT, L.C.**  
BERKELEY DISTRICT JAMES CITY COUNTY, VIRGINIA



Hassell & Folkes, P.C. Engineers Surveyors Planners Chesapeake, VA 23320 (757) 547-9531	SIZE CONTRACT NO 6K/16 95-079	DISK/BOX 6K/16 REF: 18/13	FILENAME FAIRWY37.DWG FWAYPLAT.DWG	REV.
SCALE: 1" = 50'	DATE: 06/28/99	SHEET 5 of 6		