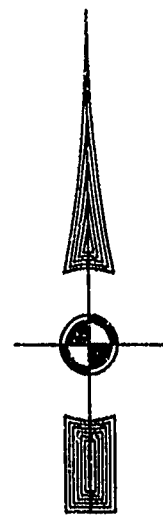
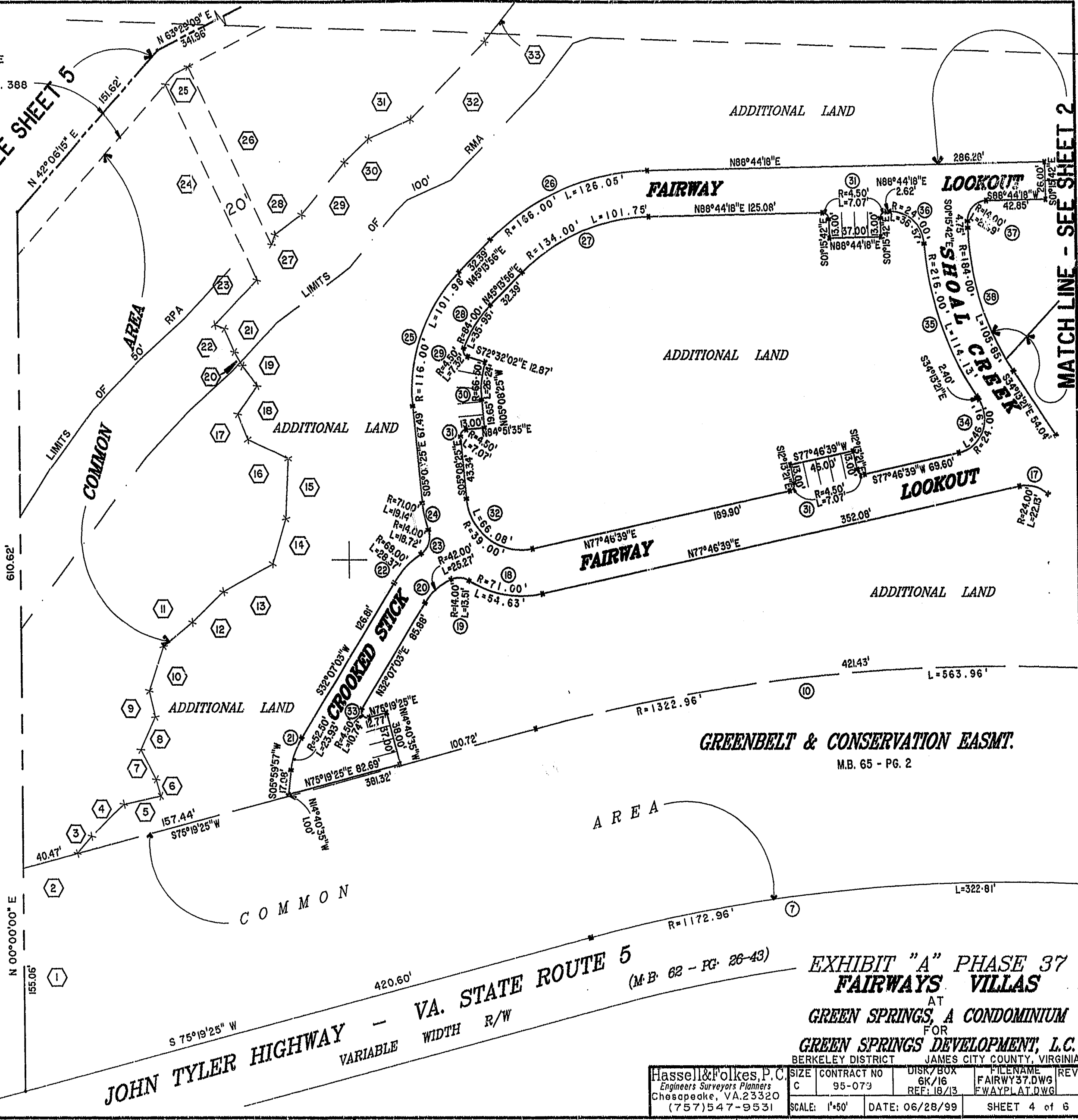


EXIST. 20' JAMES CITY COUNTY SERVICE AUTHORITY SAN. SEWER EASEMENT AS SHOWN IN AS-BUILT LOCATION, D.B. 141 - PG. 388



MATCH LINE - SEE SHEET 5

MATCH LINE - SEE SHEET 2



46-1-01-0-0001  
"GREENSPRINGS PLANTATION"  
(DB 322, PG 254)

PLAT RECORDED IN  
P.B. NO. 74 PAGE 13-18

Recorded 16 day of August 1999  
DOCUMENT # 990019399 10:31  
Valerie Swann Clerk



VA. STATE ROUTE 5 (M.B. 62 - PG. 26-43)  
JOHN TYLER HIGHWAY - VARIABLE WIDTH R/W

GREENBELT & CONSERVATION EASMT.  
M.B. 65 - PG. 2

EXHIBIT "A" PHASE 37  
FAIRWAYS VILLAS  
AT  
GREEN SPRINGS, A CONDOMINIUM  
FOR  
GREEN SPRINGS DEVELOPMENT, L.C.  
BERKELEY DISTRICT JAMES CITY COUNTY, VIRGINIA

|   |                                |                               |   |      |
|---|--------------------------------|-------------------------------|---|------|
| Hassell & Folkes, P.C.<br>Engineers Surveyors Planners<br>Chesapeake, VA. 23320<br>(757) 547-9531 | SIZE: C<br>CONTRACT NO: 95-073 | DISK/BOX: 6K/16<br>REF: 10/13 | FILENAME: FAIRWAY37.DWG<br>FWAYPLAT.DWG | REV. |
| SCALE: 1"=50'   | DATE: 06/28/99                 | SHEET 4 of 6                  |   |      |