

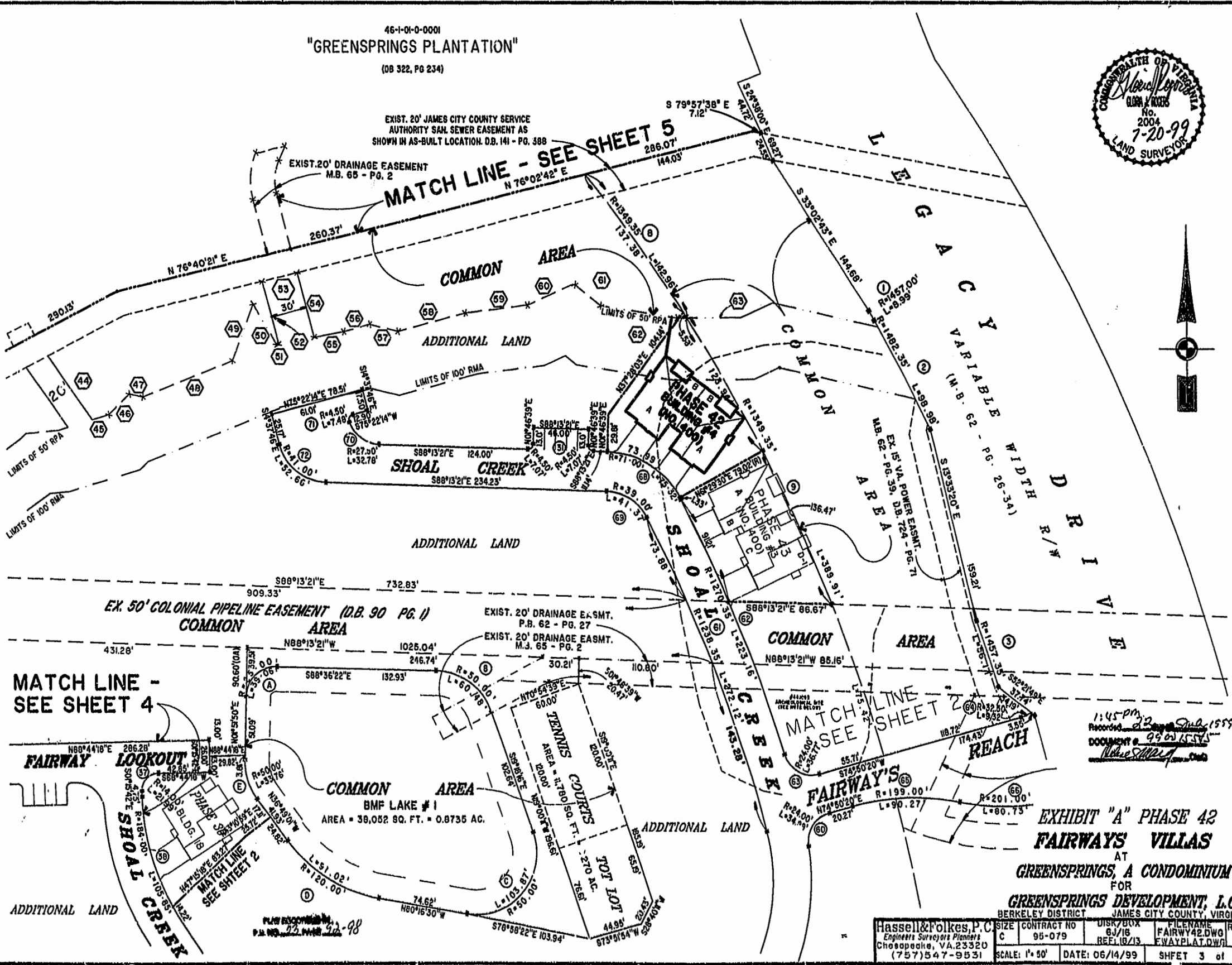
"GREENSPRINGS PLANTATION"
46-1-01-0-0001
(08 322, PG 234)



EXIST. 20' JAMES CITY COUNTY SERVICE
AUTHORITY SAN. SEWER EASEMENT AS
SHOWN IN AS-BUILT LOCATION. D.B. 141 - PG. 388

EXIST. 20' DRAINAGE EASEMENT
M.B. 65 - PG. 2

MATCH LINE - SEE SHEET 5
N 76°02'42" E



EX. 50' COLONIAL PIPELINE EASEMENT (D.B. 90 PG. 1)
COMMON AREA

EXIST. 20' DRAINAGE EASMT.
P.B. 62 - PG. 27
EXIST. 20' DRAINAGE EASMT.
M.J. 65 - PG. 2

MATCH LINE -
SEE SHEET 4

MATCH LINE
SEE SHEET 2

1:45 pm
Recorded 2/2/99
DOCUMENT # 99-01554
Nelson & Associates

COMMON AREA
BMF LAKE # 1
AREA = 39,052 SQ. FT. = 0.8735 AC.

EXHIBIT "A" PHASE 42
FAIRWAYS VILLAS
AT
GREENSPRINGS, A CONDOMINIUM
FOR
GREENSPRINGS DEVELOPMENT, L.C.

| | | | | | |
|---|-----------------|----------------|------------|---------------|------|
| Hassell & Folkes, P.C. Engineers Surveyors Planners Chesapeake, VA 23320 (757)547-9531 | SIZE | CONTRACT NO | DISK/BOX | FILENAME | REV. |
| | C | 95-079 | 6J/16 | FAIRWAY42.DWG | |
| | SCALE: 1" = 30' | DATE: 06/14/99 | REF. 18/13 | FWAYPLAT.DWG | |

PLAN REVISIONS
P.M. NO. 73, 1448, 24-98