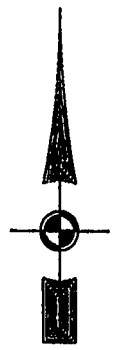


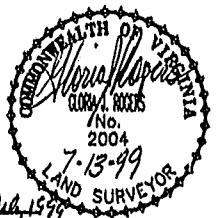
EXIST. 20' JAMES CITY COUNTY SERVICE AUTHORITY SAN. SEWER EASEMENT AS SHOWN IN AS-BUILT LOCATION. D.B. 141 - PG. 38B



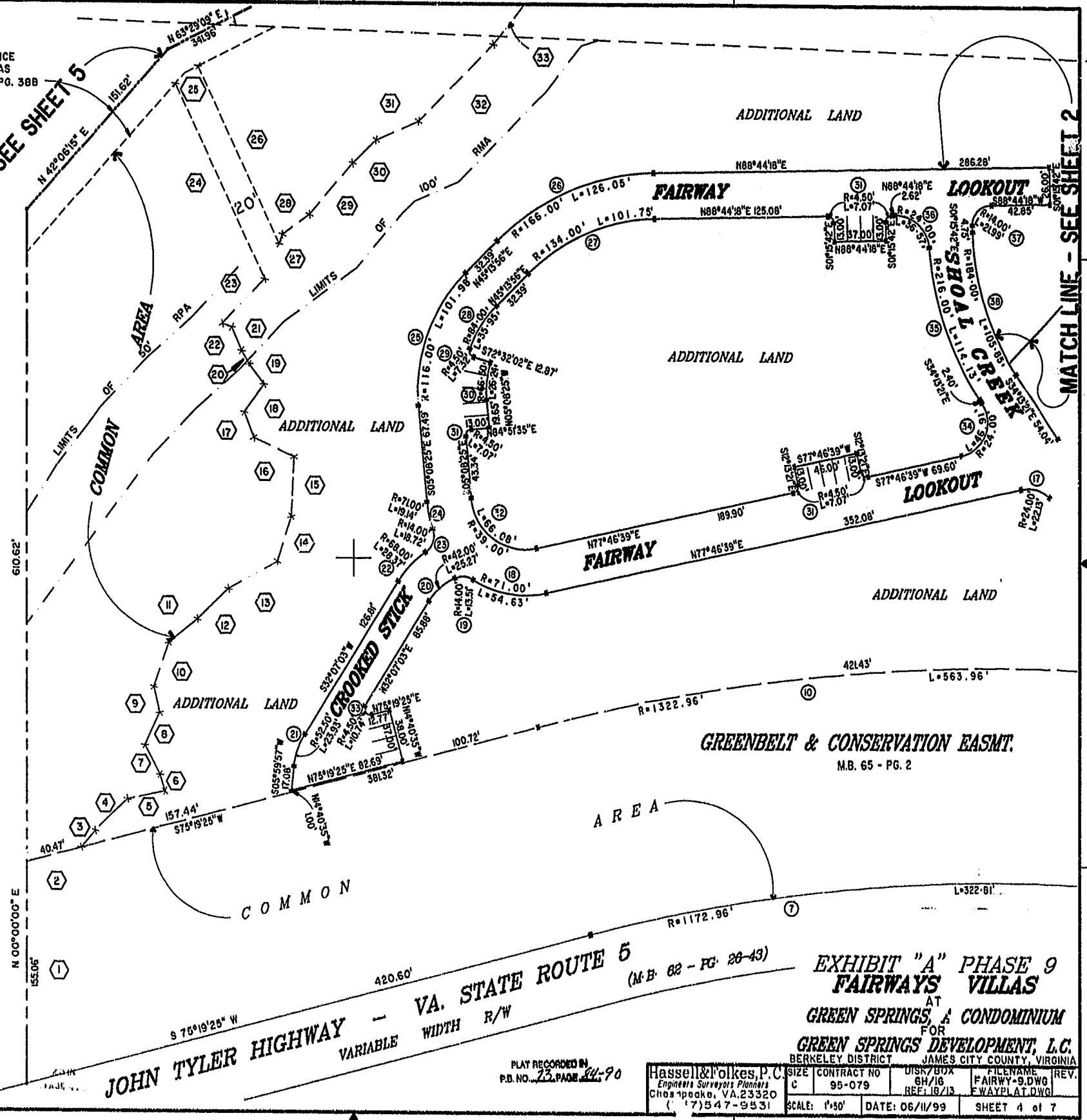
MATCH LINE - SEE SHEET 5

MATCH LINE - SEE SHEET 2

46-1-01-0-0001
"GREENSPRINGS PLANTATION"
(OB 322, PG 254)



Recorded 20 day of Feb 1999
DOCUMENT # 99-15102
Clerk



VA. STATE ROUTE 5
JOHN TYLER HIGHWAY - VARIABLE WIDTH R/W
420.60'
S 76° 19' 25\"/>

GREENBELT & CONSERVATION EASMT.
MB. 65 - PG. 2

EXHIBIT "A" PHASE 9
FAIRWAYS VILLAS
AT
GREEN SPRINGS, A CONDOMINIUM
FOR
GREEN SPRINGS DEVELOPMENT, L.C.
BERKELEY DISTRICT JAMES CITY COUNTY, VIRGINIA

PLAT RECORDED IN
P.B. NO. 73, PAGE 44-90

Hassell & Folkes, P.C. Engineers Surveyors Planners Chesapeake, VA, 23320 (754) 547-9331	SIZE C	CONTRACT NO 95-079	DISK/BOX 6H/16	FILENAME FAIRWAY-9.DWG	REV. 1
	SCALE: 1"=50'	DATE: 06/11/99	REF: 16/13	FWAYPLAT.DWG	SHEET 4 of 7

CONDO 3