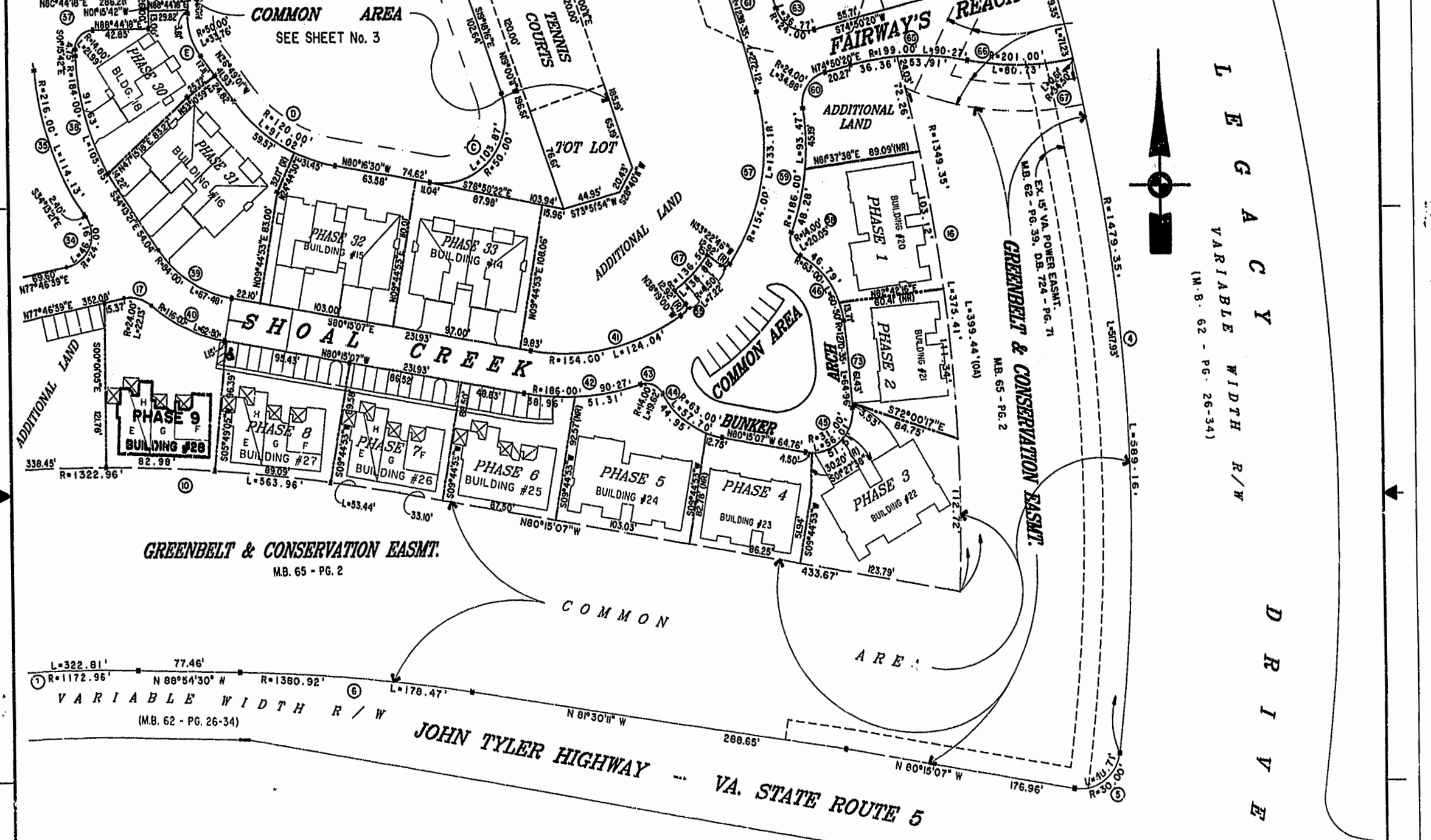


MATCH LINE SEE SHEET 4

MATCH LINE - SEE SHEET 3



LEGACY
 VARIABLE WIDTH R/W
 (M.B. 62 - PG. 26-34)

D R I V E

GREENBELT & CONSERVATION EASMT.
 M.B. 65 - PG. 2

VARIABLE WIDTH R/W
 (M.B. 62 - PG. 26-34)

JOHN TYLER HIGHWAY - VA. STATE ROUTE 5

**EXHIBIT "A" PHASE 9
 FAIRWAYS VILLAS
 AT
 GREEN SPRINGS, A CONDOMINIUM
 FOR
 GREEN SPRINGS DEVELOPMENT, L.C.
 BERKELEY DISTRICT JAMES CITY COUNTY, VIRGINIA**

Recorded 20 day of Aug 1999
 DOCUMENT # 99-15102
 [Signature] Clerk

PLAT RECORDED IN
 P.B. NO. 72 PAGE 84-90



Hassel & Folkes, P.C. Engineers Surveyors Planners Chesapeake, VA 23320 (757)547-9531	SIZE C	CONTRACT NO 95-079	DISK/BOX 61/16	FILENAME FAIRWAY-9.DWG	REV. E WAYPL AT.DWG
SCALE: 1"=30'		DATE: 05/11/99	SHEET 2 of 7		