

5248 Olde Towne Road, Suite 1
Williamsburg, Virginia 23188
(757) 253-0040
Fax (757) 220-8994

**PLAT SHOWING UTILITY EASEMENT
TO BE DEDICATED TO THE CITY OF WILLIAMSBURG
AND VARIOUS EASEMENTS TO BE VACATED
BEING PARCEL 1
OWNED BY 752 L.L.C.,
A VIRGINIA LIMITED LIABILITY COMPANY**
CITY OF WILLIAMSBURG VIRGINIA



No.	DATE	REVISION / COMMENT / NOTE	BY

Designed GTW/ADS	Drawn JES
Scale 1" = 100'	Date 12/25/98
Project No. 8395-6	
Drawing No. 10F-1	

LINE TABLE (VARIABLE WIDTH UTILITY EASEMENT)

NUMBER	BEARING	DISTANCE
L7	S16°08'41"E	82.52'
L8	N88°33'53"E	6.24'
L9	S17°33'38"E	21.53'
L10	S29°54'27"W	48.65'
L11	S16°08'41"E	32.00'
L12	N74°38'51"E	39.26'
L13	S17°23'28"E	20.69'
L14	S27°18'18"W	41.79'
L15	S19°15'00"E	4.44'
L16	N70°45'00"E	10.69'
L17	S19°15'00"E	15.00'
L18	S70°45'00"W	10.69'
L19	S19°15'00"E	6.73'
L20	S82°45'59"E	34.67'
L21	N6°46'50"E	19.82'
L22	S69°53'08"W	55.19'
L23	N19°15'00"W	67.06'
L24	S73°51'19"W	34.68'
L25	S16°08'41"E	29.20'
L26	S73°51'19"W	25.00'
L27	N16°08'41"W	29.20'
L28	S73°51'19"W	61.44'
L29	S16°08'41"E	29.00'
L30	S73°51'19"W	77.00'
L31	N16°08'41"W	29.00'
L32	S73°51'19"W	63.03'
L33	S16°08'41"E	29.00'
L34	S73°51'19"W	25.00'
L35	N16°08'41"W	29.00'
L36	S73°51'19"W	62.29'
L37	S16°08'41"E	25.00'
L38	S73°51'19"W	25.00'
L39	N16°08'41"W	29.00'
L40	S73°51'19"W	43.50'
L41	S36°58'15"W	21.97'
L42	S73°51'19"W	31.39'
L43	N16°08'41"W	38.18'
L44	N73°51'19"E	71.27'
L45	N16°08'41"W	54.72'
L46	S73°51'19"W	85.71'
L47	S71°12'14"W	45.57'
L48	S73°51'19"W	36.12'
L49	S16°08'41"E	23.88'
L50	S73°51'19"W	25.00'
L51	N16°08'41"W	23.88'
L52	S73°51'19"W	71.01'
L53	S16°08'41"E	23.88'
L54	S73°51'19"W	25.00'
L55	N16°08'41"W	23.80'
L56	S73°51'19"W	62.86'
L57	S16°08'41"E	23.78'
L58	S73°51'19"W	25.00'
L59	N16°08'41"W	23.78'
L60	S73°51'19"W	61.81'
L61	S16°08'41"E	25.72'
L62	S73°51'19"W	19.72'
L63	N40°02'54"W	24.98'
L64	S28°14'40"W	64.55'
L65	S38°38'41"E	80.01'

LINE TABLE (VARIABLE WIDTH UTILITY EASEMENT)

NUMBER	BEARING	DISTANCE
L66	S65°45'18"E	18.38'
L67	N20°45'18"W	11.80'
L68	N69°14'42"E	15.00'
L69	S20°45'18"E	13.02'
L70	N69°14'42"E	158.62'
L71	S20°45'18"E	13.88'
L72	N69°14'42"E	34.44'
L73	N69°14'42"E	136.87'
L74	S20°45'18"E	15.00'
L75	S69°14'42"W	136.87'
L76	S69°14'42"W	39.17'
L77	S20°45'18"E	29.50'
L78	S69°14'42"W	25.00'
L79	N20°45'18"W	29.50'
L80	S69°14'42"W	60.76'
L81	S20°45'18"E	29.50'
L82	S69°14'42"W	25.00'
L83	N20°45'18"W	29.50'
L84	S69°14'42"W	57.03'
L85	S04°17'53"E	29.04'
L86	S88°40'08"W	30.20'
L87	N02°22'58"W	30.72'
L88	N56°33'00"W	12.72'
L89	S25°48'50"W	33.35'
L90	N60°28'05"W	25.00'
L91	N33°23'32"E	35.36'
L92	N56°32'00"W	24.54'
L93	N74°22'25"W	44.19'
L94	N21°33'44"W	25.00'
L95	N80°18'19"E	21.25'
L96	N64°08'54"E	18.82'
L97	N51°21'19"E	4.16'
L98	N38°38'41"W	15.15'
L99	N28°14'40"E	55.17'
L100	N63°45'20"W	39.07'
L101	N28°14'40"E	25.00'
L102	N85°38'26"E	55.09'
L103	N16°08'41"W	34.19'
L104	N73°51'19"E	25.00'
L105	S16°08'41"E	34.19'
L106	N73°51'19"E	30.29'
L107	N16°08'41"W	17.77'
L108	N73°51'19"E	15.00'
L109	S16°08'41"E	17.77'
L110	N73°51'19"E	16.71'
L111	N16°08'41"W	34.19'
L112	N73°51'19"E	25.00'
L113	S16°08'41"E	34.19'
L114	N73°51'19"E	61.84'
L115	N16°08'41"W	34.19'
L116	N73°51'19"E	25.00'
L117	S16°08'41"E	34.19'
L118	N73°51'19"E	62.47'
L119	N16°08'41"W	34.19'
L120	N73°51'19"E	25.00'

LINE TABLE (PROPERTY LINES)

NUMBER	BEARING	DISTANCE
L121	S16°08'41"E	34.19'
L122	N73°51'19"E	31.49'
L123	N69°25'24"E	15.59'
L124	N16°08'41"W	28.48'
L125	N73°51'19"E	25.00'
L126	S16°08'41"E	27.50'
L127	N73°51'19"E	59.25'
L128	N16°08'41"W	29.00'
L129	N73°51'19"E	25.00'
L130	S16°08'41"E	29.00'
L131	N73°51'19"E	67.88'
L132	N16°08'41"W	29.00'
L133	N73°51'19"E	25.00'
L134	S16°08'41"E	29.00'
L135	N73°51'19"E	62.31'
L136	N16°08'41"W	29.00'
L137	N73°51'19"E	25.00'
L138	S16°08'41"E	29.00'
L139	N73°51'19"E	55.12'
L140	N16°08'41"W	29.00'
L141	N73°51'19"E	25.00'
L142	S16°08'41"E	29.00'
L143	N73°51'19"E	61.90'
L144	N16°08'41"W	29.00'
L145	N73°51'19"E	25.00'
L146	S16°08'41"E	21.45'
L147	N61°32'40"E	34.12'
L148	N16°08'41"W	69.52'
L149	N70°56'09"E	15.02'
L150	S16°08'41"E	58.72'
L151	S73°51'19"W	326.88'
L152	N16°08'41"W	58.72'
L153	N73°51'19"E	326.88'
L154	S38°38'41"E	51.42'
L155	N56°33'02"W	29.49'
L156	N74°53'26"W	37.18'
L157	N65°11'45"E	27.70'
L158	N51°21'19"E	4.16'
L159	N89°17'15"E	17.75'
L160	S20°42'31"E	15.00'
L161	S69°17'15"E	17.75'
L162	N89°17'15"E	17.50'
L163	S20°42'45"E	15.00'
L164	S69°17'15"W	17.50'

THE LINES ONLY

NUMBER	BEARING	DISTANCE
L11	S19°15'00"E	15.00'
L12	S7°05'09"W	93.92'
L13	N40°30'01"W	29.78'
L14	N42°41'39"E	29.97'
L15	N20°42'45"W	47.61'
L16	S20°42'45"E	86.17'
L17	N43°02'08"E	15.21'

LINE TABLE (PROPERTY LINES)

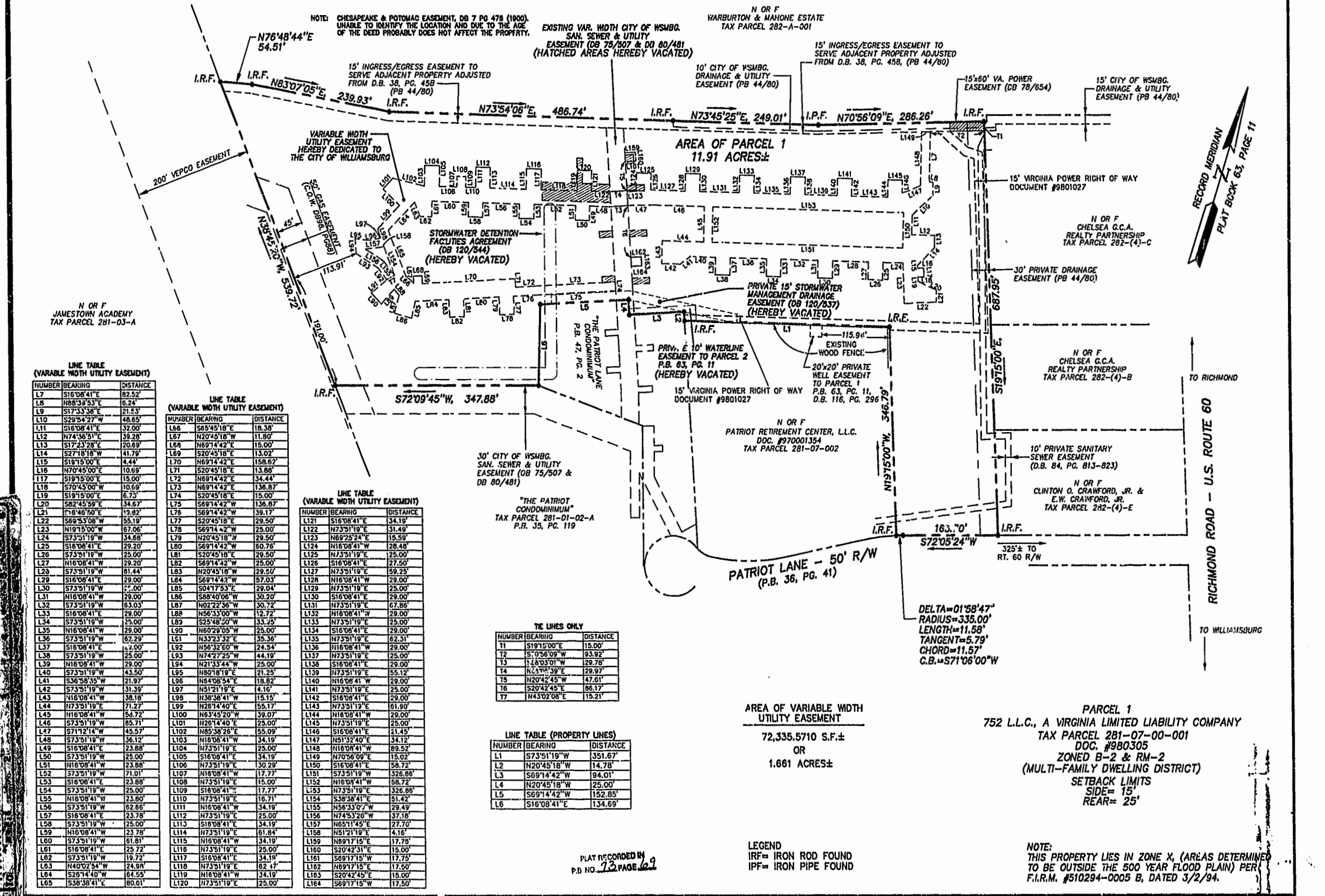
NUMBER	BEARING	DISTANCE
L1	S73°51'19"W	351.67'
L2	N20°45'18"W	14.78'
L3	S69°14'42"W	94.01'
L4	N20°45'18"E	25.00'
L5	S69°14'42"W	152.85'
L6	S16°08'41"E	134.69'

**AREA OF VARIABLE WIDTH
UTILITY EASEMENT**
72,335,5710 S.F.±
OR
1.661 ACRES±

LEGEND
IRF= IRON ROD FOUND
IPF= IRON PIPE FOUND

NOTE:
THIS PROPERTY LIES IN ZONE X, (AREAS DETERMINED
TO BE OUTSIDE THE 500 YEAR FLOOD PLAIN) PER
F.I.R.M. #510294-0005 B, DATED 3/2/94.

PARCEL 1
752 L.L.C., A VIRGINIA LIMITED LIABILITY COMPANY
TAX PARCEL 281-07-00-001
DOC. #980305
ZONED B-2 & RM-2
(MULTI-FAMILY DWELLING DISTRICT)
SETBACK LIMITS
SIDE= 15'
REAR= 25'



RECORD MERIDIAN
PLAT BOOK 63, PAGE 11

TO RICHMOND
RICHMOND ROAD - U.S. ROUTE 60
TO WILLIAMSBURG

PLAT RECORDED IN
P.D. NO. 12, PAGE 62