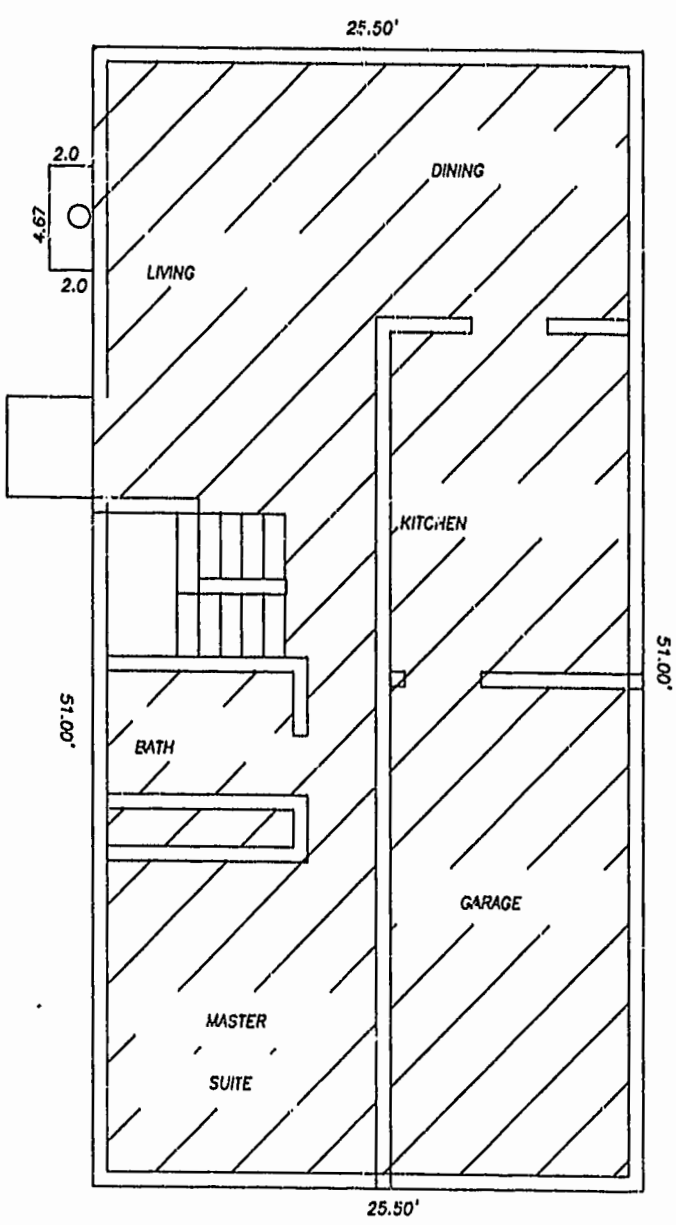
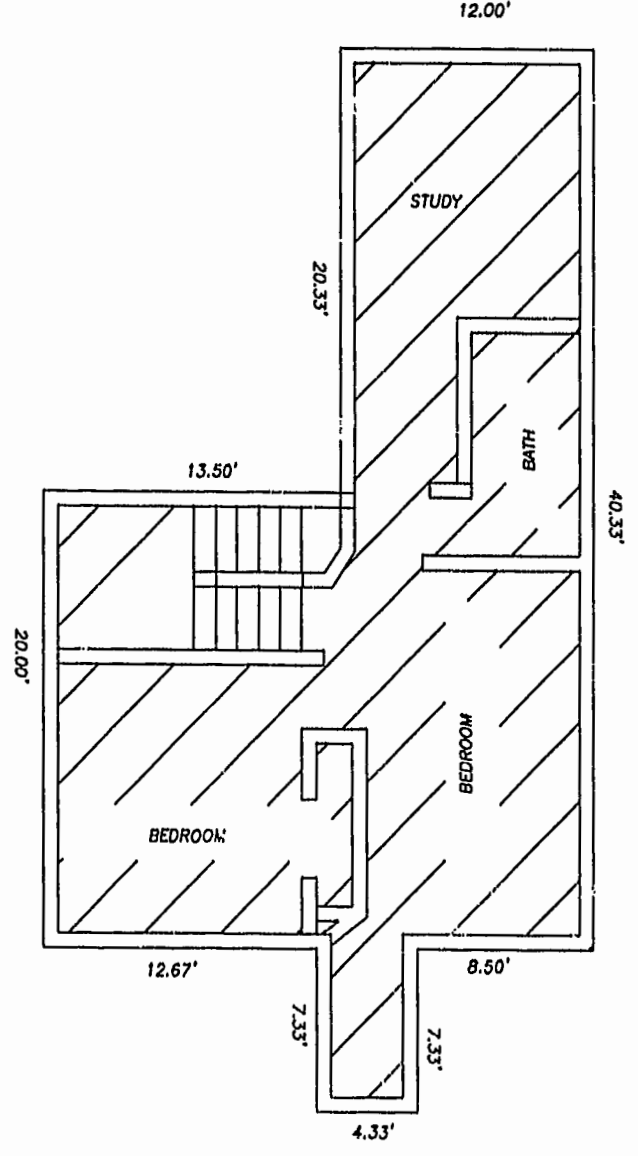


NOTES:

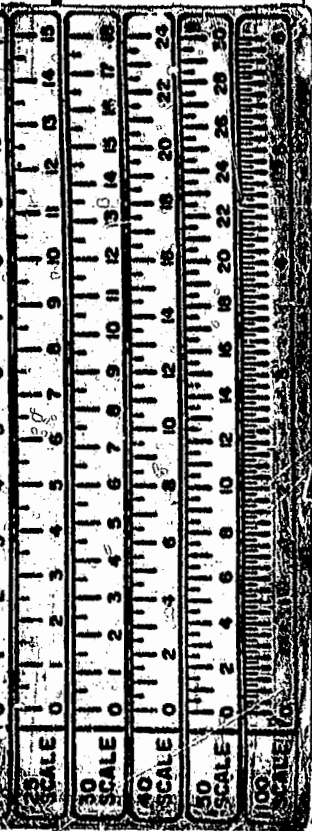
1. ALL BUILDING DIMENSIONS AND INTERIOR DIMENSIONS ARE IN FEET.
2. THE PORTION OF THE IMPROVEMENTS DESIGNATED AS A UNIT IS SUBJECT TO THE DEFINITION OF THE THE TERM "UNIT" IN THE DECLARATION. EXTERIOR WALLS, DIVIDING WALLS BETWEEN UNITS, AND COLUMNS OR LOAD BEARING MEMBERS WHICH SUPPORT MORE THAN ONE UNIT ARE NOT PART OF THE UNIT.
3. INTERIOR UNIT CONFIGURATIONS AND PARTITIONS AS DEPICTED HEREON ARE FOR ILLUSTRATION ONLY AND MAY NOT REPRESENT THE INTERIOR OF A UNIT AS ACTUALLY BUILT.



MODEL D
FIRST FLOOR



MODEL D
SECOND FLOOR



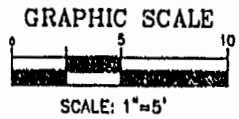
THE UNDERSIGNED CERTIFIES THAT THESE PLANS ARE ACCURATE AND COMPLY WITH THE PROVISIONS OF CODE OF VIRGINIA, SECTION 55-79.58.B AND THAT ALL UNITS OR PORTIONS THEREOF DEPICTED HEREON AND ALL COMMON ELEMENTS HAVE BEEN SUBSTANTIALLY COMPLETED.

SIGNED: *Samuel J. Slaughter, Jr.*
SAMUEL J. SLAUGHTER, JR., L.S.

EXHIBIT B

21 1999
DOCUMENT NO. 13-376
SJA

LEGEND
 UNIT AREA



CONDOMINIUM PLAN OF CROMWELL RIDGE CONDOMINIUMS		
JAMES CITY COUNTY, VIRGINIA		
DATE: 4/12/99	SHEET 4 OF 5	SCALE: 1"=5'
PROJECT NO: 97-003	DRAWN BY: SJS	
SLEDD & ASSOCIATES, P.C. ENGINEERS PLANNERS SURVEYORS 11832 ROCK LANDING DRIVE, SUITE 203 NEWPORT NEWS, VIRGINIA 23606 (757) 873-3306		