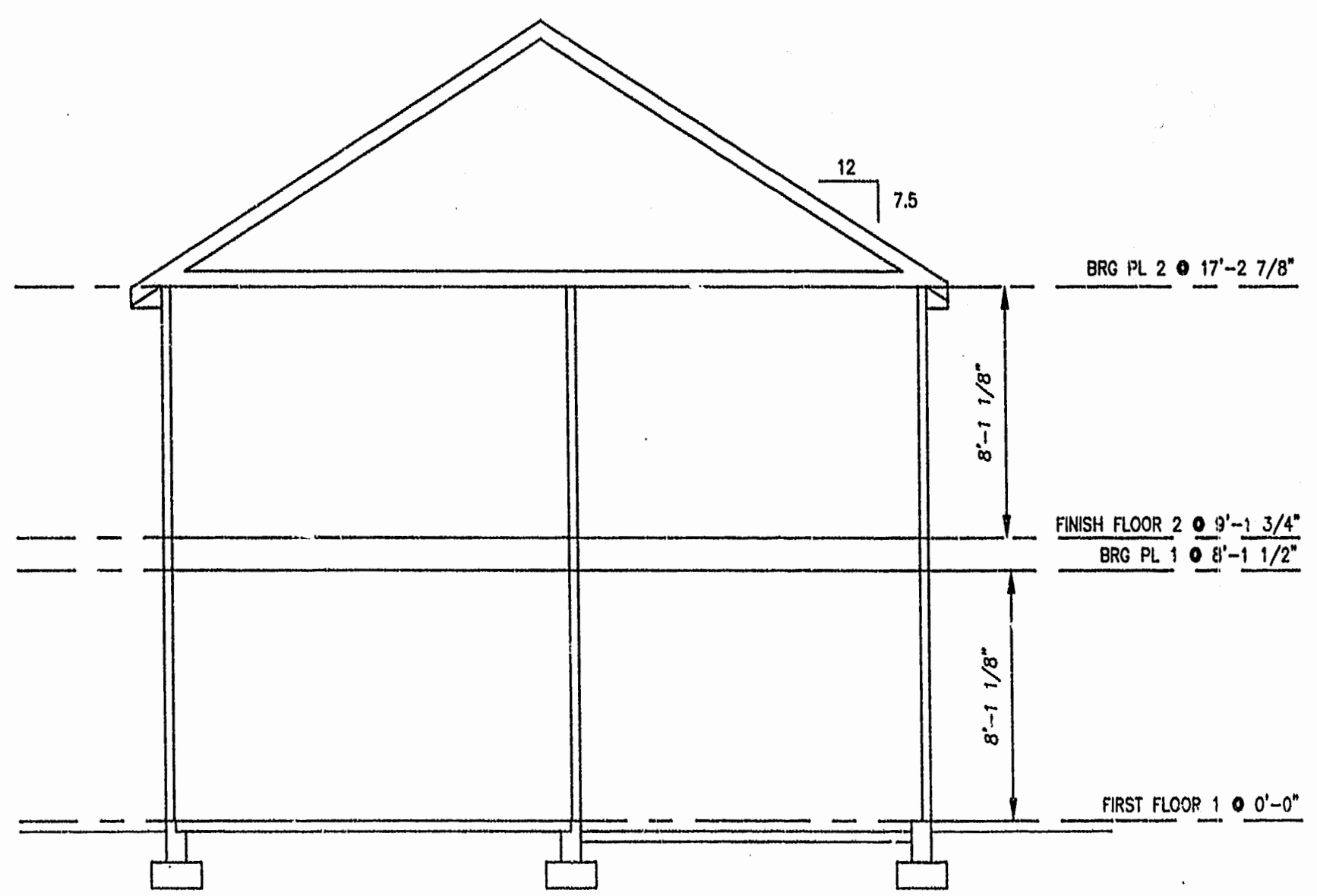
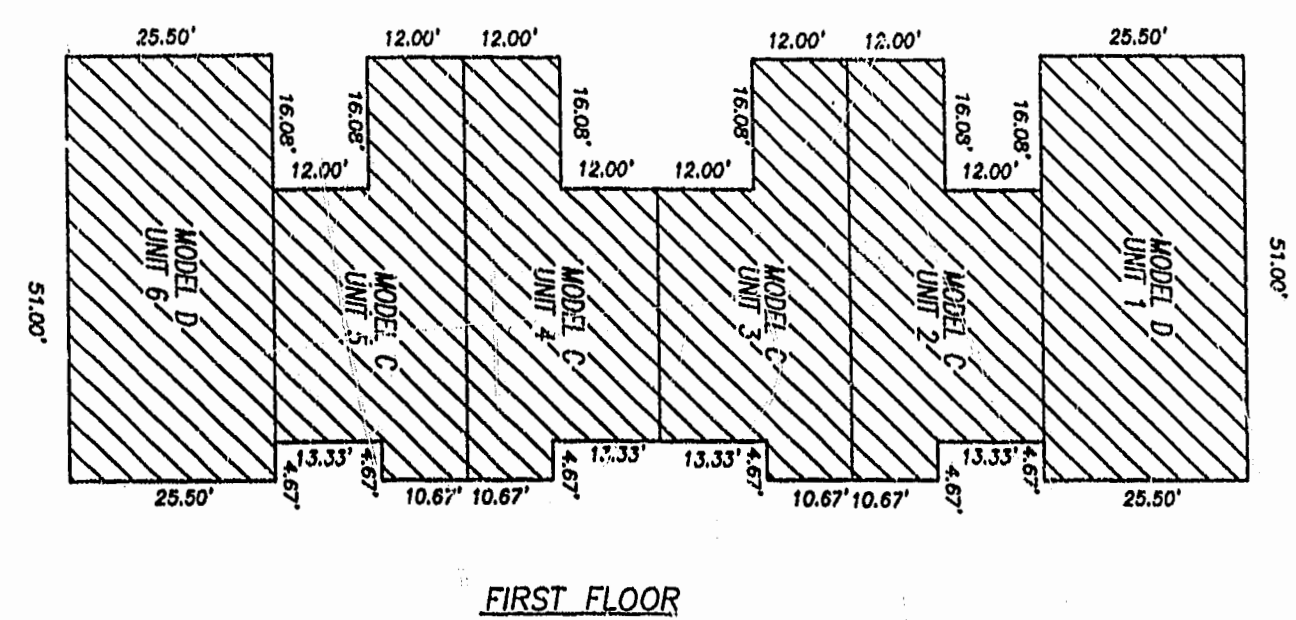
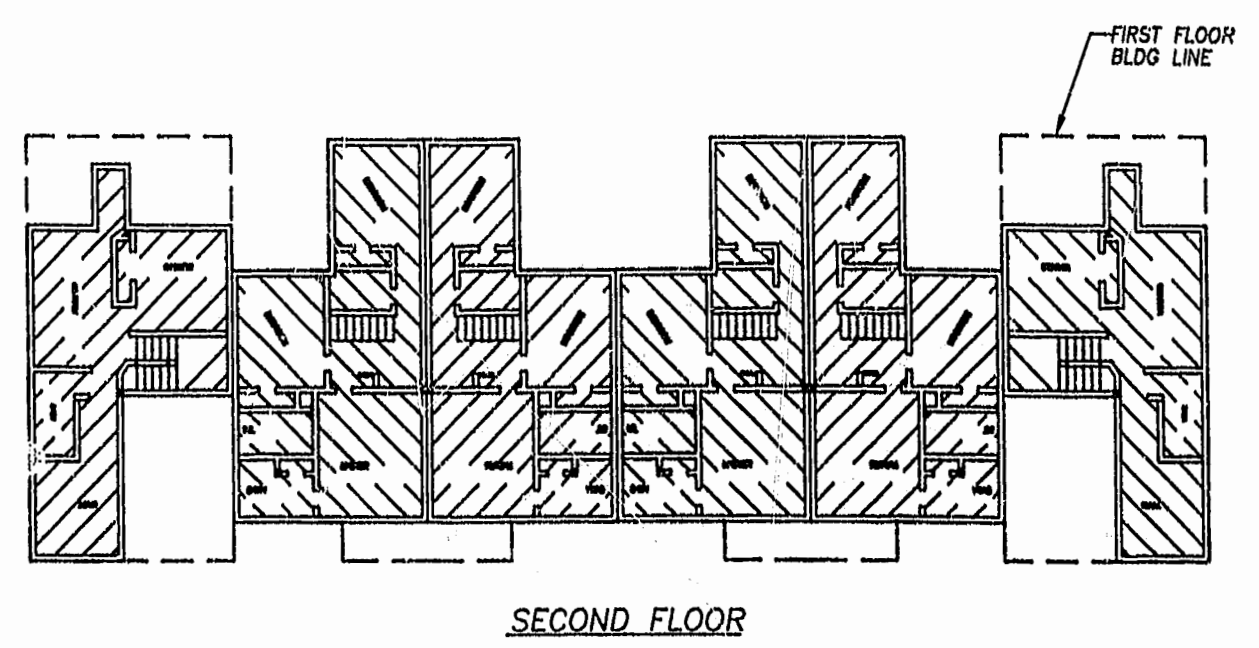
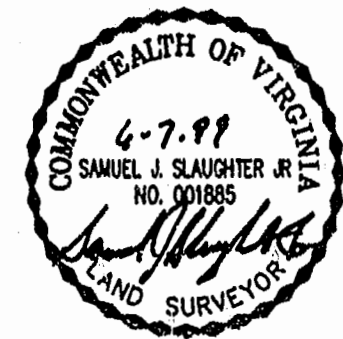


NOTE:
ALL BUILDING DIMENSIONS SHOWN ARE EXTERIOR DIMENSIONS



21
961013374
Sledd & Associates
TYPICAL BUILDING SECTION



THE UNDERSIGNED CERTIFIES THAT THESE PLANS ARE ACCURATE AND COMPLY WITH THE PROVISIONS OF CODE OF VIRGINIA, SECTION 55-79.58.B AND THAT ALL UNITS OR PORTIONS THEREOF DEPICTED HEREON AND ALL COMMON ELEMENTS HAVE BEEN SUBSTANTIALLY COMPLETED.

SIGNED: *Samuel J. Slaughter, Jr.*
SAMUEL J. SLAUGHTER, JR., L.S.

EXHIBIT B

**CONDOMINIUM PLAT
OF
CROMWELL RIDGE CONDOMINIUMS**

JAMES CITY COUNTY, VIRGINIA

DATE: 4/12/99	SHEET 3 OF 5	SCALE: 1"=20'
PROJECT NO: 97-003	DRAWN BY: SJS	

SLEDD & ASSOCIATES, P.C.
ENGINEERS PLANNERS SURVEYORS
11832 ROCK LANDING DRIVE, SUITE 203
NEWPORT NEWS, VIRGINIA 23606
(757) 873-3386

LEGEND
UNIT AREA

