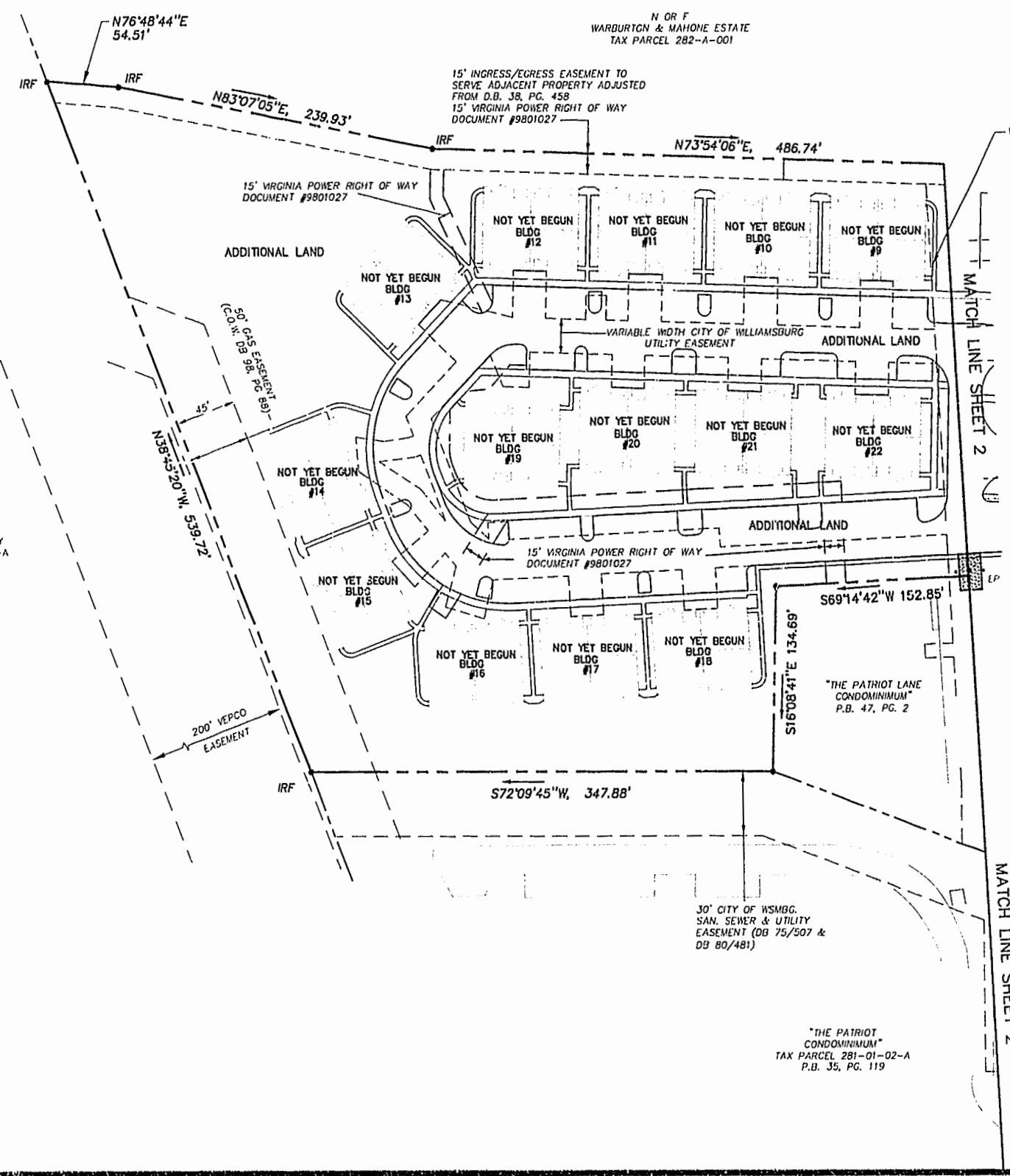
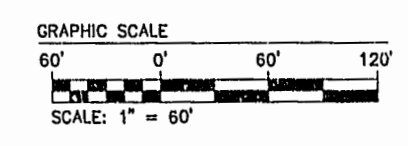
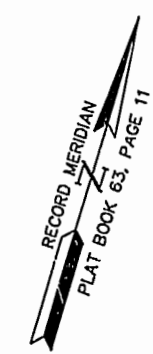


N/F
JAMESTOWN ACADEMY
TAX PARCEL 281-03-A



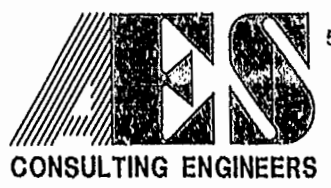
NOTE:
VARIABLE WIDTH CITY OF WILLIAMSBURG
SANITARY & UTILITY EASEMENT IS
SHOWN PER PLAT BY AES DATED 12/23/98.

VARIABLE WIDTH CITY OF WILLIAMSBURG
SAN. SEWER & UTILITY
EASEMENT (DB 75/507 &
DB 80/481)



AREA
PHASE ONE= 3.355 AC.±
ADDITIONAL AREA= 8.558 AC.±
TOTAL AREA PARCEL 1= 11.913 AC±

NOTE:
AT TIME OF SURVEY ROADS
ARE UNDER CONSTRUCTION AND
SIDEWALK CONSTRUCTION HAS
NOT BEGUN (PROPOSED LOCATION SHOWN).
WATER & SANITARY SYSTEM ARE IN PLACE.



5248 Olde Towne Road, Suite 1
Williamsburg, Virginia 23188
(757) 253-0040
Fax (757) 220-8994

PLAT OF CONDOMINIUM
WESTGATE AT WILLIAMSBURG,
A CONDOMINIUM
PHASE ONE
OWNED BY: 752 L.L.C.,
A VIRGINIA LIMITED LIABILITY COMPANY
CITY OF WILLIAMSBURG VIRGINIA



No.	DATE	REVISION / COMMENT / NOTE	BY

Designed GTW/ADS	Drawn JFS
Scale 1" = 60'	Date 5/26/99
Project No. 8395-6	
Drawing No. 3 OF 6	

PLAT RECORDED IN
P.D. NO. 23 PAGE 44-46