

PROPERTY TO BE CONVEYED TO OWNERS ASSOCIATION

(A)	3,803 S.F.	0.0873 AC.
(B)	5,685 S.F.	0.1305 AC.
(C)	1,694 S.F.	0.0389 AC.
(D)	664,621 S.F.	15.2576 AC.
(E)	3,441 S.F.	0.0790 AC.
(F)	806 S.F.	0.0185 AC.

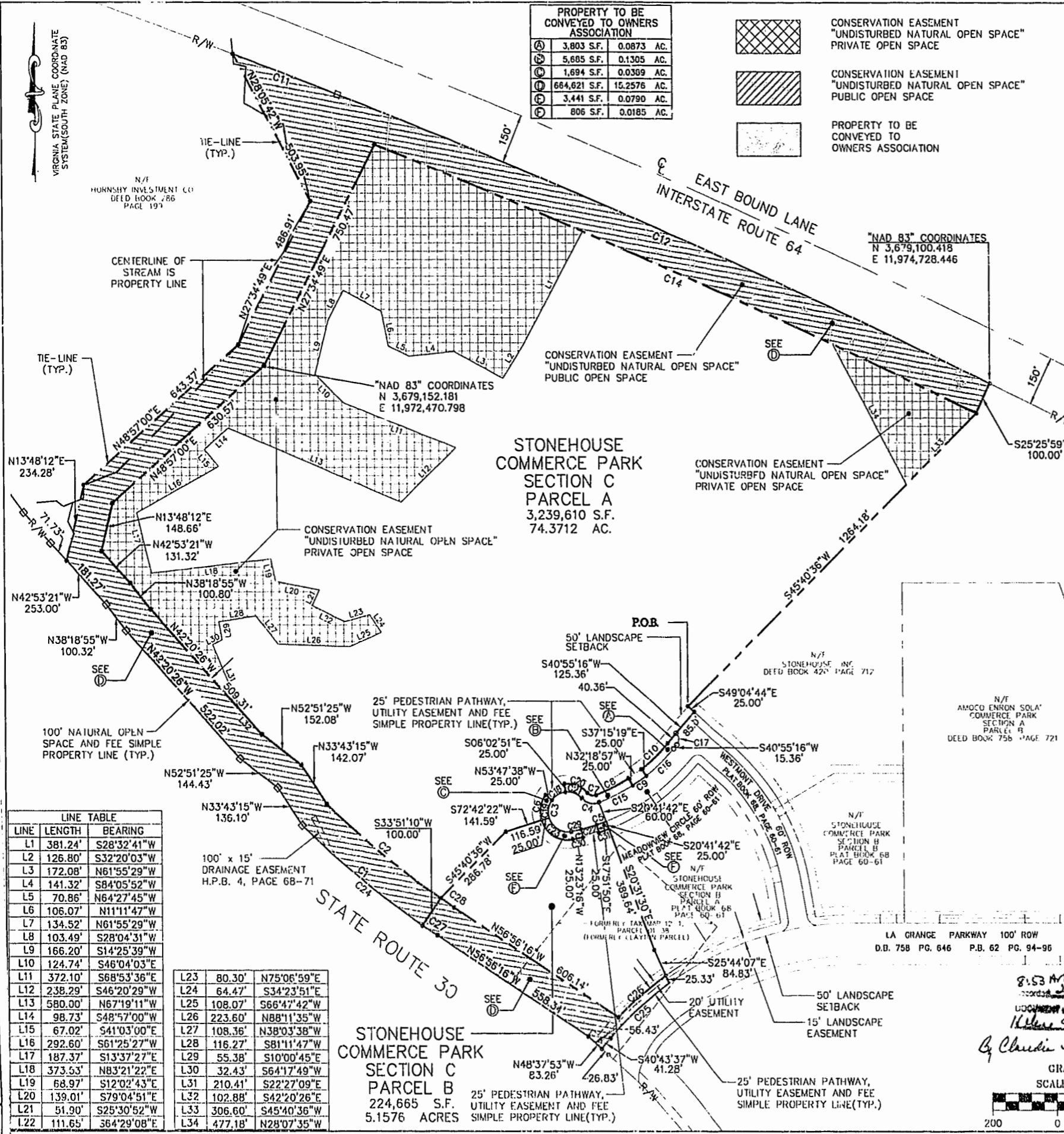
CONSERVATION EASEMENT "UNDISTURBED NATURAL OPEN SPACE" PRIVATE OPEN SPACE

CONSERVATION EASEMENT "UNDISTURBED NATURAL OPEN SPACE" PUBLIC OPEN SPACE

PROPERTY TO BE CONVEYED TO OWNERS ASSOCIATION

CURVE TABLE

CURVE	RADIUS	LENGTH	TANGENT	CHORD	BEARING	DELTA
C1	2725.78'	480.92'	241.09'	480.30'	S51°05'34"E	10°06'32"
C2	2625.78'	452.58'	226.85'	452.02'	S51°12'34"E	09°52'32"
C3	60.00'	249.24'	108.22'	104.95'	S18°26'53"W	238°00'34"
C4	50.00'	59.47'	33.82'	56.03'	S76°37'16"E	68°08'52"
C5	640.00'	31.62'	15.82'	31.62'	S70°43'14"W	02°49'52"
C6	85.00'	79.37'	42.84'	76.52'	S09°27'22"W	53°30'00"
C7	25.00'	29.74'	16.91'	28.01'	S76°37'16"E	68°08'52"
C8	555.00'	112.57'	56.48'	112.37'	N63°29'40"E	11°37'15"
C9	580.00'	50.00'	25.02'	49.98'	N55°12'52"E	04°56'21"
C10	555.00'	114.53'	57.47'	114.33'	N46°49'58"E	11°49'26"
C11	28497.89'	347.22'	173.61'	347.22'	N69°20'47"W	00°41'53"
C12	28497.89'	2203.50'	1102.30'	2202.95'	N66°46'56"W	04°25'49"
C13	28497.89'	1522.21'	761.29'	1522.03'	N63°02'13"W	03°03'38"
C14	28397.89'	2034.71'	1017.79'	2034.27'	N66°37'11"W	04°06'19"
C15	590.00'	117.64'	59.02'	117.44'	N63°29'40"E	11°37'15"
C16	580.00'	119.69'	60.06'	119.48'	N46°49'58"E	11°49'26"
C17	25.00'	39.27'	25.00'	35.36'	N04°04'44"W	90°00'00"
C18	60.00'	50.00'	26.55'	48.57'	S60°04'46"W	47°44'47"
C19	60.00'	56.03'	30.24'	54.01'	S09°27'22"W	53°30'00"
C20	85.00'	79.37'	42.84'	76.52'	N69°17'50"W	53°30'01"
C21	60.00'	56.03'	30.24'	54.01'	N69°17'50"W	53°30'01"
C22	640.00'	31.62'	15.82'	31.62'	S74°22'27"W	04°28'34"
C23	85.00'	123.52'	75.55'	112.94'	N58°55'31"W	83°15'46"
C24	2725.78'	534.29'	268.00'	533.43'	N51°39'14"W	11°13'50"
C25	1034.93'	249.80'	125.55'	249.16'	S47°50'53"W	14°14'32"
C26	1029.93'	195.31'	97.95'	195.02'	S49°45'51"W	10°51'55"
C27	2725.78'	53.37'	26.68'	53.37'	S56°42'30"E	01°07'18"
C28	2625.78'	51.41'	25.71'	51.41'	N56°42'30"W	01°07'18"
C29	640.00'	31.62'	15.82'	31.62'	S78°01'40"W	02°49'52"
C30	665.00'	32.86'	16.43'	32.86'	S78°01'40"W	02°49'52"
C31	665.00'	32.86'	16.43'	32.86'	S70°43'14"W	02°49'52"



LEGEND

- V.D.O.T. CONCRETE RIGHT-OF-WAY MONUMENT (FOUND)
- IRON PIN (SET)

AREA TABULATIONS
STONEHOUSE COMMERCE PARK SECTION C

TOTAL AREA	95.4890 ACRES 4,159,501 S.F.
PARCEL A	74.3712 ACRES 3,239,610 S.F.
PARCEL B	5.1576 ACRES 224,665 S.F.
RIGHT-OF-WAY	0.3484 ACRES 15,176 S.F.
PROPERTY TO BE CONVEYED TO OWNERS ASSOCIATION	15.6118 ACRES 680,050 S.F.
CONSERVATION EASEMENT PUBLIC NATURAL OPEN SPACE	15.1480 ACRES 659,849 S.F.

LINE TABLE

LINE	LENGTH	BEARING
L1	381.24'	S28°32'41"W
L2	126.80'	S32°20'03"W
L3	172.08'	N61°55'29"W
L4	141.32'	S84°05'52"W
L5	70.86'	N64°27'45"W
L6	106.07'	N11°11'47"W
L7	134.52'	N61°55'29"W
L8	103.49'	S28°04'31"W
L9	166.20'	S14°25'39"W
L10	124.74'	S46°04'03"E
L11	372.10'	S68°53'36"E
L12	238.29'	S46°20'29"W
L13	580.00'	N67°19'11"W
L14	98.73'	S48°57'00"W
L15	67.02'	S41°03'00"E
L16	292.60'	S61°25'27"W
L17	187.37'	S13°37'27"E
L18	373.53'	N83°21'22"E
L19	68.97'	S12°02'43"E
L20	139.01'	S79°04'51"E
L21	51.90'	S25°30'52"W
L22	111.65'	S64°29'08"E
L23	80.30'	N75°06'59"E
L24	64.47'	S34°23'51"E
L25	108.07'	S66°47'42"W
L26	223.60'	N88°11'35"W
L27	108.36'	N38°03'38"W
L28	116.27'	S81°11'47"W
L29	55.38'	S10°00'45"E
L30	32.43'	S64°17'49"W
L31	210.41'	S22°27'09"E
L32	102.88'	S42°20'26"E
L33	306.60'	S45°40'36"W
L34	477.18'	N28°07'35"W

8:53 AM
RECORDED 24 MAR 1999
DOCUMENT # 99001109
K. H. S. W. L. S.

GRAPHIC SCALE
SCALE: 1" = 200'

200 0 100 200 400

PLAT # 73-38-39
SUBDIVISION PLAT OF SECTION C OF STONEHOUSE COMMERCE PARK AT STONEHOUSE FOR STONEHOUSE INC.
STONEHOUSE DISTRICT
JAMES CITY COUNTY, VIRGINIA
SCALE: 1"=200' 03/22/99
SHEET 2 OF 2

Chesapeake