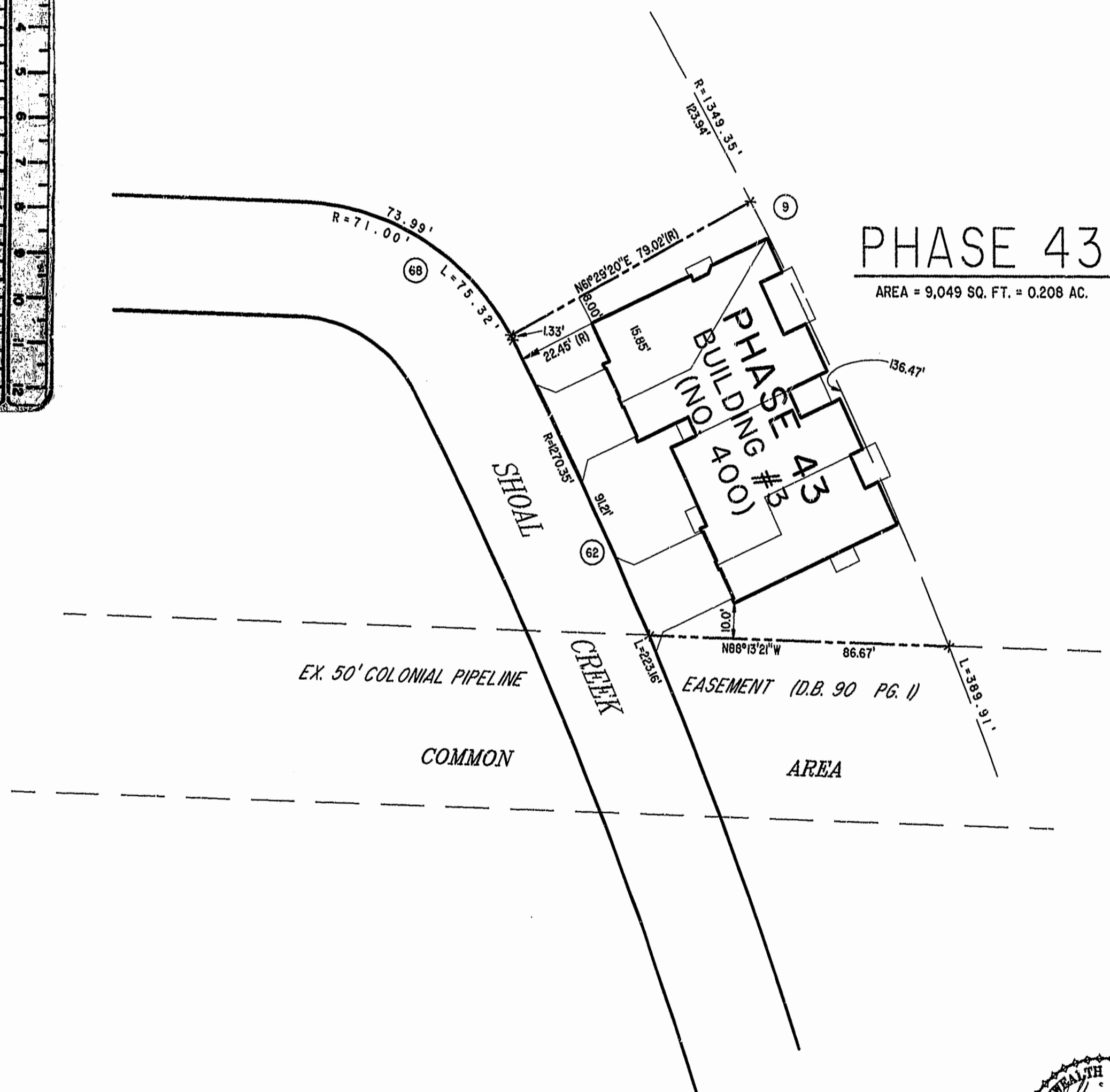
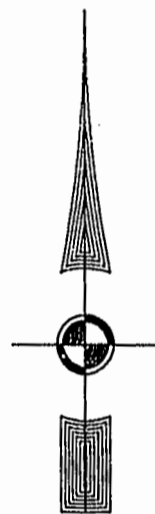


BUILDING NUMBER	UNIT NUMBER	UNIT TYPE	STREET ADDRESS
3	3-164	D-1	164 SHOAL CREEK
3	3-166	C	166 SHOAL CREEK
3	3-168	B	168 SHOAL CREEK
3	3-170	A	170 SHOAL CREEK



PHASE 43

AREA = 9,049 SQ. FT. = 0.208 AC.



Recorded 1:51 PM 19 day of May 1999
 DOCUMENT # 99-01-0838
 [Signature] Clerk

PLAT RECORDED IN
 P.B. NO. 13, PAGE 28-35



EXHIBIT "A" PHASE 43
 FAIRWAYS VILLAS
 AT
 GREEN SPRINGS, A CONDOMINIUM
 FOR
 GREEN SPRINGS DEVELOPMENT, L.C.
 BERKELEY DISTRICT JAMES CITY COUNTY, VIRGINIA

Hassell & Folkes, P.C. Engineers Surveyors Planners Chesapeake, VA 23320 (757) 547-9531	SIZE CONTRACT NO C 95-079	DISK/BOX 66/16 REF: 18/13	FILENAME FAIRWY43.DWG FWAYPLAT.DWG	REV.
SCALE: 1" = 25'	DATE: 03/15/99	SHEET 7 of 7		