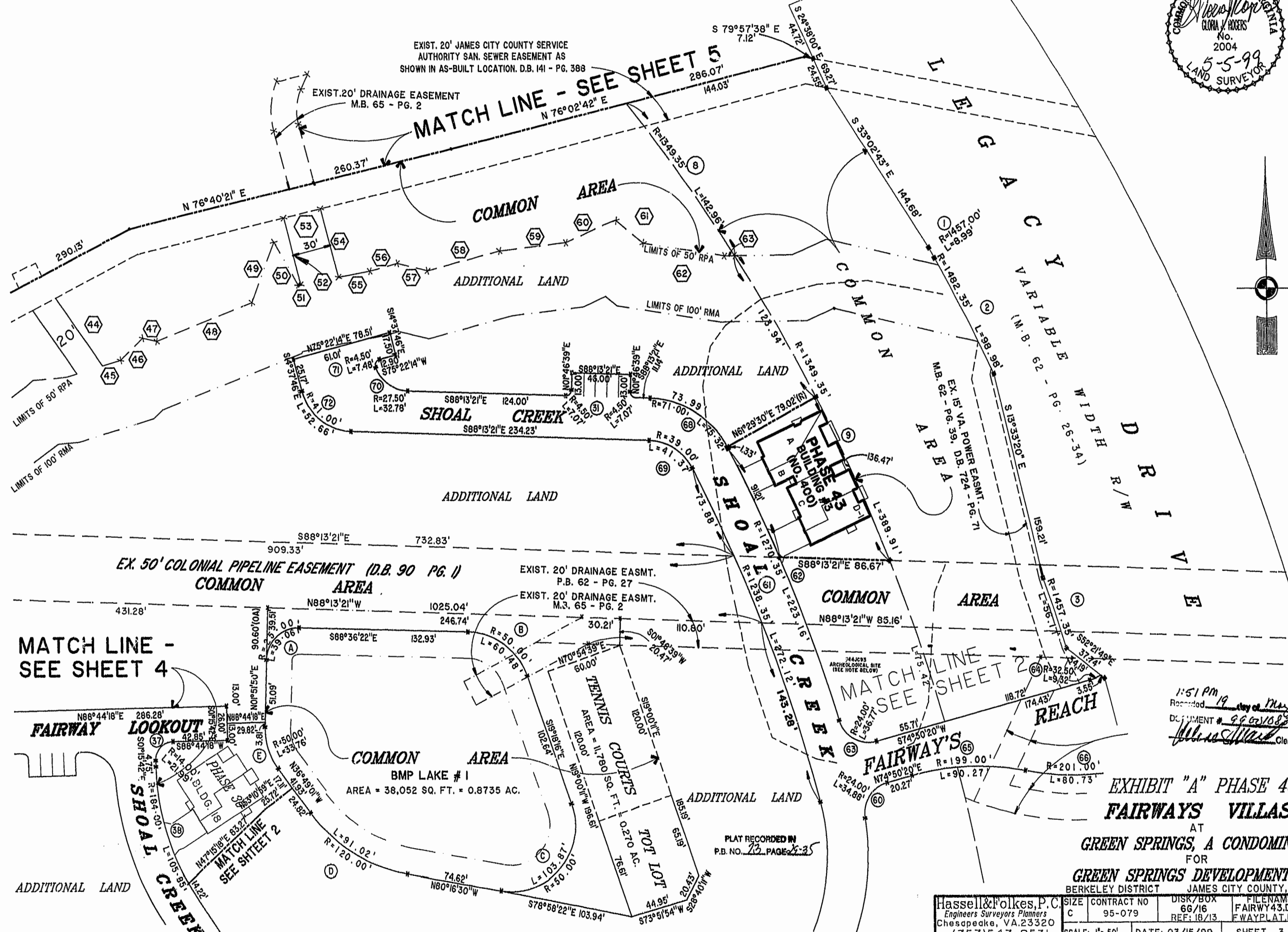
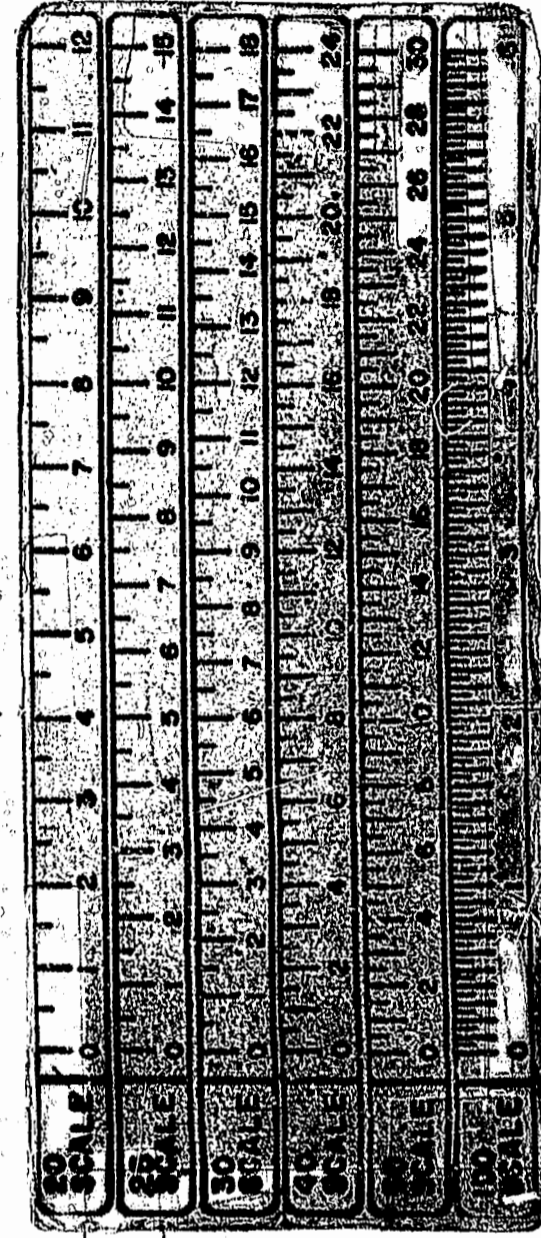
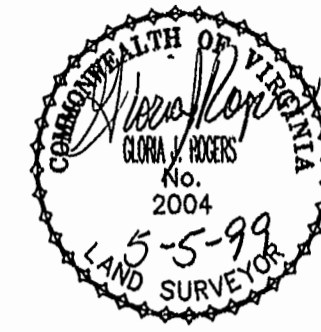


"GREENSPRINGS PLANTATION"
46-1-01-0-0001
(DB 322, PG 254)

EXIST. 20' JAMES CITY COUNTY SERVICE
AUTHORITY SAN. SEWER EASEMENT AS
SHOWN IN AS-BUILT LOCATION. D.B. 141 - PG. 388

EXIST. 20' DRAINAGE EASEMENT
M.B. 65 - PG. 2

MATCH LINE - SEE SHEET 5
N 76°02'42" E



EX. 50' COLONIAL PIPELINE EASEMENT (D.B. 90 PG. 1)
COMMON AREA

MATCH LINE -
SEE SHEET 4

MATCH LINE
SEE SHEET 5

1:51 PM 19 day of May 1999
Recorded
DOCUMENT # 99-0210838
Gloria W. Rogers Clerk

COMMON AREA
BMP LAKE # 1
AREA = 38,052 SQ. FT. = 0.8735 AC.

EXHIBIT "A" PHASE 43
FAIRWAYS VILLAS
AT
GREEN SPRINGS, A CONDOMINIUM
FOR
GREEN SPRINGS DEVELOPMENT, L.C.
BERKELEY DISTRICT JAMES CITY COUNTY, VIRGINIA

PLAT RECORDED IN
P.B. NO. 73 PAGE 2-3

Hassell & Folkes, P.C. Engineers Surveyors Planners Chesapeake, VA 23320 (757) 547-9531	SIZE C	CONTRACT NO 95-079	DISK/BOX 66/16 REF: 18/13	FILENAME FAIRWAY43.DWG FWAYPLAT.DWG	REV.
SCALE: 1" = 50'	DATE: 03/15/99	SHEET 3 of 7			