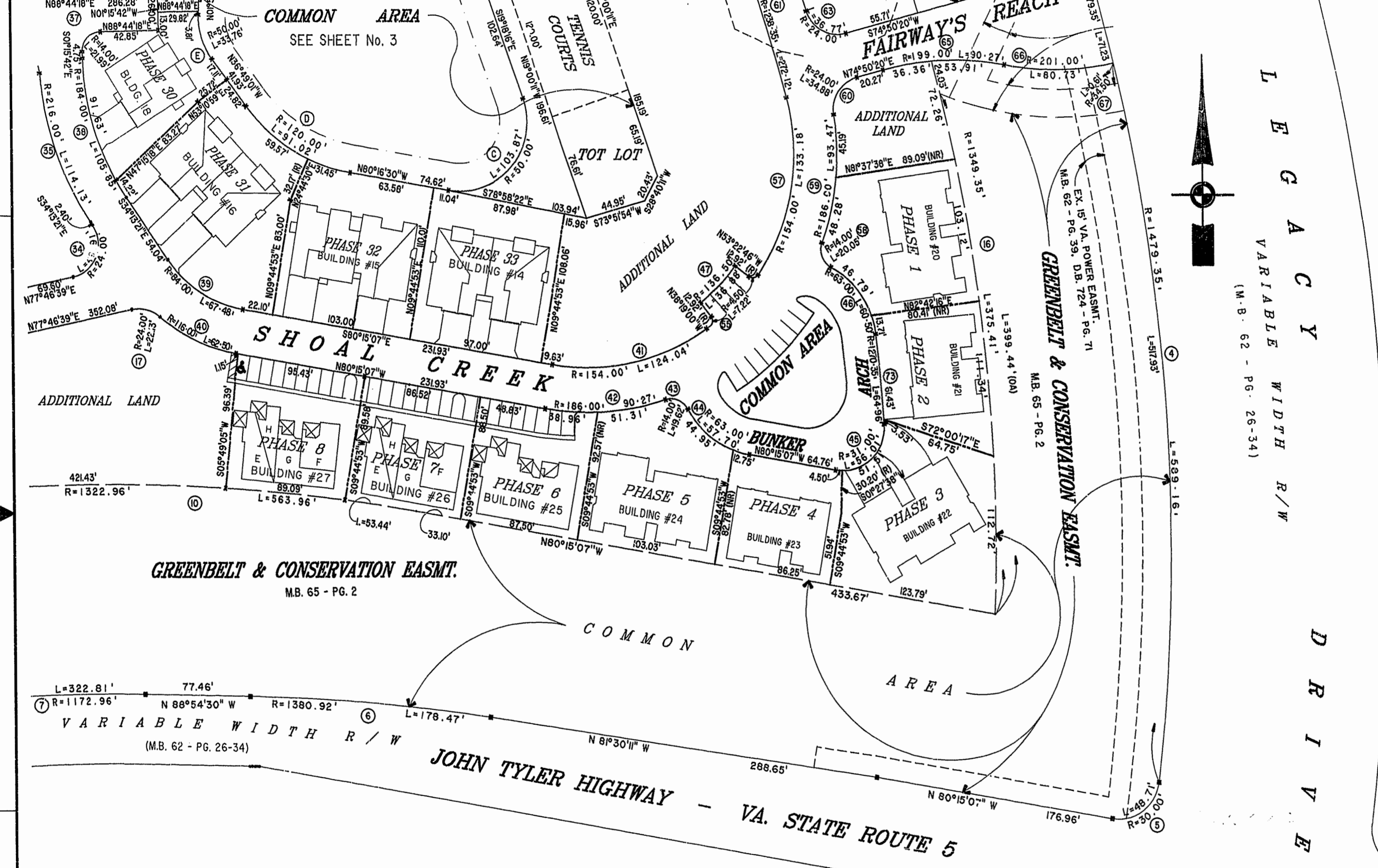
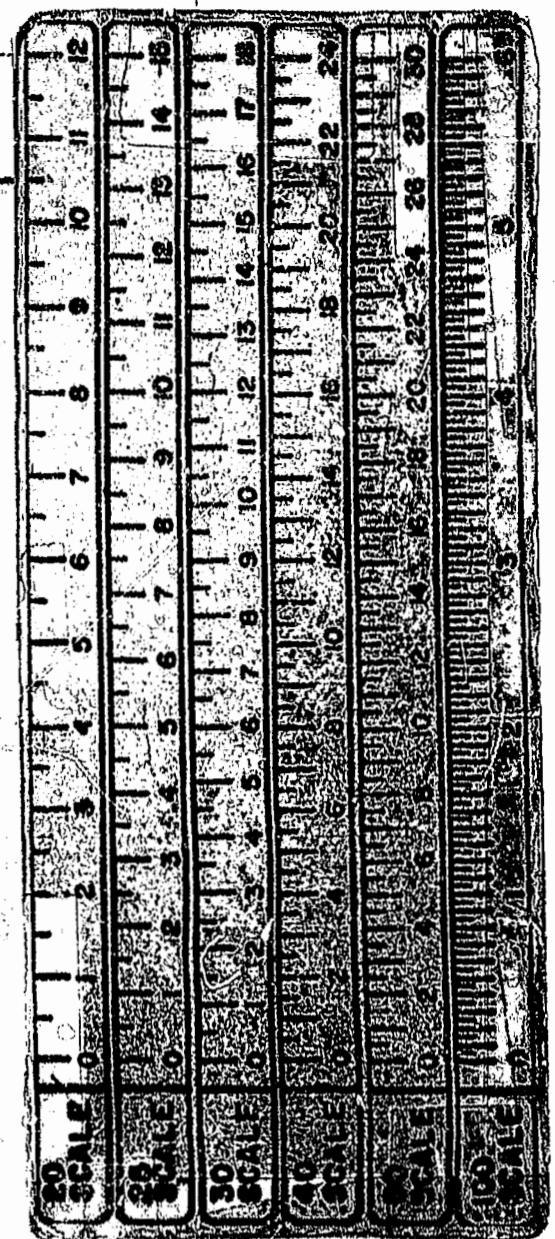


MATCH LINE SEE SHEET 4

MATCH LINE - SEE SHEET 3



LEGACY
 VARIABLE WIDTH R/W
 (M.B. 62 - PG. 26-34)



GREENBELT & CONSERVATION EASMT.
M.B. 65 - PG. 2

VARIABLE WIDTH R/W
M.B. 62 - PG. 26-34

JOHN TYLER HIGHWAY - VA. STATE ROUTE 5

**EXHIBIT "A" PHASE 43
FAIRWAYS VILLAS**
AT
GREEN SPRINGS, A CONDOMINIUM
FOR
GREEN SPRINGS DEVELOPMENT, L.C.
BERKELEY DISTRICT JAMES CITY COUNTY, VIRGINIA

Recorded 1:51 PM 19 day of 24th 1999
DOCUMENT # 99-011138
Clerk



PLAT RECORDED IN
P.D. NO. 23 PAGE 28-35

Hassell & Folkes, P.C. Engineers Surveyors Planners Chesapeake, VA. 23320 (757) 547-9531	SIZE CONTRACT NO C 95-079	DISK/BOX 66/16 REF: 18/13	FILENAME FAIRWAY43.DWG FWAYPLAT.DWG	REV
SCALE: 1" = 50'	DATE: 03/15/99	SHEET 2 of 7		