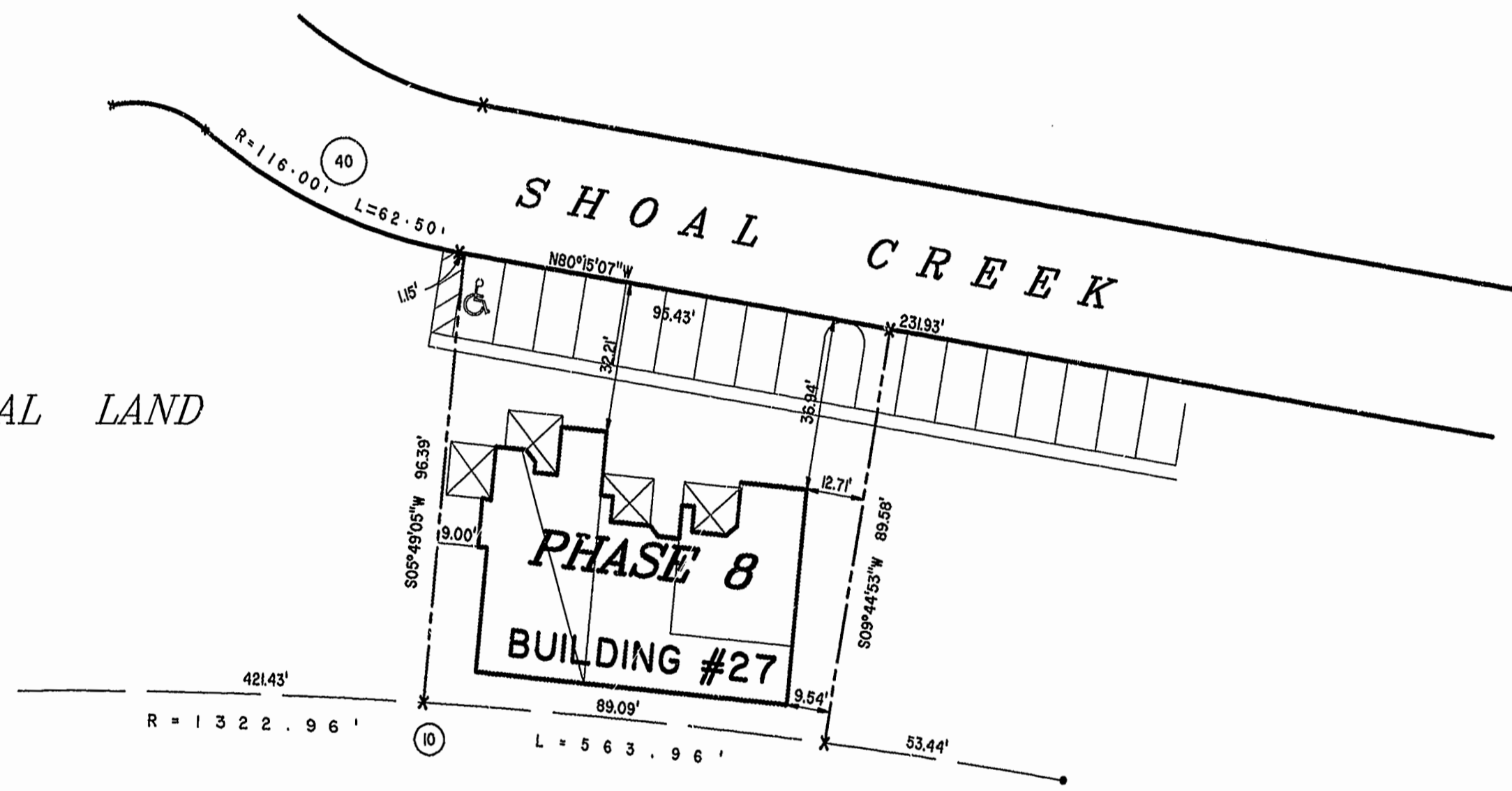
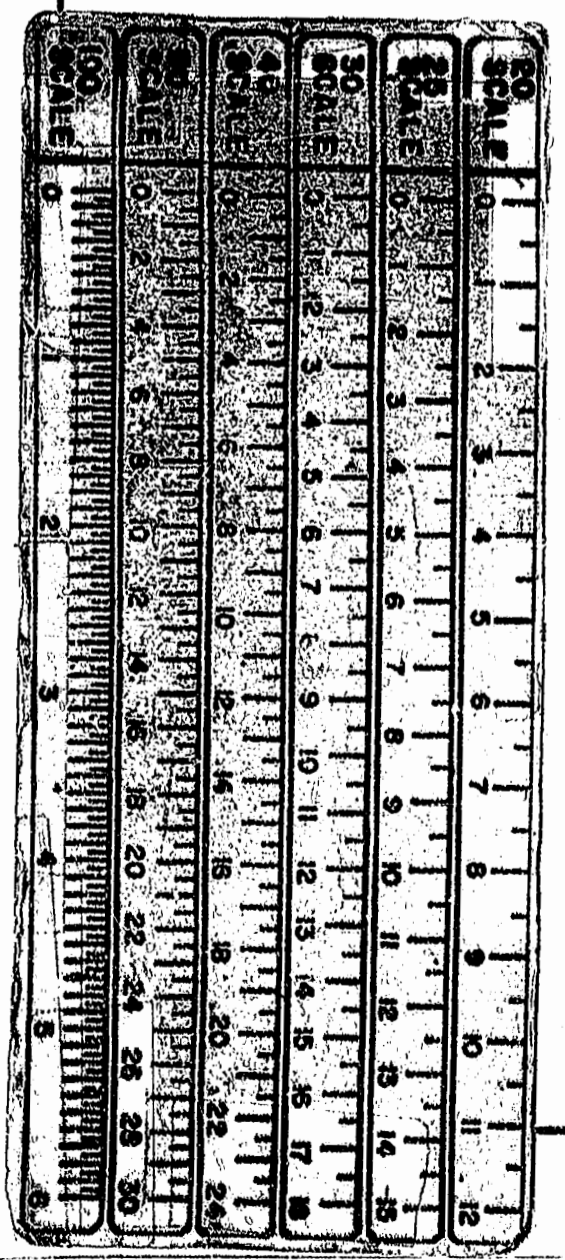
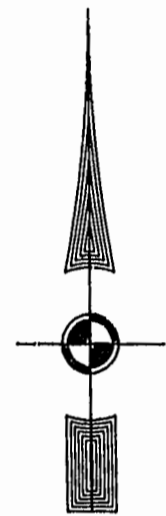


| BUILDING NUMBER | UNIT NUMBER | UNIT TYPE | STREET ADDRESS |
|-----------------|-------------|-----------|-----------------|
| 27 | 27-318 | F | 318 SHOAL CREEK |
| 27 | 27-320 | G | 320 SHOAL CREEK |
| 27 | 27-322 | H | 322 SHOAL CREEK |
| 27 | 27-324 | E | 324 SHOAL CREEK |
| | | | |



ADDITIONAL LAND

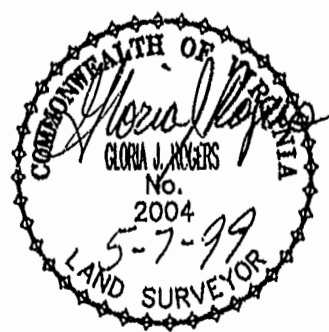


PHASE 8

AREA = 8,523 SQ. FT. = 0.196 AC.

1:29 PM
 Recorded 19 day of May 1999
 DOCUMENT # 99-20837
 Clerk

PLAT RECORDED IN
 P.B. NO. 73 PAGE 22-28



**EXHIBIT "A" PHASE 8
 FAIRWAYS VILLAS**
 AT
GREEN SPRINGS, A CONDOMINIUM
 FOR
GREEN SPRINGS DEVELOPMENT, L.C.
 BERKELEY DISTRICT JAMES CITY COUNTY, VIRGINIA

| | | | | |
|---|--------------------------------|-------------------------------|---------------------------------------|------|
| Hassell & Folkes, P.C. Engineers Surveyors Planners Chesapeake, VA. 23320 (757) 547-9531 | SIZE: C CONTRACT NO: 95-079 | DISK/BOX: 6F/16 REF: 18/13 | FILENAME: FAIRWY8.DWG FWAYPLAT.DWG | REV. |
| SCALE: 1" = 25' | DATE: 03/12/99 | SHEET 7 of 7 | | |