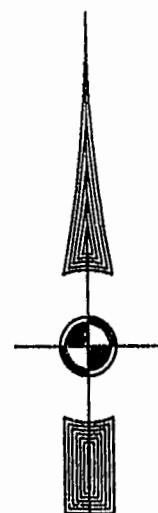
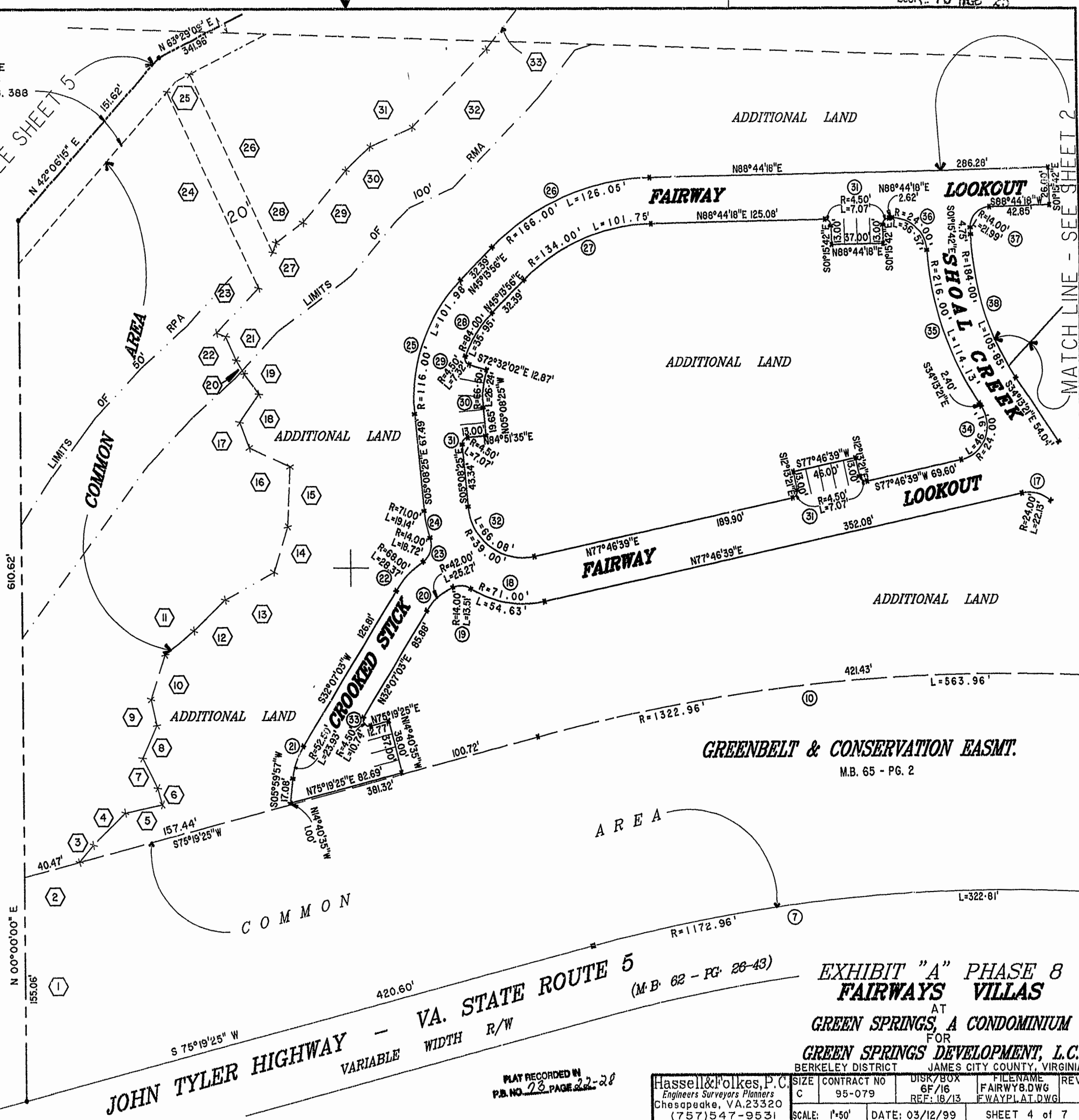


EXIST. 20' JAMES CITY COUNTY SERVICE AUTHORITY SAN. SEWER EASEMENT AS SHOWN IN AS-BUILT LOCATION, D.B. 141 - PG. 388

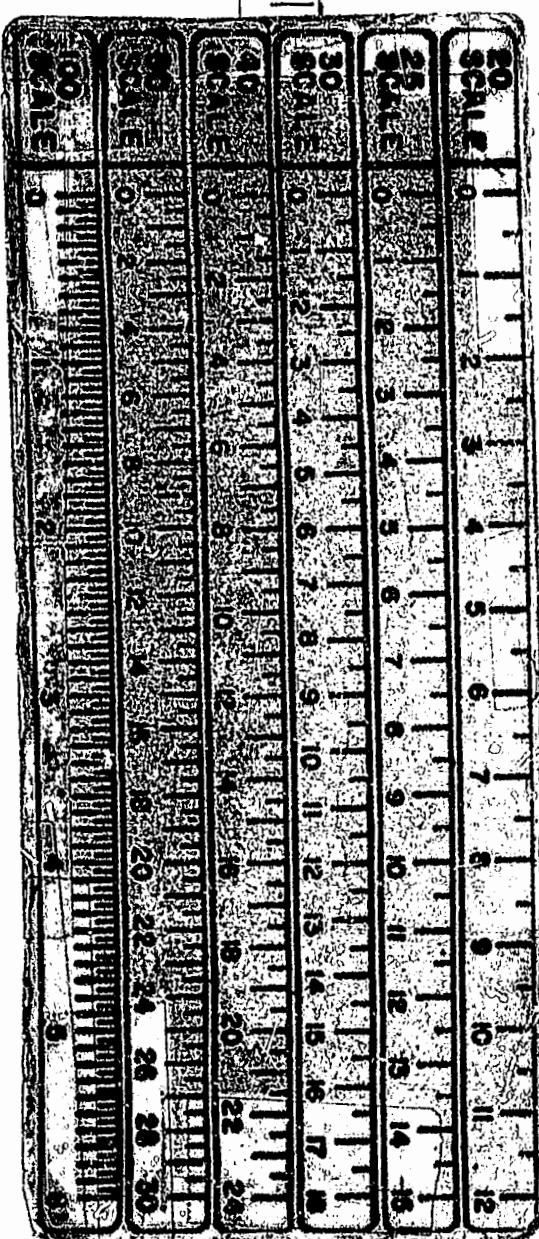


MATCH LINE - SEE SHEET 5

MATCH LINE - SEE SHEET 2



46-1-01-0-0001 "GREENSPRINGS PLANTATION" (DB 322, PG 254)



1:29 pm Recorded 19 day of Jan 1999 DOCUMENT # 990210827 Wilene S. Hand Clerk

JOHN TYLER HIGHWAY - VA. STATE ROUTE 5 VARIABLE WIDTH R/W

GREENBELT & CONSERVATION EASMT. M.B. 65 - PG. 2

EXHIBIT "A" PHASE 8 FAIRWAYS VILLAS AT GREEN SPRINGS, A CONDOMINIUM FOR GREEN SPRINGS DEVELOPMENT, L.C. BERKELEY DISTRICT JAMES CITY COUNTY, VIRGINIA

PLAT RECORDED IN P.B. NO. 23 PAGE 22-28

Hassell & Polkes, P.C. Engineers Surveyors Planners Chesapeake, VA. 23320 (757)547-9531	SIZE C	CONTRACT NO 95-079	DISK/BOX 6F/16	REF: 18/13	FILENAME FAIRWAY8.DWG	REV. FWAYPLAT.DWG
SCALE: 1"=50'		DATE: 03/12/99		SHEET 4 of 7		