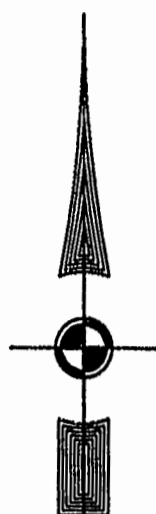


EXIST. 20' JAMES CITY COUNTY SERVICE AUTHORITY SAN. SEWER EASEMENT AS SHOWN IN AS-BUILT LOCATION. D.B. 141 - PG. 388



MATCH LINE - SEE SHEET 5

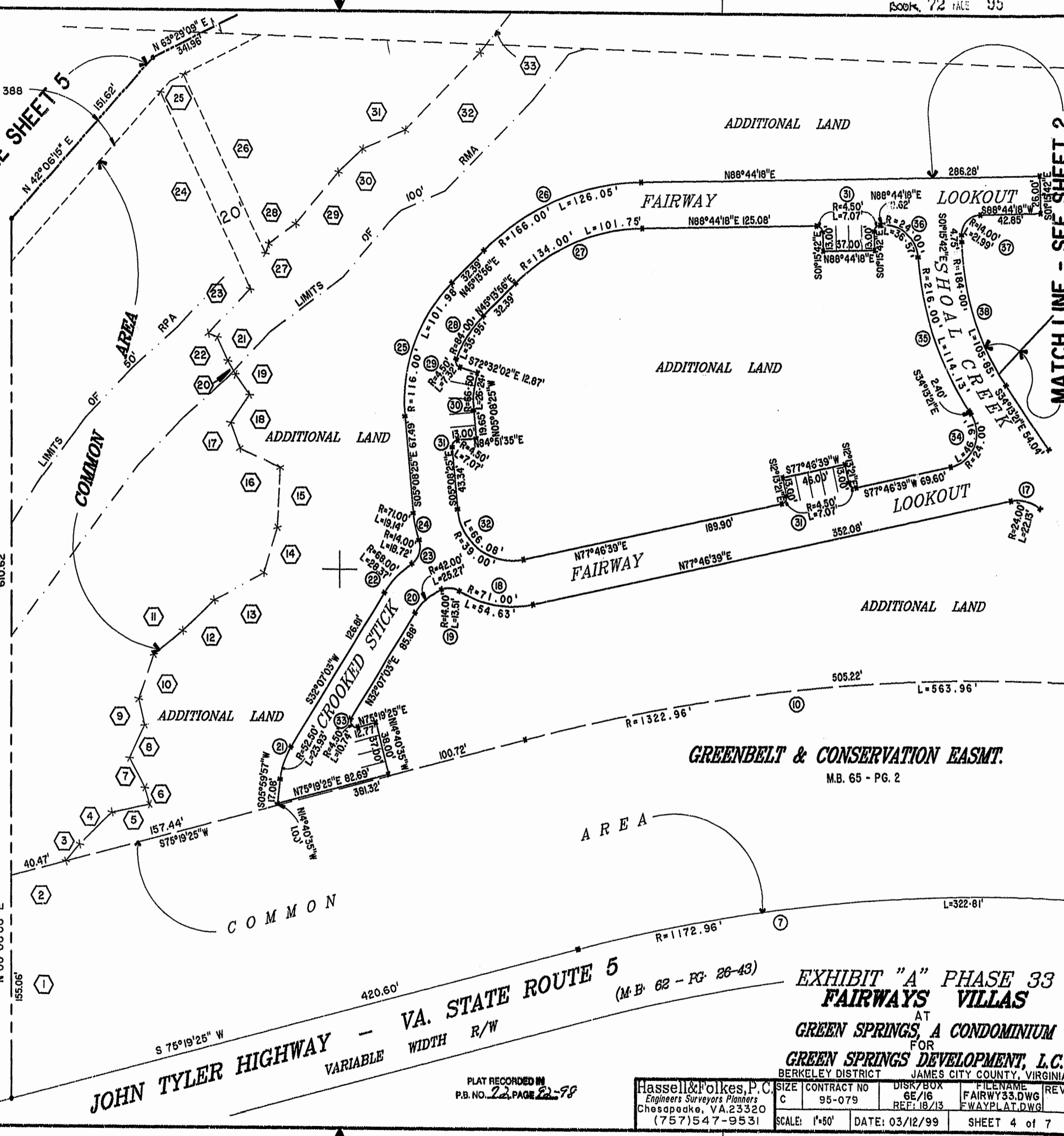
MATCH LINE - SEE SHEET 2

46-1-01-0-0001 "GREENSPRINGS PLANTATION" (DB 322, PG 254)



Recorded 12:14 PM day of April 1999 DOCUMENT # 99-000-8153

Walter S. ... Clerk



GREENBELT & CONSERVATION EASMT. M.B. 65 - PG. 2

VA. STATE ROUTE 5 (M.B. 62 - PG. 26-43) VARIABLE WIDTH R/W JOHN TYLER HIGHWAY

EXHIBIT "A" PHASE 33 FAIRWAYS VILLAS AT GREEN SPRINGS, A CONDOMINIUM FOR GREEN SPRINGS DEVELOPMENT, L.C. BERKELEY DISTRICT JAMES CITY COUNTY, VIRGINIA

PLAT RECORDED IN P.B. NO. 22 PAGE 22-98

Hassell & Folkes, P.C. Engineers Surveyors Planners Chesapeake, VA. 23320 (757)547-9531	SIZE CONTRACT NO C 95-079	DISK/BOX 6E/16 REF: 18/13	FILENAME FAIRWAY33.DWG FWAYPLAT.DWG	REV.
SCALE: 1"=50'	DATE: 03/12/99	SHEET 4 of 7		

