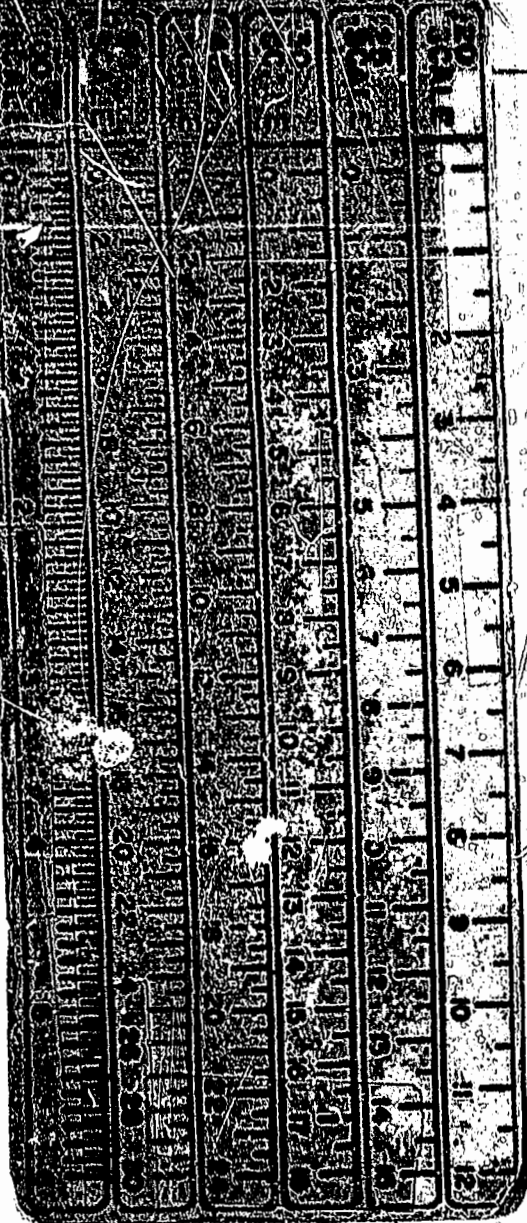
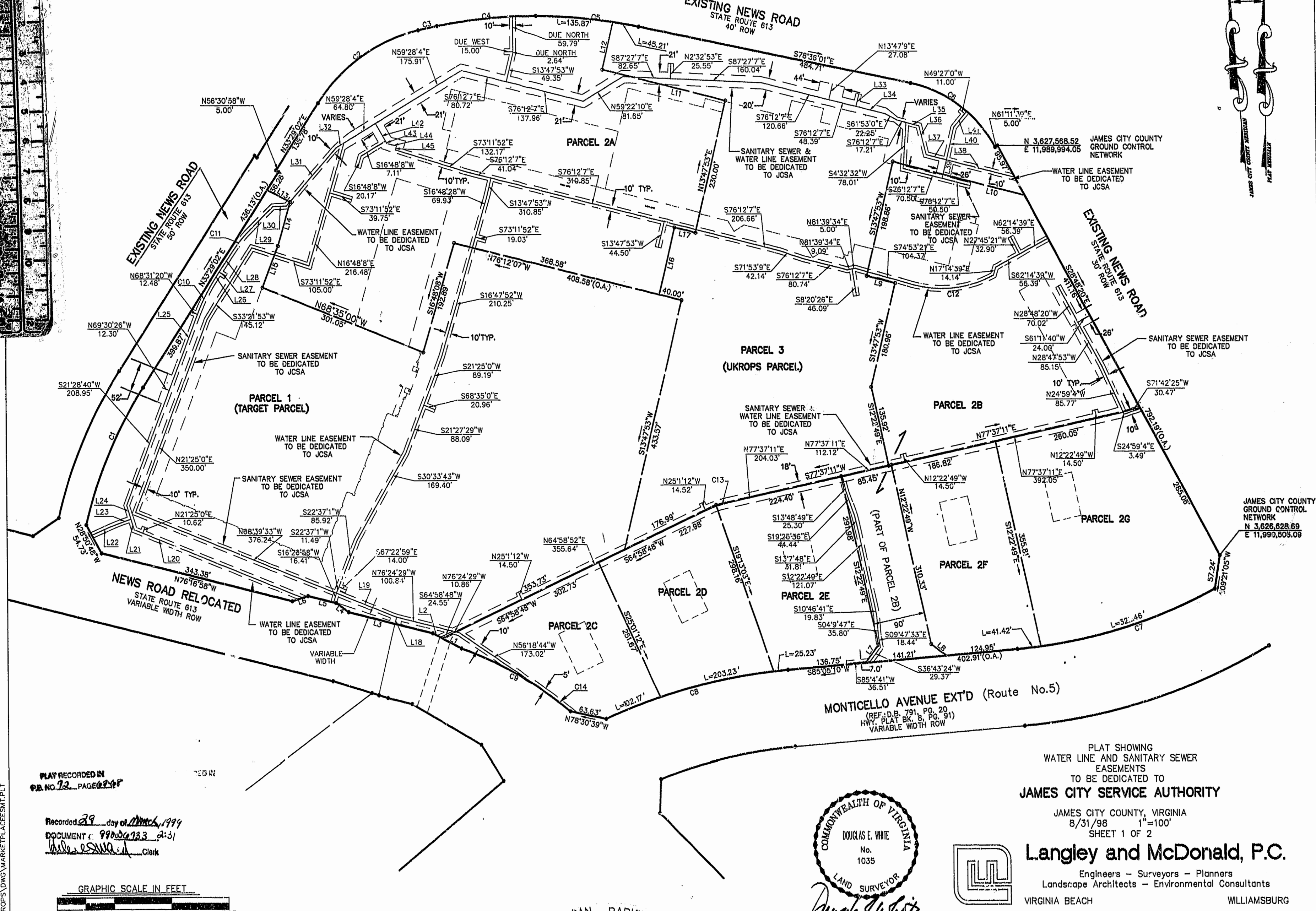
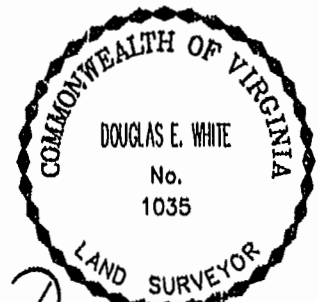
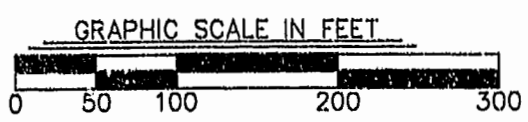


NOTE: ALL COURSE BEARINGS ON THIS PLAT ARE REFERENCED TO THE "PLAT MERIDIAN" NORTH ARROW. ROTATIONAL RELATIONSHIP OF "PLAT MERIDIAN" TO "JAMES CITY COUNTY MERIDIAN" IS FOR INFORMATIONAL PURPOSES ONLY.

Book 72 PAGE 67



PLAT RECORDED IN
 P.B. NO. 72 PAGE 67
 Recorded 29 day of March 1999
 DOCUMENT # 99000933 2:31
 [Signature] Clerk



Douglas E. White



PLAT SHOWING
 WATER LINE AND SANITARY SEWER
 EASEMENTS
 TO BE DEDICATED TO
JAMES CITY SERVICE AUTHORITY
 JAMES CITY COUNTY, VIRGINIA
 8/31/98 1"=100'
 SHEET 1 OF 2
Langley and McDonald, P.C.
 Engineers - Surveyors - Planners
 Landscape Architects - Environmental Consultants
 VIRGINIA BEACH WILLIAMSBURG