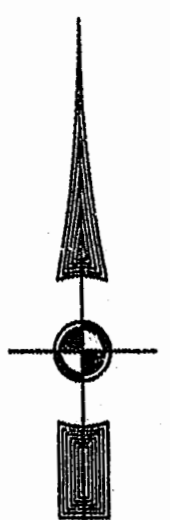


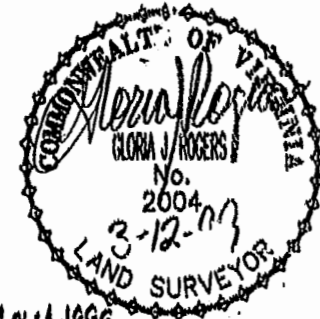
EXIST. 20' JAMES CITY COUNTY SERVICE AUTHORITY SAN. SEWER EASEMENT AS SHOWN IN AS-BUILT LOCATION. D.B. 141 - PG. 388



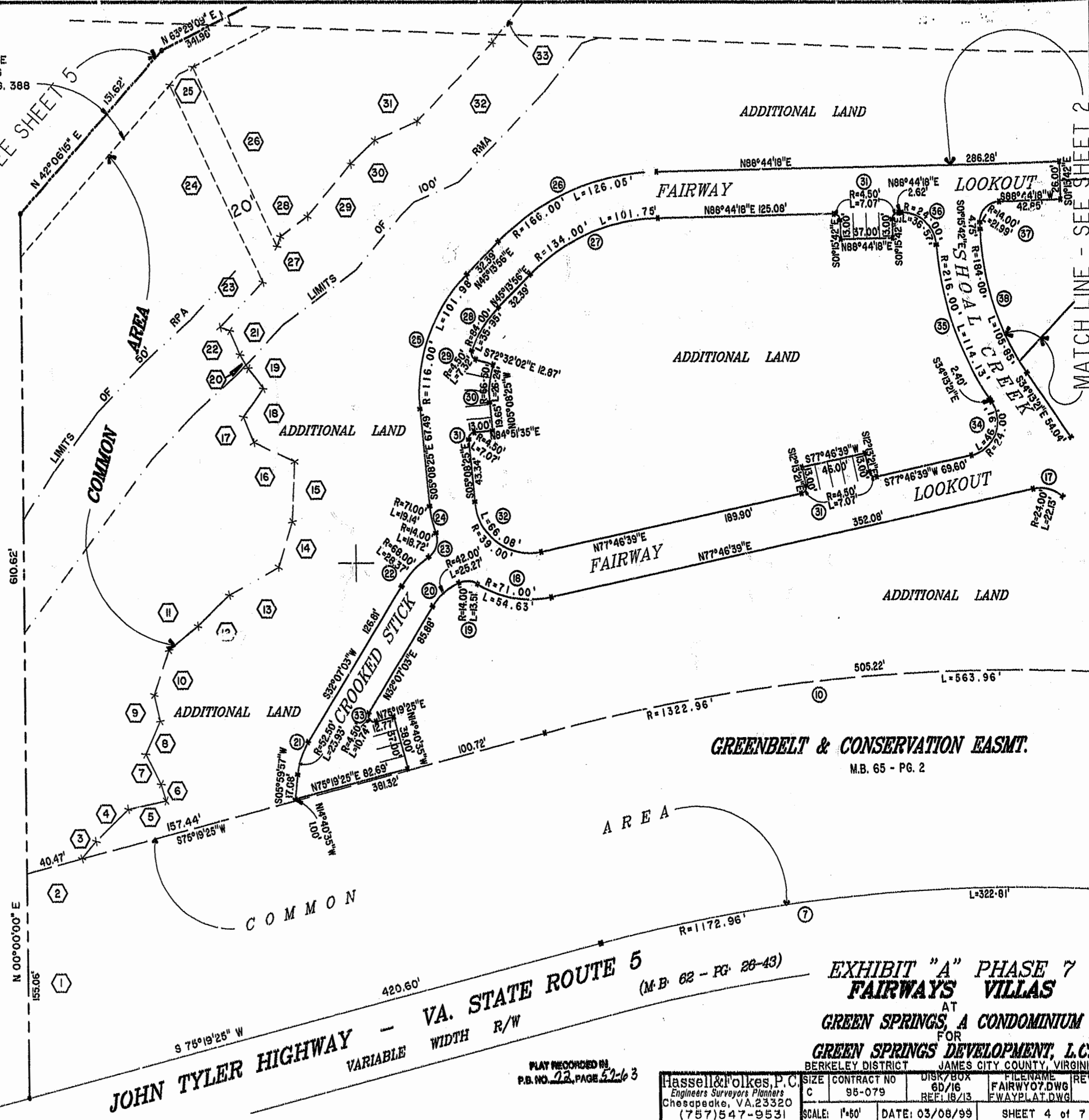
MATCH LINE - SEE SHEET 5

MATCH LINE - SEE SHEET 2

46-1-01-0-0001  
"GREENSPRINGS PLANTATION"  
(DB 322, PG 254)



1:25pm  
Recorded 24 day of March 1999  
DOCUMENT # 99 002 63 64  
Kelsey Sillars, Clerk



JOHN TYLER HIGHWAY - VA. STATE ROUTE 5  
VARIABLE WIDTH R/W (M.B. 62 - PG. 28-43)

GREENBELT & CONSERVATION EASMT.  
M.B. 65 - PG. 2

EXHIBIT "A" PHASE 7  
FAIRWAYS VILLAS  
AT  
GREEN SPRINGS, A CONDOMINIUM  
FOR  
GREEN SPRINGS DEVELOPMENT, L.C.  
BERKELEY DISTRICT JAMES CITY COUNTY, VIRGINIA

Hassell & Folkes, P.C. Engineers Surveyors Planners Chesapeake, VA. 23320 (757) 547-9531	SIZE	CONTRACT NO	DISK/BOX	FILENAME	REV.
	C	95-079	6D/16 REF. 18/13	FAIRWAY07.DWG FWAYPLAT.DWG	
SCALE: 1"=60'		DATE: 03/08/99	SHEET 4 of 7		

PLAT RECORDED IN  
P.B. NO. 22, PAGE 52-63