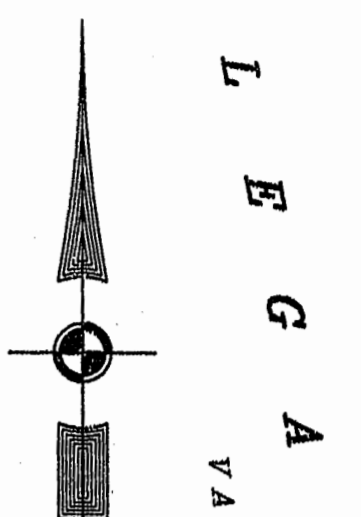
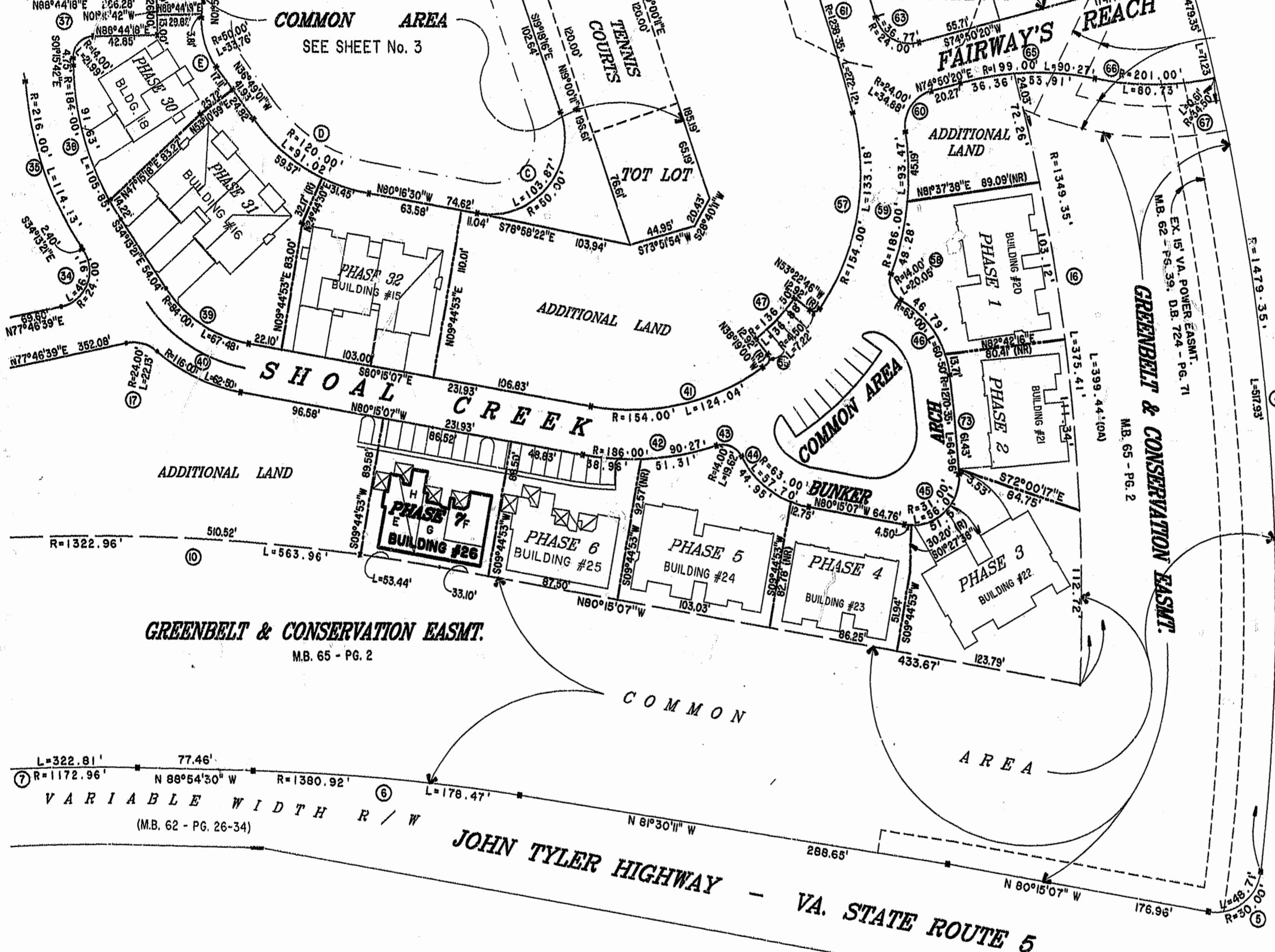


MATCH LINE SEE SHEET 4

MATCH LINE - SEE SHEET 3



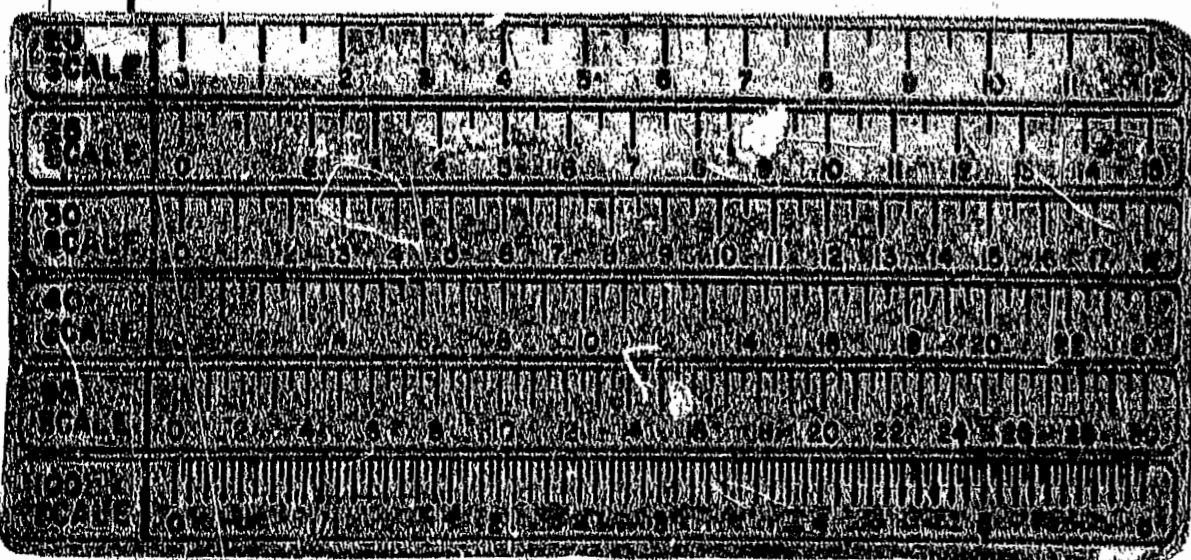
LEGAL VARIABLE WIDTH R/W
 (M.B. 62 - PG. 26-34)

DRIVE

GREENBELT & CONSERVATION EASMT.
M.B. 65 - PG. 2

VARIABLE WIDTH R/W
(M.B. 62 - PG. 26-34)

JOHN TYLER HIGHWAY - VA. STATE ROUTE 5



1:25 PM
 Recorded 24 day of March 1999
 DOCUMENT # 990026364
 Belinda S. ... Clerk

PLAY RECORDED IN
 P.B. NO. 22, PAGE 57-63



Hassell & Polkes, P.C.
 Engineers Surveyors Planners
 Chesapeake, VA 23320
 (757) 547-9631

**EXHIBIT "A" PHASE 7
 FAIRWAYS VILLAS**
 AT
GREEN SPRINGS, A CONDOMINIUM
 FOR
GREEN SPRINGS DEVELOPMENT, L.C.
 BERKELEY DISTRICT JAMES CITY COUNTY, VIRGINIA

SIZE	CONTRACT NO	DISK/BOX	FILENAME	REV.
C	95-079	80/16	FAIRWY07.DWG	
SCALE: 1" = 60'			DATE: 03/08/99	SHEET 2 of 7