

EXIST. 20' JAMES CITY COUNTY SERVICE AUTHORITY SAN. SEWER EASEMENT AS SHOWN IN AS-BUILT LOCATION. D.B. 141 - PG. 388



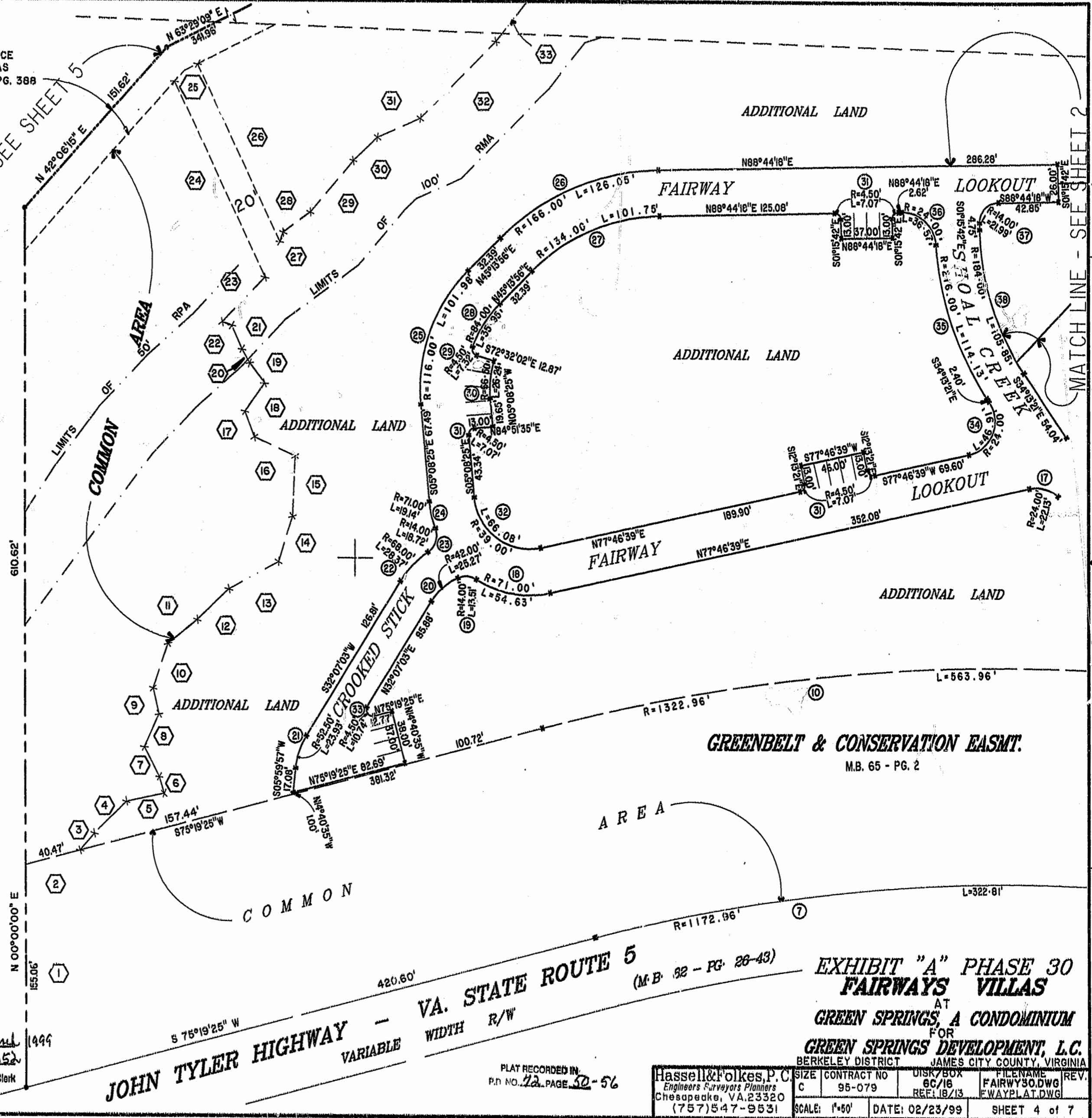
MATCH LINE - SEE SHEET 5

MATCH LINE - SEE SHEET 2

46-1-01-0-0001
"GREENSPRINGS PLANTATION"
(DB 322, PG 254)



1:15 PM
Recorded 24 day of March 1999
DOCUMENT # 99 002 6352
Helen S. [Signature] Clerk



VA. STATE ROUTE 5
WIDTH R/W
JOHN TYLER HIGHWAY - VARIABLE WIDTH R/W

GREENBELT & CONSERVATION EASMT.
M.B. 65 - PG. 2

EXHIBIT "A" PHASE 30
FAIRWAYS VILLAS
AT
GREEN SPRINGS, A CONDOMINIUM
FOR
GREEN SPRINGS DEVELOPMENT, L.C.
BERKELEY DISTRICT JAMES CITY COUNTY, VIRGINIA

PLAT RECORDED IN
P.D. NO. 72, PAGE 52-56

Hassell & Folkes, P.C.
Engineers Surveyors Planners
Chesapeake, VA, 23320
(757) 547-9531

SIZE	CONTRACT NO	DISK/BOX	FILENAME	REV.
C	95-079	6C/16	FAIRWY30.DWG	
SCALE: 1"=60'	DATE: 02/23/99	REF: 18/13	FWAYPLAT.DWG	
			SHEET 4 of 7	