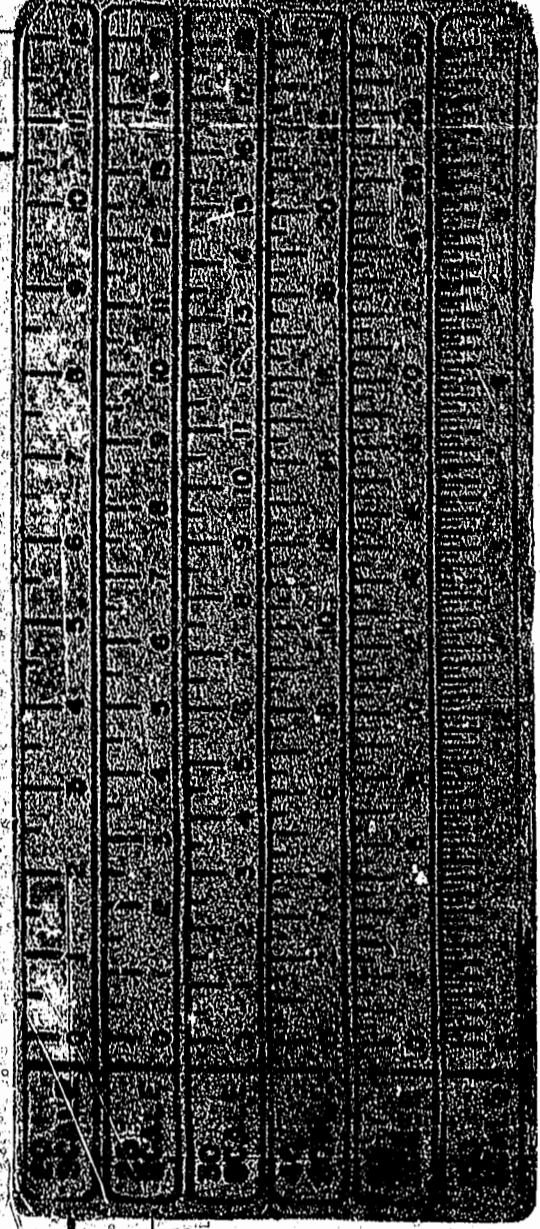
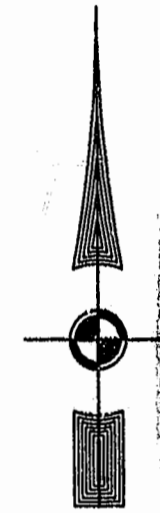
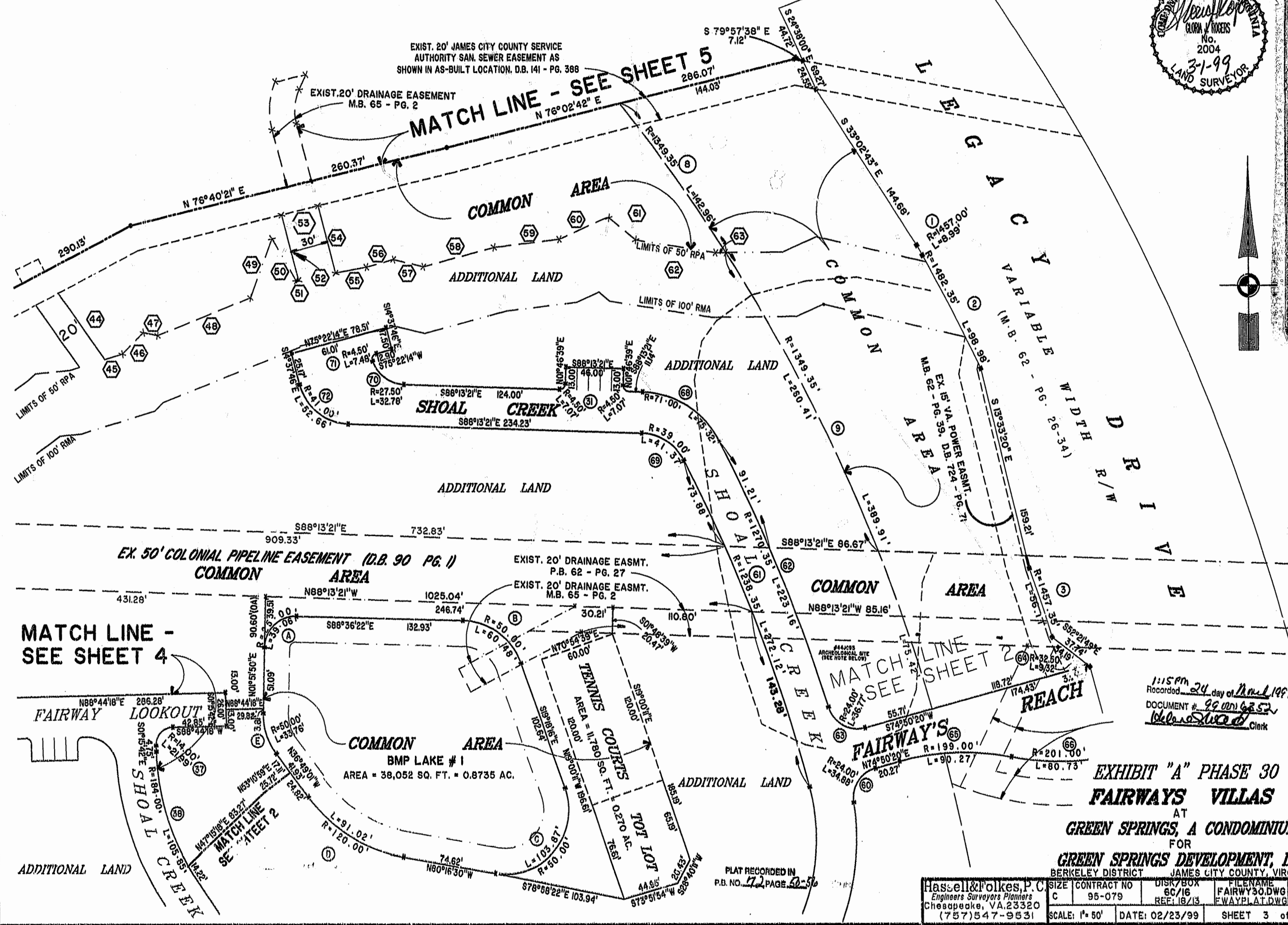


46-1-01-0-0001
"GREENSPRINGS PLANTATION"
(DB 322, PG 254)

EXIST. 20' JAMES CITY COUNTY SERVICE
AUTHORITY SAN. SEWER EASEMENT AS
SHOWN IN AS-BUILT LOCATION, D.B. 141 - PG. 388

EXIST. 20' DRAINAGE EASEMENT
M.B. 65 - PG. 2

MATCH LINE - SEE SHEET 5



**MATCH LINE -
SEE SHEET 4**

**MATCH LINE -
SEE SHEET 2**

1:15 PM
Recorded 24 day of April 1999
DOCUMENT # 99 001 6252
Delores Wood Clerk

**EXHIBIT "A" PHASE 30
FAIRWAYS VILLAS
AT
GREEN SPRINGS, A CONDOMINIUM
FOR
GREEN SPRINGS DEVELOPMENT, L.C.**

PLAT RECORDED IN
P.B. NO. 72 PAGE 52

Hassell & Folkes, P.C. Engineers Surveyors Planners Chesapeake, VA 23320 (757) 547-9631	SIZE	CONTRACT NO	DISK/BOX	FILENAME	REV.
	C	95-079	6C/16	FAIRWAY30.DWG	
	SCALE: 1" = 60'	DATE: 02/23/99	REF: 16/13	FWAYPLAT.DWG	
					SHEET 3 of 7