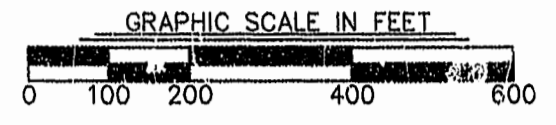
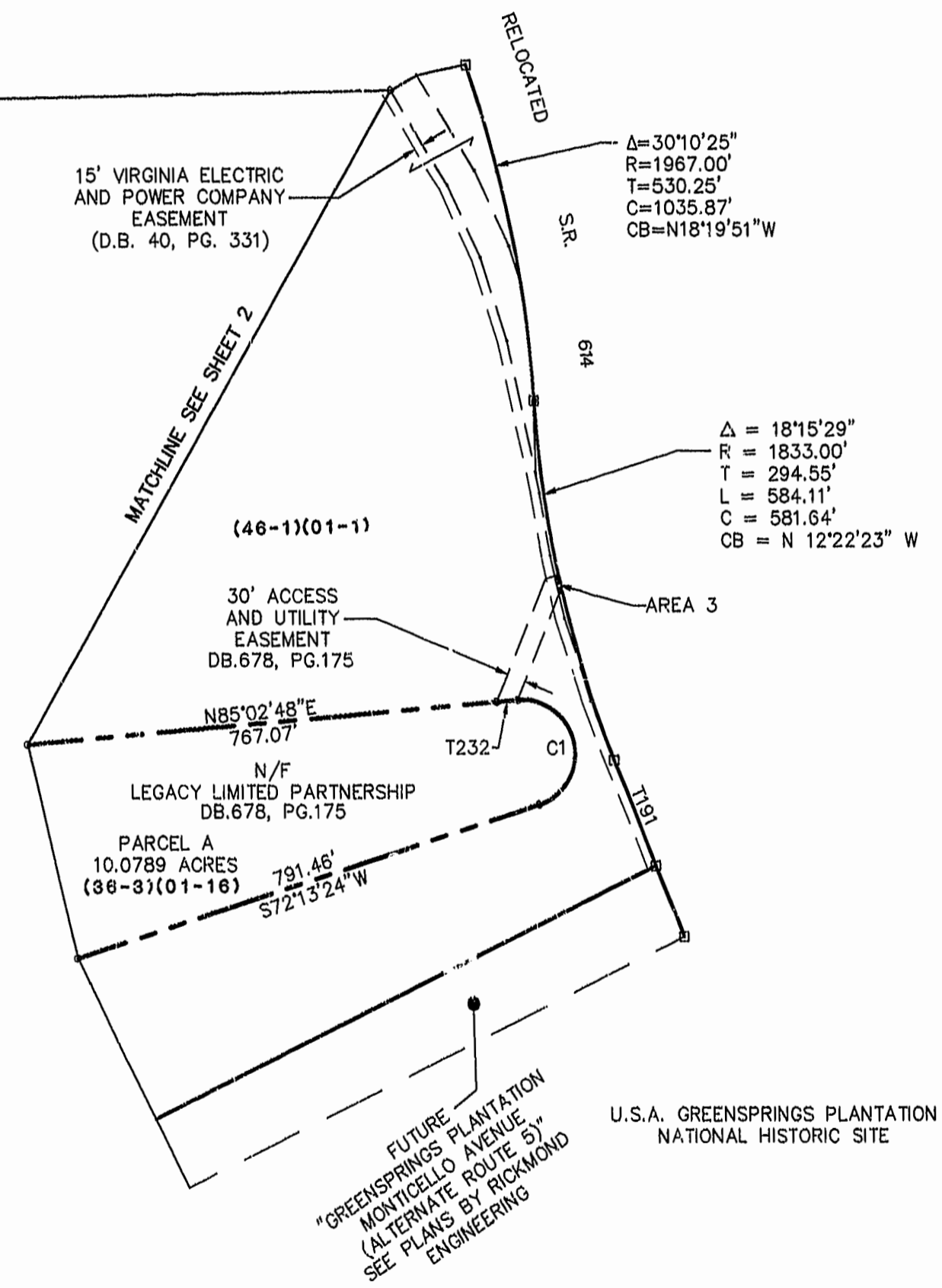


BOUNDARY LINE ADJUSTMENT  
LEGACY (GREENSPRINGS) LIMITED PARTNERSHIP,  
A VIRGINIA LIMITED PARTNERSHIP  
AT GREENSPRINGS  
BEING A  
SUBDIVISION OF PROPERTY OF  
GREENSPRINGS PLANTATION, INC.  
BERKELEY DISTRICT  
JAMES CITY COUNTY, VIRGINIA  
DATE: 3/8/99 SCALE: 1"=200'  
SHEET 3 OF 4

**Langley and McDonald, P.C.**  
Engineers Surveyors Planners  
Landscape Architects Environmental Consultants  
VIRGINIA BEACH WILLIAMSBURG



MATCHLINE SEE SHEET 1



$\Delta = 30^{\circ}10'25''$   
 $R = 1967.00'$   
 $T = 530.25'$   
 $C = 1035.87'$   
 $CB = N18^{\circ}19'51''W$

$\Delta = 18^{\circ}15'29''$   
 $R = 1833.00'$   
 $T = 294.55'$   
 $L = 584.11'$   
 $C = 581.64'$   
 $CB = N 12^{\circ}22'23'' W$

U.S.A. GREENSPRINGS PLANTATION  
NATIONAL HISTORIC SITE

FUTURE  
GREENSPRINGS PLANTATION  
"MONTICELLO AVENUE"  
(ALTERNATE ROUTE 5)  
SEE PLANS BY RICHMOND  
ENGINEERING

AREA 3 TO BE GRANTED  
AS A PERMANENT ACCESS  
EASEMENT TO LEGACY  
LIMITED PARTNERSHIP  
UPON ABANDONMENT OF  
OLD CENTERVILLE ROAD  
RIGHT-OF-WAY

8:58 AM  
Recorded 15 day of March 1999  
DOCUMENT # 99-001535  
*Blaise M. ...*

CLAY RECORDING  
P.O. NO. 72 PAGE 29-30

